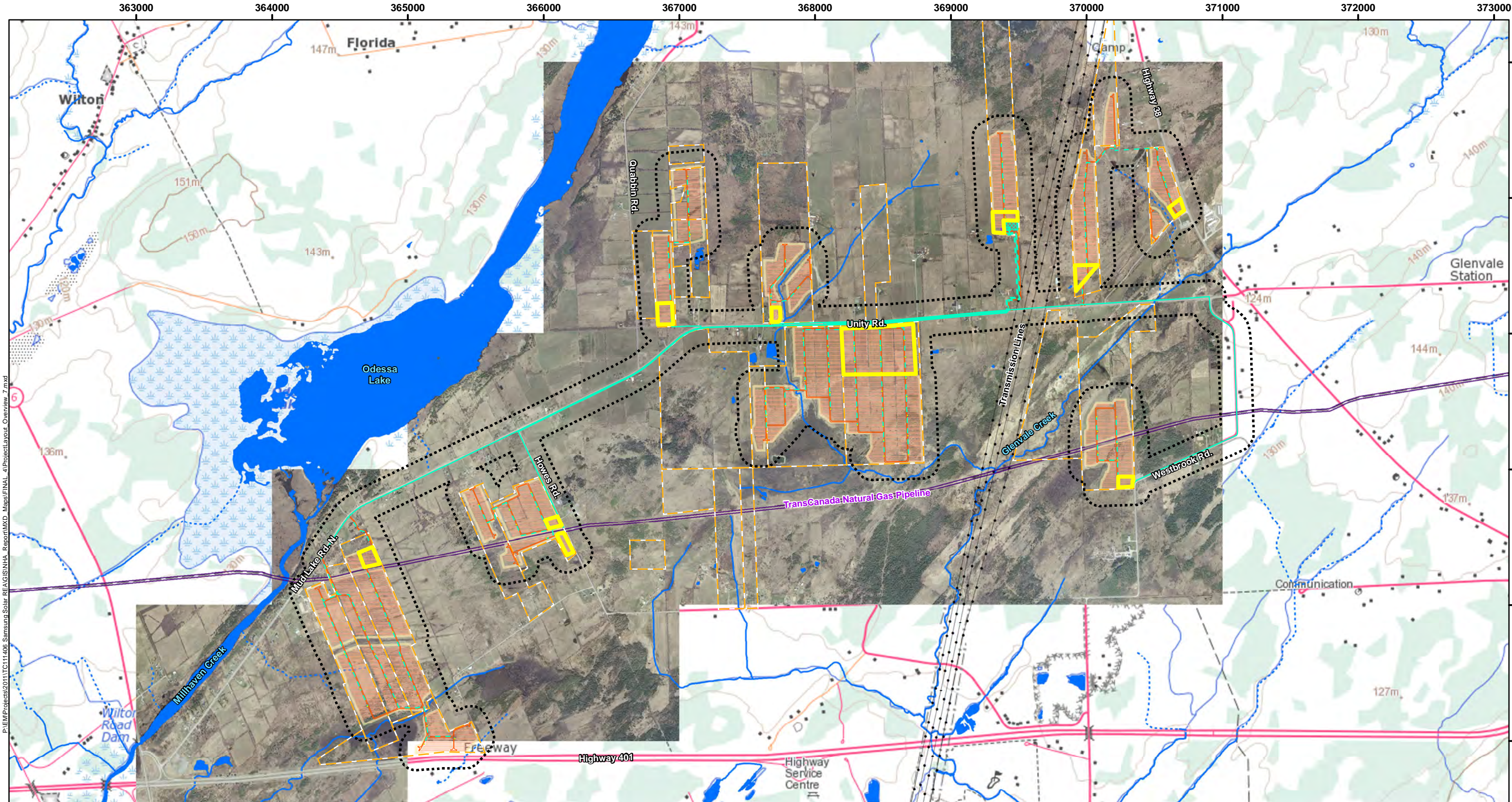


APPENDIX A:

Original and Revised Site Plans



LEGEND

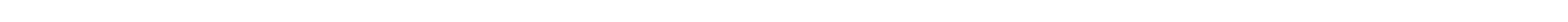
Layout Features	Substation Location
Property Area that is Potentially Eligible for Development	Operations and Maintenance Building
Development Area (Solar Panels)	Laydown Area
Inverter Station	Project Location, 120 m Setback Investigation Area *
Collector Line (Overhead)	
Collector Line (Underground)	
Access Road	

Other Features	TransCanada Natural Gas Pipeline ROW (Approx.)
	Transmission Lines
	Waterbody (LIO-MNR)
	Watercourse/Waterbody (LIO-MNR)
	Intermittent (CRCA-warm water stream)
	Permanent (CRCA-warm water stream)

NOTES:
 - Background topographic DRG map extracted from Geogratis.ca, 1:50k NTS, Natural Resources Canada
 - Watercourse and Waterbody data extracted from Land Information Ontario, Ministry of Natural Resources, 2011
 - Watercourse classification provided by Cataraqui Region Conservation Authority (CRCA) watercourse data, 2011
 * Investigation area includes the 120m buffer from the proposed fence line for development sites, overhead and underground collector lines and access roads (Site Plan April 20, 2012)

Datum: NAD83
 Projection: UTM Zone 18N

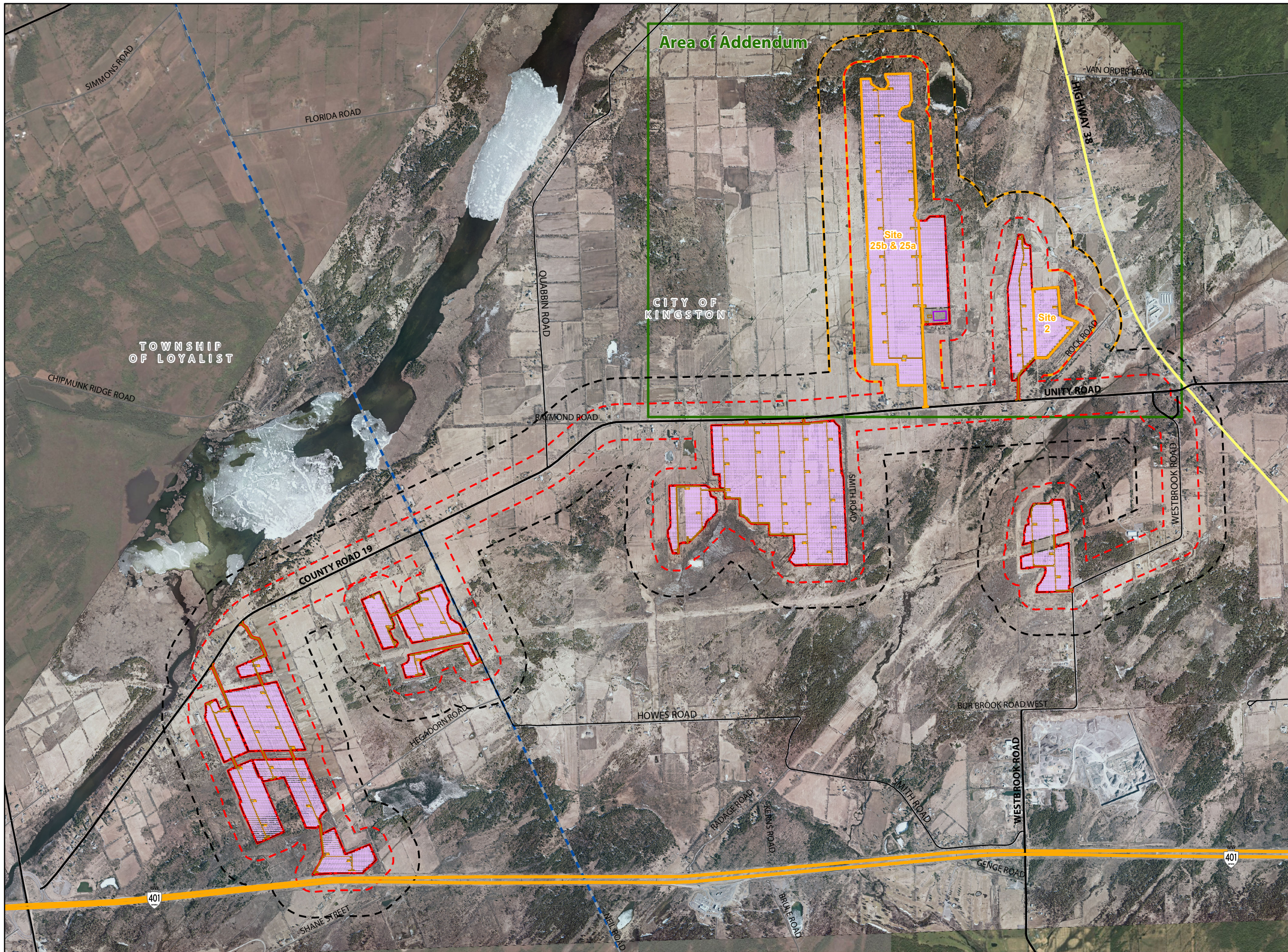
KINGSTON SOLAR LP		
SOL-LUCE KINGSTON SOLAR PV ENERGY PROJECT		
Project Location		
PROJECT N ^o : TC121402	FIGURE: 1-2	
SCALE: 1:27,000	DATE: September 2012	



P:\EM\Projects\2011\TC111406_SamsungSolar\REA\GIS\NHA_Report\MXD_Maps\FINAL_4\ProjectLayout_Overview_7.mxd

Sol-luce Kingston Solar PV Energy Project

**Figure 2
Project Location**



Legend

- Freeway
- Expressway / Highway
- Arterial Road
- Collector Road
- Local Road
- Project Location
- Amended Project Location
- 120 m Project Location Setback
- 300 m Project Location Setback
- 120 m Amended Project Location Setback
- 300 m Amended Project Location Setback
- Municipal Boundary

Project Components

- Solar Panels
- Inverters
- Access Road
- Fence
- Substation

