



# KINGSTON SOLAR LP

Sol-Luce Project Overview

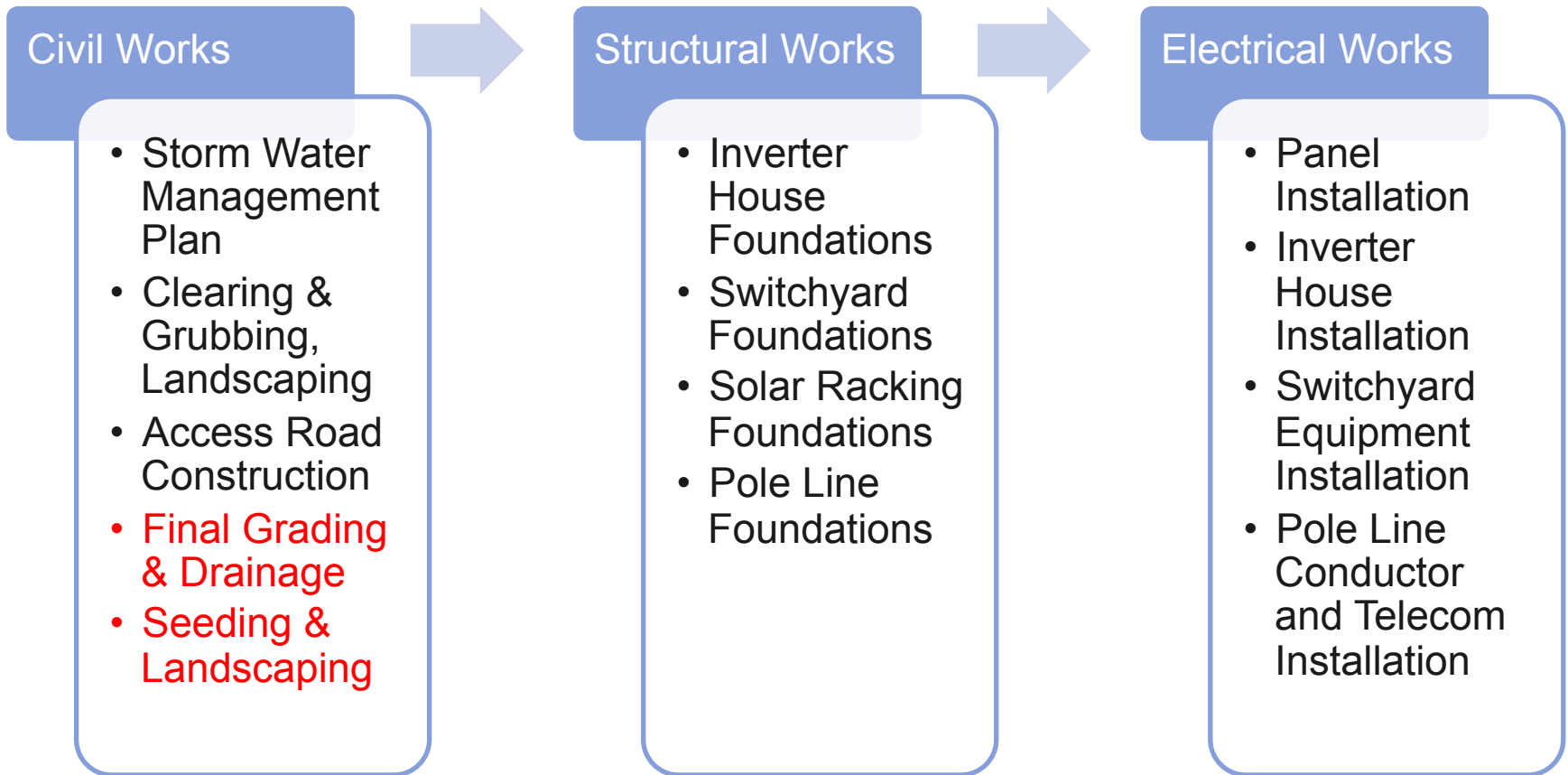
*May 27, 2015*

**KINGSTON**  
**SOLAR LP**

# TABLE OF CONTENTS

- Project Update
- Overview of the Project Schedule
- Work Completed to Date
- Remaining Construction Plans
- Mitigating Road Conditions
- Update re Berm Construction and Landscaping
- Questions / Clarifications
- Contact Info

# CONSTRUCTION WELL UNDERWAY

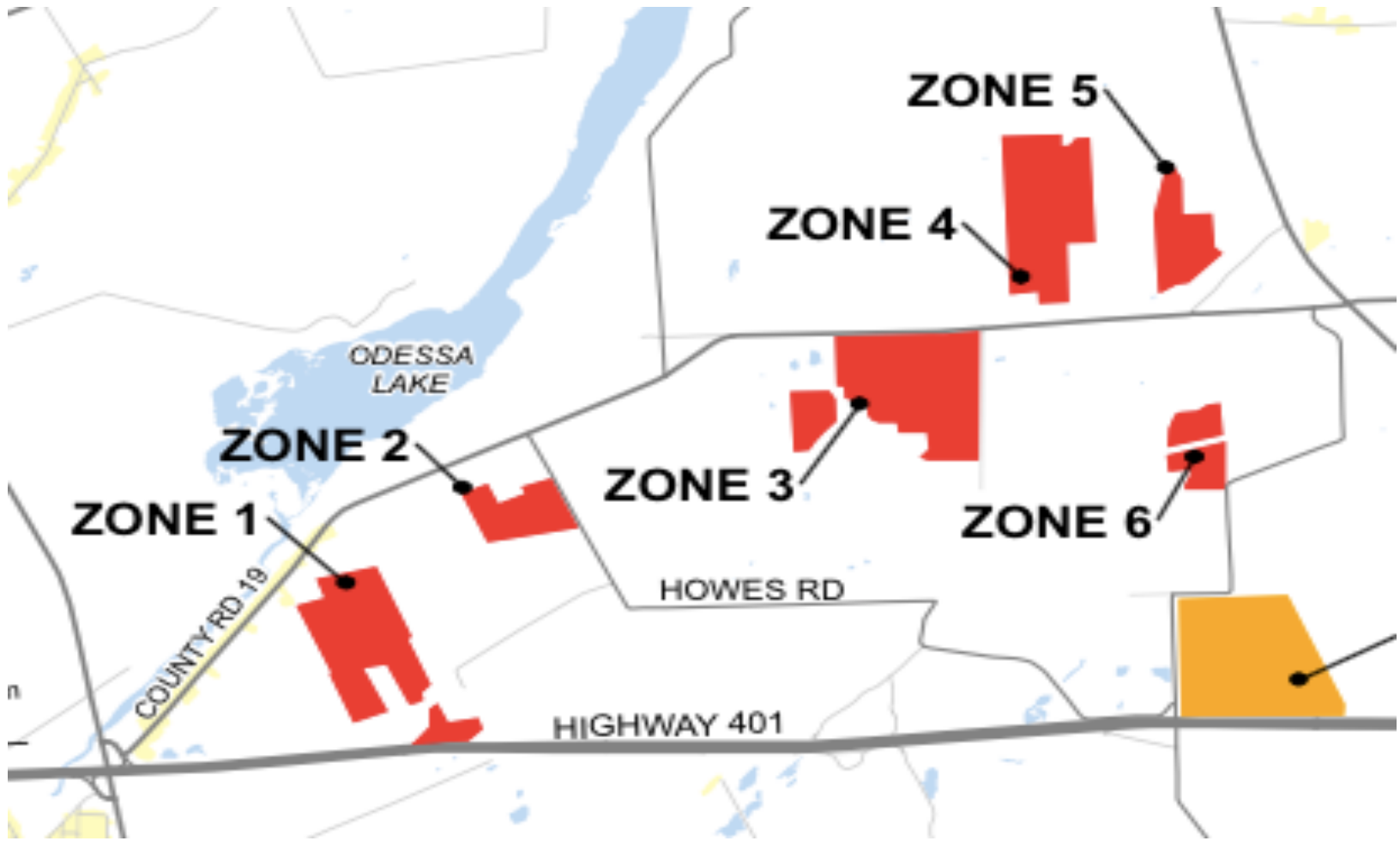


All activities underway except those shown in red

## OVERVIEW OF THE PROJECT SCHEDULE

Milestone	Date	Achieved
Full Notice to Proceed	Sept. 2, 2014	Yes
Civil Engineering Package	Nov. 25, 2014	Yes
Electrical Engineering Package	Dec. 15, 2014	Yes
Site Grading	Jan. 16, 2015	Yes
Foundations Complete	July 2015	Not yet
Racking Complete	July 2015	Not yet
Module Installation Complete	August 2015	Not yet
Acceptance Testing Starts	September 2015	Not yet
Substantial Project Completion	September 2015	Not yet
Final Project Completion	November 2015	Not yet

# PROJECT DIVIDED INTO 6 ZONES



## CONSTRUCTION STATUS (AS OF MAY 22<sup>nd</sup>)

Zone	1	2	3	4	5	6	Total
Piles installed	90%	98%	85%	91%	94%	56%	<b>88%</b>
A-Frames	38%	91%	85%	91%	41%	0%	<b>69%</b>
Rack complete	20%	91%	83%	84%	25%	0%	<b>60%</b>
DC trenches	2%	98%	96%	91%	94%	9%	<b>72%</b>
DC cables	0%	92%	74%	91%	71%	0%	<b>60%</b>
Panels installed	5%	78%	71%	68%	3%	0%	<b>46%</b>
Panels wired	5%	78%	71%	68%	3%	0%	<b>46%</b>

Total contractor manpower onsite = 759 people  
 + 10 for Canadian Solar + 8 for Kingston Solar  
 = 777 total workforce on May 22<sup>nd</sup>

## COMMENTS ON PROJECT STATUS

- Majority of heavy civil construction already complete
- Approximately 85% of deliveries to site complete
- Some berm construction remains
- Site manpower at peak; will decrease over time
- Drilling operations to be completed in July
- Road work ongoing and to be completed in June
- Project final completion expected to be on time in Q4
- Long-term O&M staff of 6-9 people plus subcontractors

## ZONE 1 PILES





## ZONE 3 OVERVIEW



## ZONE 3 ARRAYS



# MV STATION



# TRANSFORMER FOUNDATION



## BARN SWALLOW STRUCTURE



## ACTIVE MITIGATION OF ROAD CONDITIONS

- Complying with Road Use Agreements and Traffic Management Plan with respect to safety and road maintenance
- Kingston Solar continues to work closely with City of Kingston and Loyalist Township concerning road maintenance
- Focus on increased sweeping and watering
- Temporary fix on Unity Road near entrance to Hydro One power corridor, with remediation planned when work is complete

# STRICT ADHERENCE TO ROAD SAFETY RULES

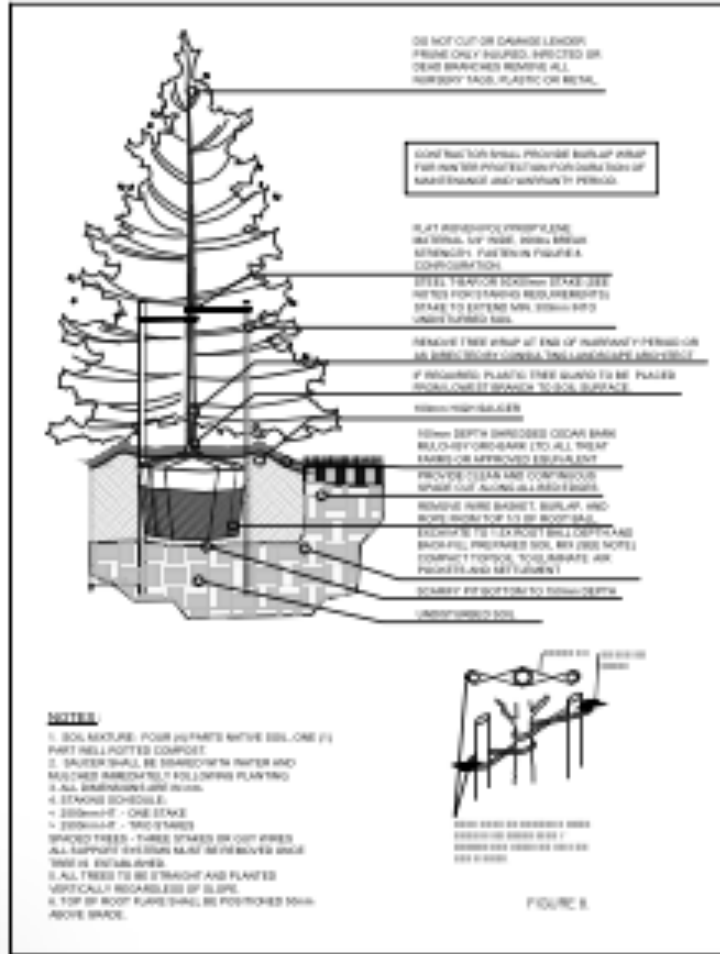


## UPDATE RE BERM CONSTRUCTION AND LANDSCAPING

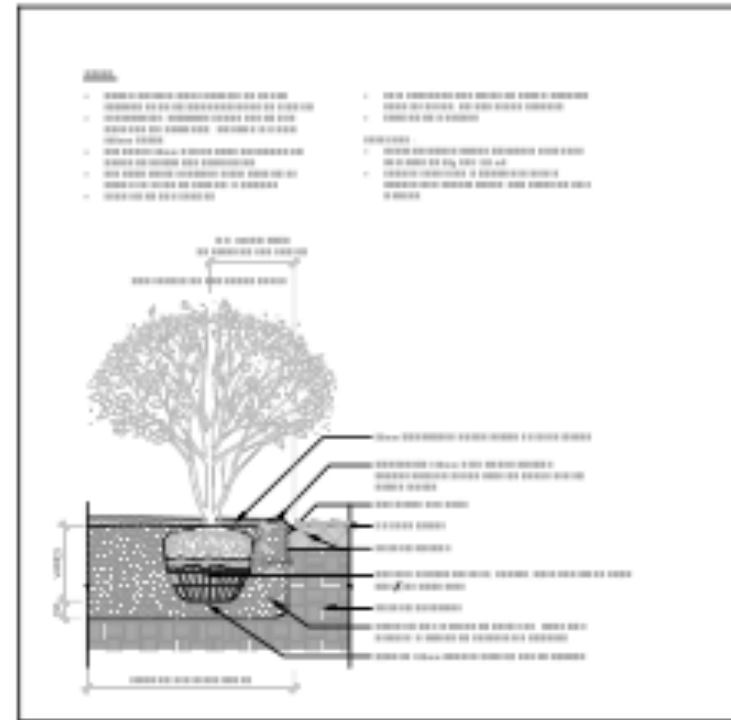
- Landscaping to begin in next four to six weeks, subject to weather conditions
- Estimated 8 weeks of work to complete
- Securities are in place with City of Kingston and Loyalist Township to ensure that landscaping is done in accordance with the plans



# LANDSCAPING PLAN – TYPES OF VEGETATION

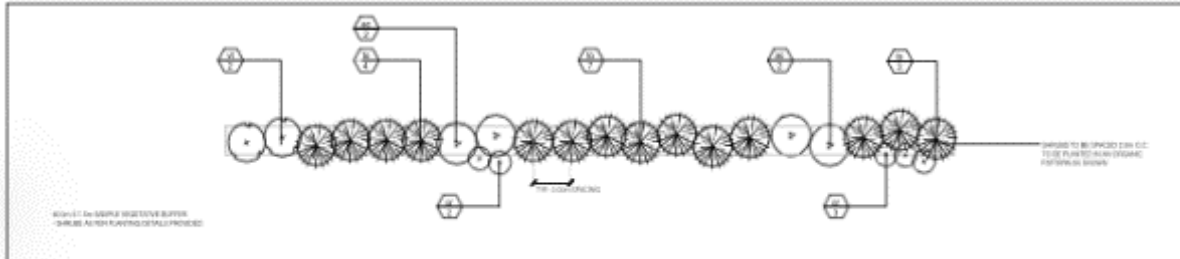


**D1** BALLED & BURLAPPED WIRE BASKET CONIFEROUS TREE  
N.T.S.



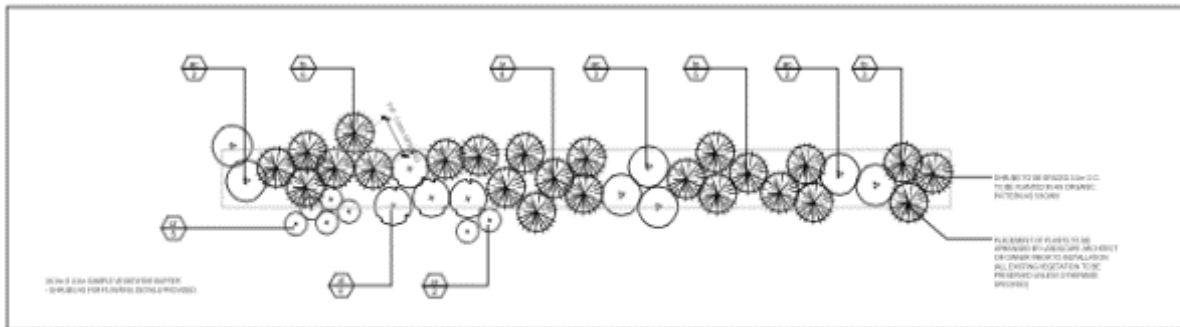
**D2** SHRUB INSTALLATION  
N.T.S.

# DETAILS OF LANDSCAPING PLANS - BUFFERS A AND B



D3 BUFFER A - 1.5m WIDE VEGETATIVE BUFFER  
 1000 - 100

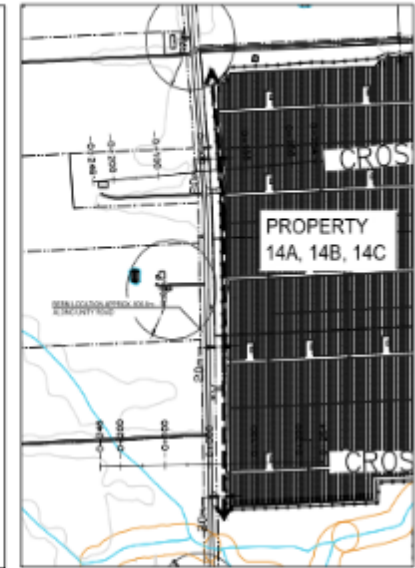
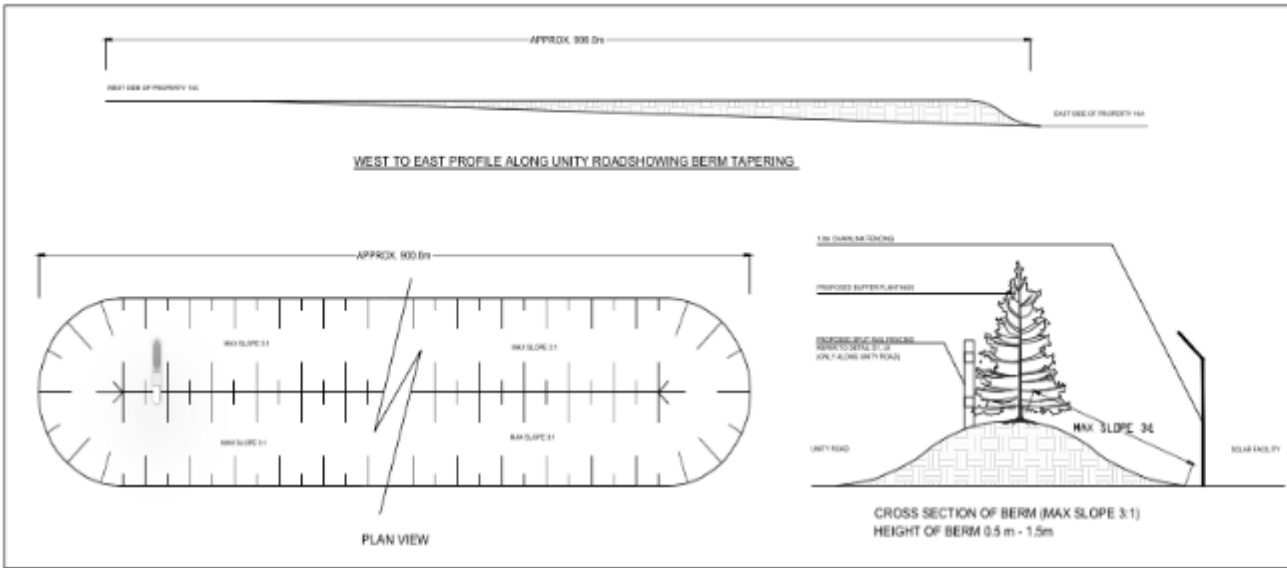
BUFFER A - VEGETATIVE BUFFER PLANT LIST											
KEY	BOTANICAL NAME	COMMON NAME	CAL.	SIZE	COND.	WTRURE	NATURE	MIN. O.C.	QNTY.	QNTY. TOTAL	
						HEIGHT (M)	SPREAD (M)	(M)			
01	<i>Andropogon scoparius</i>	Sensitivaria	175cm	0.5	0.5	0.5	2.0	4	157		
02	<i>Ceanothus americanus</i>	Gray Dogwood	175cm	0.5	0.5	2.0	1.5	5	158		
03	<i>Viburnum flabrum</i>	High Bush Cranberry	175cm	0.5	0.5	0.5	2.0	2	52		
04	<i>Thuja occidentalis</i>	White Cedar	175cm	0.5	20.0	2.5	2.0	14	375		
									TOTAL	25	692



D4 BUFFER B - 3.0m WIDE VEGETATIVE BUFFER  
 1000 - 100

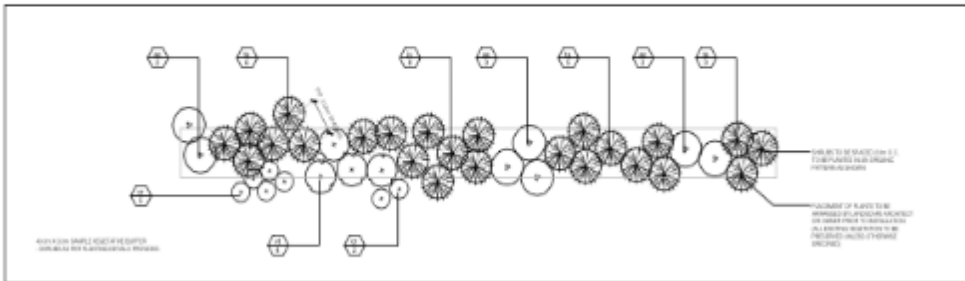
BUFFER B - ENHANCED VEGETATIVE BUFFER PLANT LIST											
KEY	BOTANICAL NAME	COMMON NAME	CAL.	SIZE	COND.	WTRURE	NATURE	MIN. O.C.	QNTY.	QNTY. TOTAL	
						HEIGHT (M)	SPREAD (M)	(M)			
BUFFER B											
01	<i>Andropogon scoparius</i>	Sensitivaria	175cm	0.5	0.5	0.5	2.0	7	157		
02	<i>Ceanothus americanus</i>	Gray Dogwood	175cm	0.5	0.5	2.0	1.5	7	157		
03	<i>Viburnum flabrum</i>	High Bush Cranberry	175cm	0.5	0.5	0.5	2.0	3	68		
04	<i>Thuja occidentalis</i>	White Cedar	175cm	0.5	20.0	2.5	2.0	3	282		
05	<i>Juniperus virginiana</i>	Eastern Red Cedar	175cm	0.5	10.0	3.0	2.0	8	183		
									TOTAL	34	754

# DETAILS OF LANDSCAPING PLANS – BUFFER C



D2 VERIFY BERM ALONG PROPERTIES 14A, 14B, 14C REFER TO PLANS FOR BERM JOINTS/ENDS

D3 BERM LOCATION ON SITE MAP



D3 BUFFER C - 3.0m WIDE VEGETATIVE BUFFER ON TOP OF BERM

**BUFFER C - ENHANCED VEGETATIVE BUFFER PLANT LIST**

KEY	SCIENTIFIC NAME	COMMON NAME	CAL.	SIZE	COND.	NATURE HEIGHT (M)	NATURE SPREAD (M)	MIN. CC (M)	DEPTH (M)	QTY TOTAL
<b>BUFFER #1</b>										
01	Arbutus menziesii	Strawberry Tree	15000	8.0	4.0	3.0	2.0	1	1	201
02	Quercus laevis	Live Oak	15000	8.0	4.0	3.0	1.5	1	1	201
03	Thuja occidentalis	Thuja	15000	8.0	4.0	3.0	1.5	1	1	141
04	Thuja occidentalis	Thuja	15000	8.0	4.0	3.0	2.0	1	1	281
05	Juniperus horizontalis	Ground Cover Juniper	15000	8.0	4.0	3.0	1.0	1	1	281
								17000	34	786

# LANDSCAPING PLAN – VISUAL SIMULATIONS



## LANDSCAPING PLAN – MITIGATION PLANTING



## QUESTIONS AND CLARIFICATIONS

Questions, Answers, Issues, Solutions  
and Clarifications




## CONTACT INFORMATION

Name	Title	Company	Phone	Email
Jason Woods	Project Director	Kingston Solar	(613) 449-7478	<a href="mailto:jwoods@cclinfraststructure.com">jwoods@cclinfraststructure.com</a>
Chris Moran	Project Manager	Kingston Solar	(613) 449-6308	<a href="mailto:cmoran@cclinfraststructure.com">cmoran@cclinfraststructure.com</a>

Kingston Solar Construction Hotline (343) 333-5911

Email = [info@kingston-solar.com](mailto:info@kingston-solar.com)



Connor, Clark & Lunn Infrastructure Ltd.  
181 University Ave, Suite 300  
Toronto, ON M5H 3M7

[www.ccliinfrastructure.com](http://www.ccliinfrastructure.com)

**KINGSTON  
SOLAR LP**