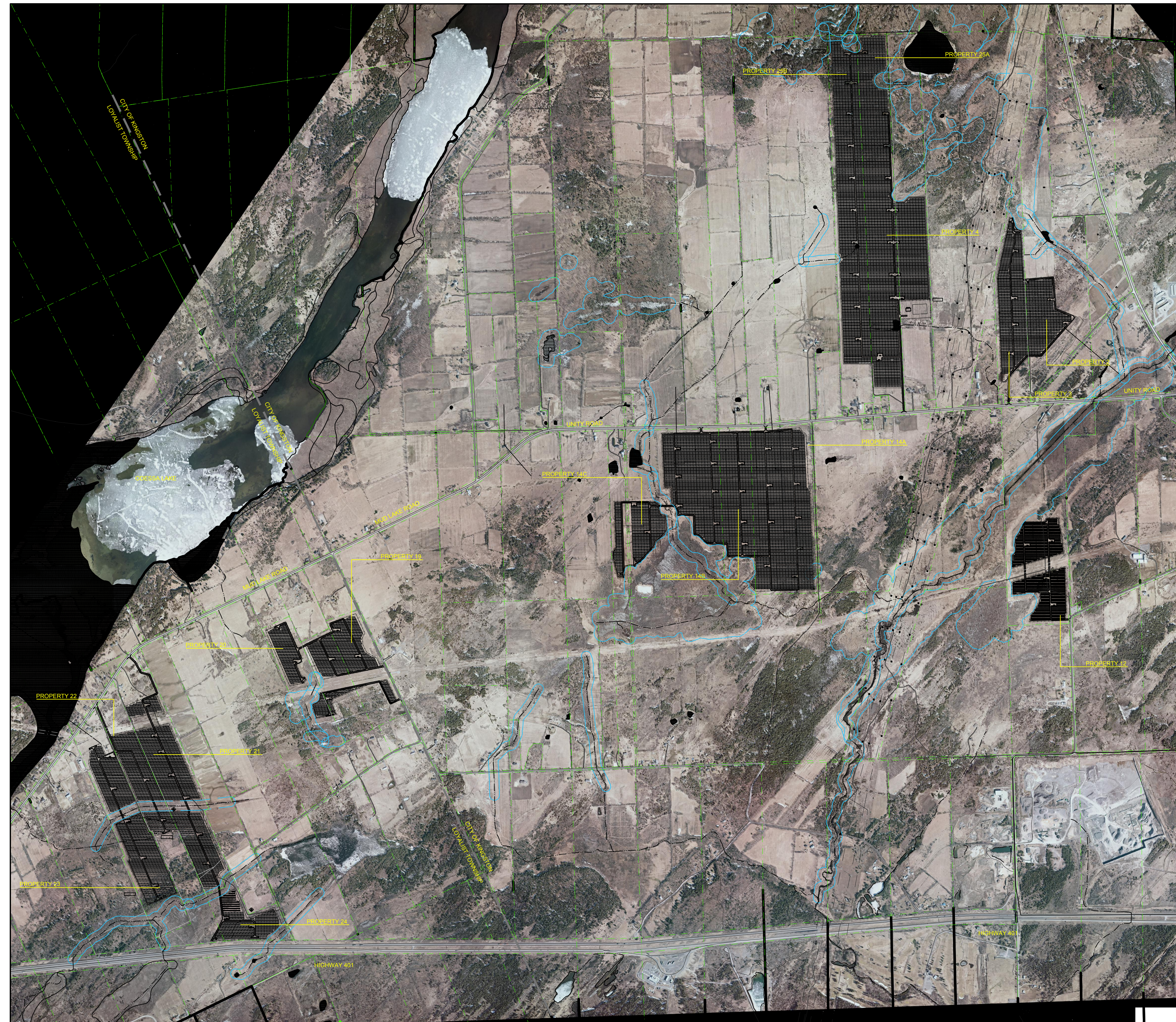


LOYALIST TOWNSHIP LAND

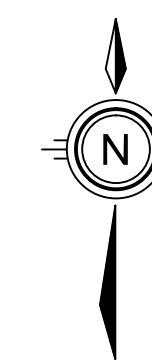


KEY PLAN
SCALE - 1:15000

SOL-LUCE KINGSTON SOLAR PV ENERGY PROJECT LANDSCAPE SUBMISSION 2 LOCATION - KINGSTON, ONTARIO

DESCRIPTION:

SOLAR FACILITY LOCATED NORTH WEST OF THE CITY OF KINGSTON. PLANS INCLUDE BUFFER MITIGATION PLANS, CROSS SECTIONS AND PLANTING DETAILS.

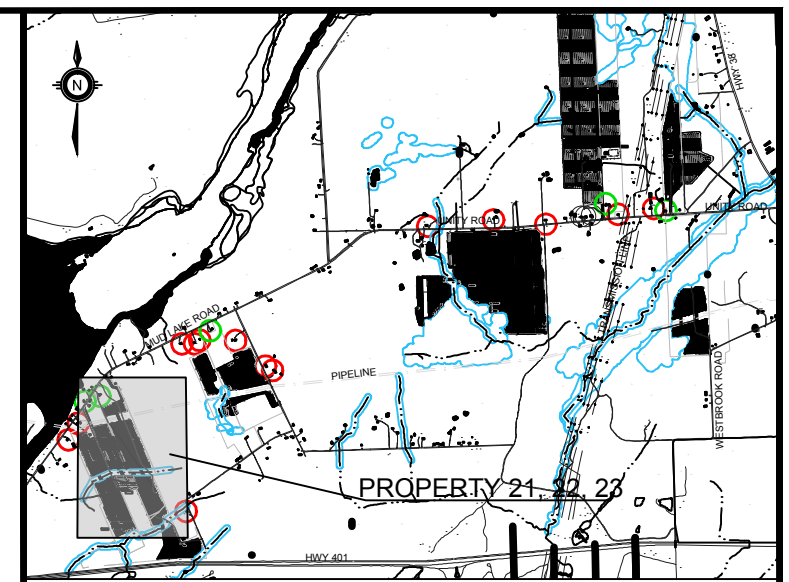


LIST OF DRAWINGS

No.	SHEET	DESCRIPTION	No.	SHEET	DESCRIPTION
		TITLE PAGE			
1	L1	BUFFER PLAN PROPERTIES 19 – 20			
2	L2	BUFFER PLAN PROPERTIES 21, 22, 23			
3	L3	BUFFER PLAN PROPERTY 24			
4	L4	CROSS SECTION 1 AND DETAILS			
5	L5	BUFFER PLANTING DETAILS			
6	L6	BUFFER PLANTING DETAILS			



379 QUEEN STREET SOUTH
KITCHENER, ONTARIO
N2G 1W6
(519) 745-9455
www.ibigroup.com



LEGEND

- PROPERTY LINE
- PROPOSED FENCE LINE
- SOLAR ARRAY
- VIEWSHED
- EXISTING VEGETATION TO REMAIN
- EXISTING STRUCTURE TO REMAIN
- EXISTING WATERCOURSE / WETLAND AREA TO REMAIN (SETBACK AS SHOWN)
- BUFFER C - ENHANCED VEGETATIVE BUFFER WITH BERM LOCATION
- BUFFER B - ENHANCED VEGETATIVE BUFFER LOCATION
- PARTICIPATING LANDOWNER
- NON-PARTICIPATING LANDOWNER

#	DATE	BY	DESCRIPTION
3	2013-11-01	TB	SUBMITTED TO LOYALIST TOWNSHIP
2	2013-05-15	TB	SUBMITTED TO LOYALIST TOWNSHIP
1	2013-04-16	JB	SUBMITTED TO CLIENT FOR REVIEW

REVISIONS

#	DATE	BY	DESCRIPTION

APPROVALS

APPROVED: _____ DATE: _____

ASSOCIATION OF LANDSCAPE ARCHITECTS OF ONTARIO
OLA
 T. TIFFANY M. BRIDE
 (Signature)

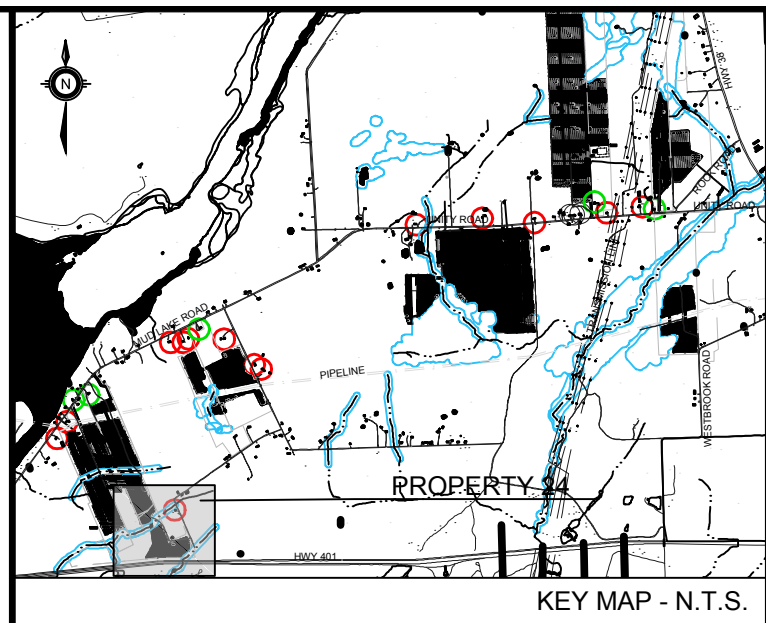
IBI GROUP
 379 QUEEN STREET SOUTH
 KITCHENER, ONTARIO
 N2G 1W6
 (519) 745-9455
 www.ibigroup.com

KINGSTON SOLAR LP

SOL-LUCE KINGSTON SOLAR PV ENERGY PROJECT
 LOYALIST TOWNSHIP, ONTARIO

BUFFER PLAN PROPERTIES 21,22,23

DESIGNED BY:	JB	SCALE:	1:3000
DRAWN BY:	TB	DRAFT PLAN #:	33996L
CHECKED BY:	TB	FILE NUMBER:	33996L
DATE:	03/20/2013	SHEET NUMBER:	21-23



LEGEND

- PROPERTY LINE
- PROPOSED FENCE LINE
- SOLAR ARRAY
- WATERCOURSE SETBACK
- EXISTING VEGETATION
- H
 NON-PARTICIPATING LANDOWNER (100m SETBACK AS SHOWN)
- EXISTING STRUCTURE TO REMAIN

#	DATE	BY	DESCRIPTION
3	2013-11-01	TB	SUBMITTED TO LOYALIST TOWNSHIP
2	2013-05-15	TB	SUBMITTED TO LOYALIST TOWNSHIP
1	2013-04-16	JB	SUBMITTED TO CLIENT FOR REVIEW

REVISIONS



APPROVED _____ DATE _____

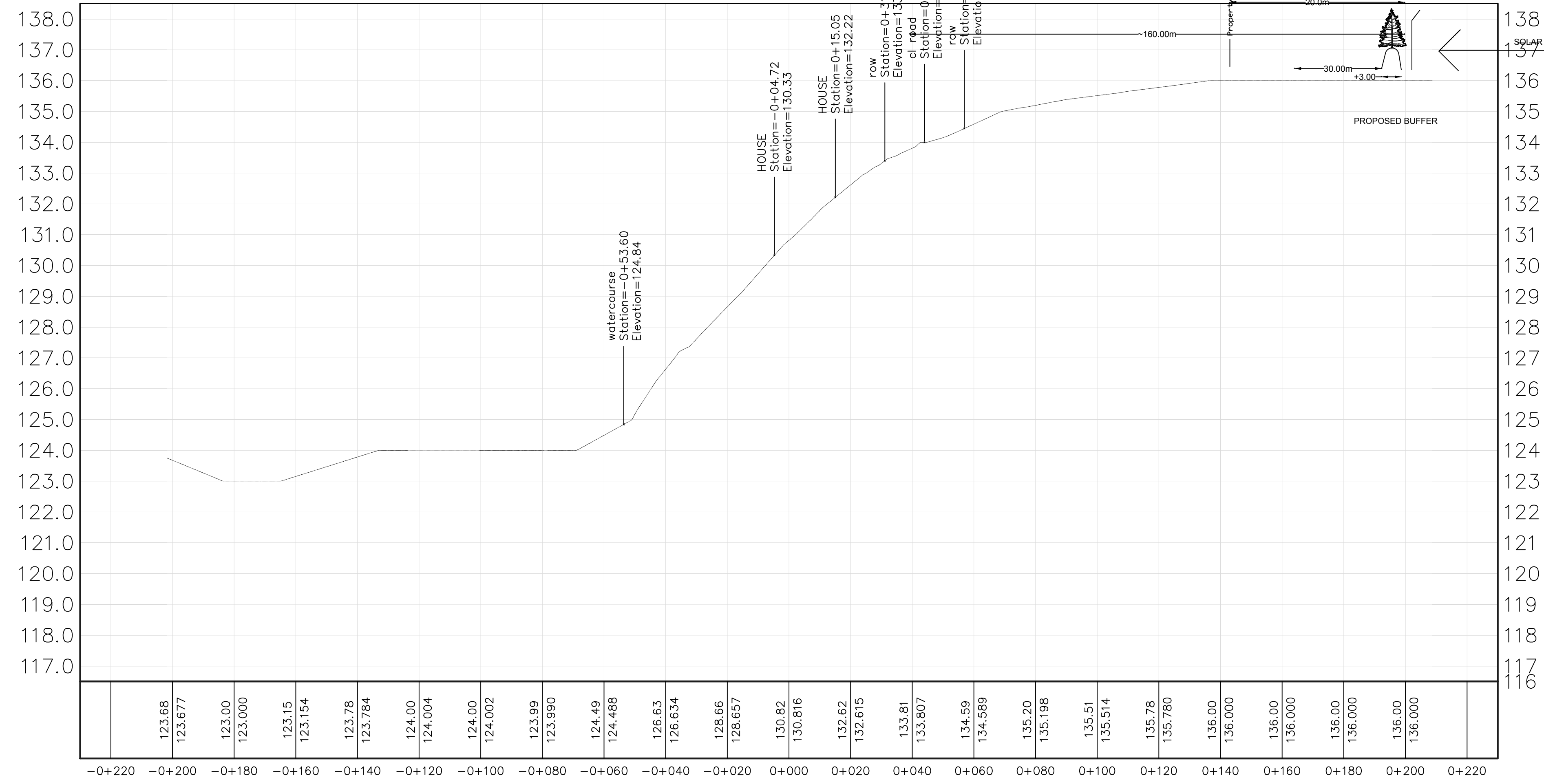
IBI GROUP 379 QUEEN STREET SOUTH
 KITCHENER, ONTARIO
 N2G 1W6
 (519) 745-9455
 www.ibigroup.com

KINGSTON SOLAR LP

**SOL-LUCE KINGSTON SOLAR PV
 ENERGY PROJECT**
 LOYALIST TOWNSHIP, ONTARIO

BUFFER PLAN PROPERTY 24

DESIGNED BY:	JB	SCALE:	1:2000
DRAWN BY:	JB	DRAWING PLAN #:	
CHECKED BY:	TB	FILE NUMBER:	33996L
DATE:	03/20/2013	SHEET NUMBER:	L-3



C1 CROSS SECTION 1 - PROPERTY 22
SCALE: 1:1000

#	DATE	BY	DESCRIPTION
3	2013-11-01	TB	SUBMITTED TO LOYALIST TOWNSHIP
2	2013-05-15	TB	SUBMITTED TO LOYALIST TOWNSHIP
1	2013-04-16	JB	SUBMITTED TO CLIENT FOR REVIEW

REVISIONS

APPROVALS

APPROVED _____ DATE _____

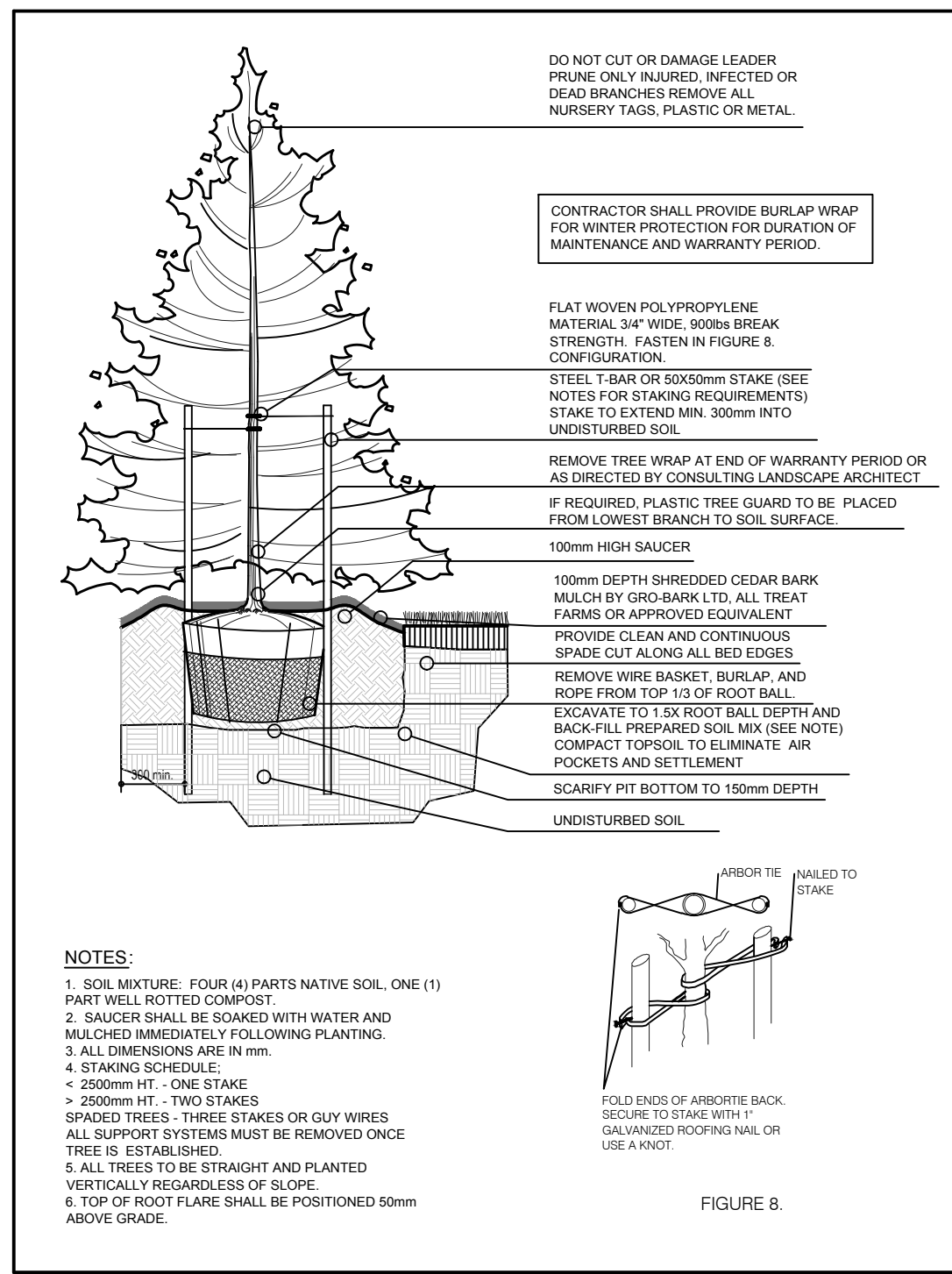
IBI GROUP
379 QUEEN STREET SOUTH
KITCHENER, ONTARIO
N2G 1W6
(519) 745-9455
www.ibigroup.com

KINGSTON SOLAR LP

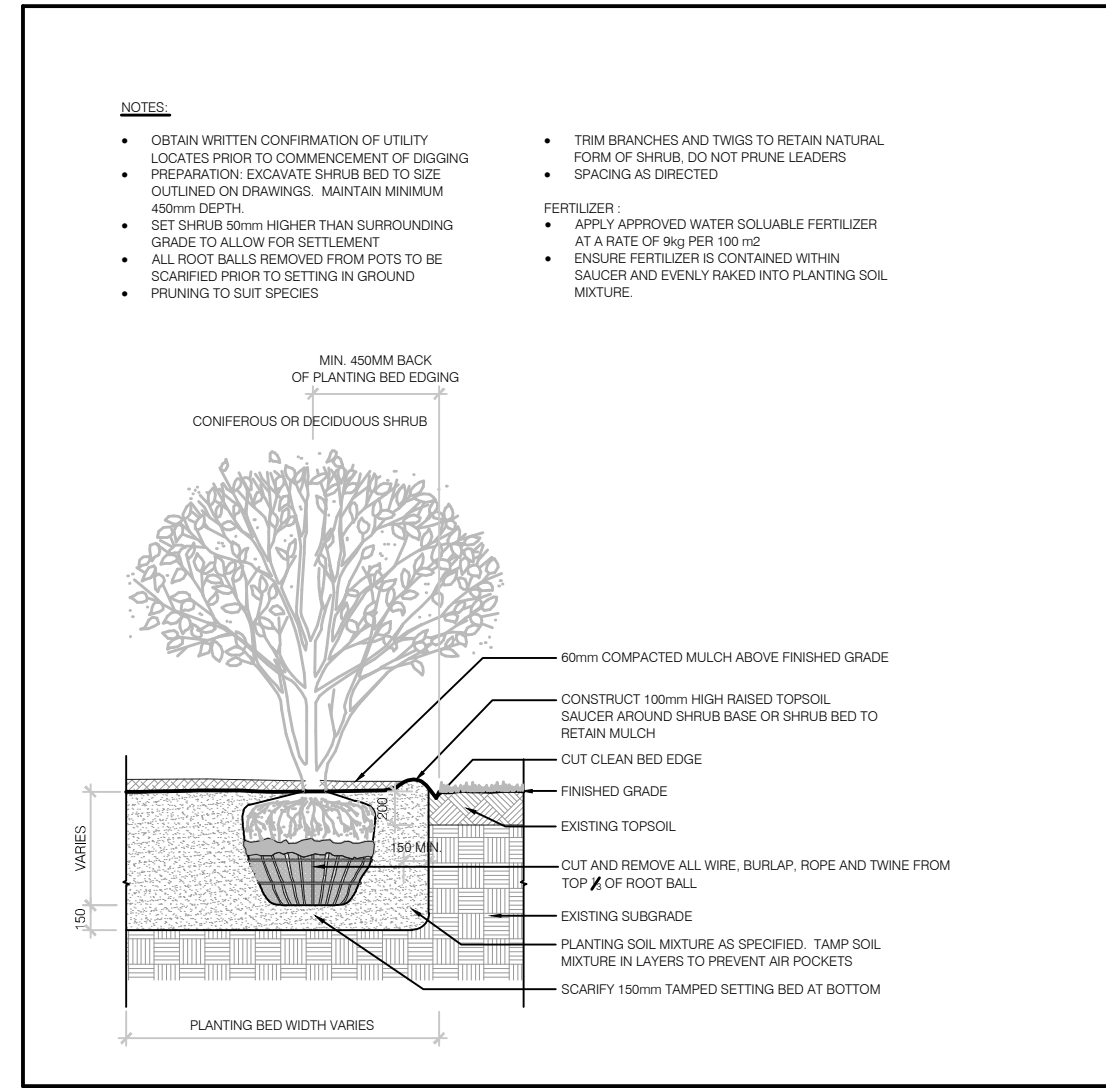
SOL-LUCE KINGSTON SOLAR PV
ENERGY PROJECT
LOYALIST TOWNSHIP, ONTARIO

LANDSCAPE BUFFER
CROSS SECTIONS AND DETAILS

DESIGNED BY:	JB	SCALE:	--
DRAWN BY:	JB	DRAFT PLAN #:	--
CHECKED BY:	TB	FILE NUMBER:	33996L
DATE:	03/20/2013	SHEET NUMBER:	1 of 4

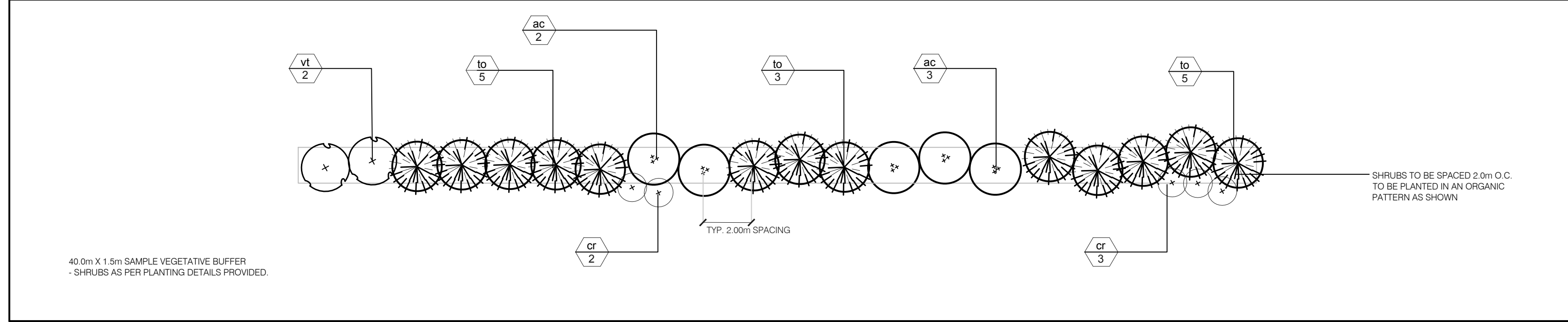


D1 BALLED & BURLAPPED WIRE BASKET CONIFEROUS TREE
N.T.S.

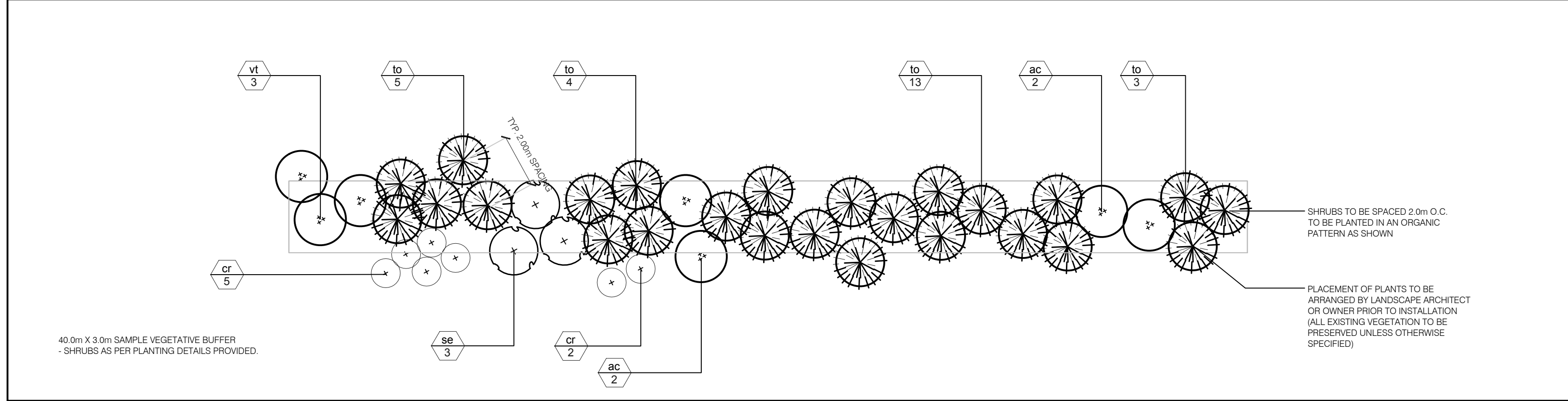


D2 SHRUB INSTALLATION
N.T.S.

- LANDSCAPE NOTES:**
- ALL WORK TO BE CARRIED OUT IN ACCORDANCE WITH BY-LAWS AND CODES HAVING JURISDICTION OVER SITE LOCATION.
 - COMPLETE ALL WORK TO THE SATISFACTION OF THE LANDSCAPE ARCHITECT.
 - REPORT ANY CHANGES, DISCREPANCIES OR SUBSTITUTIONS TO THE LANDSCAPE ARCHITECT FOR REVIEW. OBTAIN APPROVAL FROM THE LANDSCAPE ARCHITECT BEFORE PROCEEDING.
 - IT IS THE CONTRACTOR'S RESPONSIBILITY TO DETERMINE EXISTING SERVICE LOCATIONS.
 - EXACT LOCATIONS OF PLANT MATERIAL WILL BE DETERMINED BY PLACEMENT OF SITE SERVICES SUCH AS HYDRO VAULTS, METERS, UTILITIES ROOF RAIN WATER LEADERS, DRIVEWAYS, LIGHT STANDARDS, ETC.
 - ALL PLANT MATERIAL LOCATIONS TO BE STAKED OR MARKED OUT AND APPROVED BY LANDSCAPE ARCHITECT PRIOR TO INSTALLATION.
 - SUPPLY ALL PLANT MATERIAL IN ACCORDANCE WITH THE CANADIAN STANDARDS FOR NURSERY STOCK (8th Ed.).
 - INSTALL PLANT MATERIAL ACCORDING TO DETAILS SHOWN.
 - DISTURBED SOIL AREAS AROUND TREES AND SHRUBS ARE TO BE COVERED WITH SHREDED CONIFER BARK MULCH SUCH AS CANADA RED OR GRO-BARK 50MM MULCH OR APPROVED EQUIVALENT. ALTERNATIVE MULCHES MUST BE APPROVED BY THE LANDSCAPE ARCHITECT.
 - CONTRACTOR TO UTILIZE LAYOUT DIMENSIONS WHERE PROVIDED.
 - PROVIDE PLANTING BED AREA AS NOTED ON THE DRAWING OR TO ACCOMMODATE MATURE SIZE OF PLANT MATERIAL.
 - ALL SUPPORT SYSTEMS MUST BE REMOVED BY THE CONTRACTOR AT TIME OF FINAL ACCEPTANCE. NO EXTRAS WILL BE PAID TO COMPLETE THIS WORK.
 - SUPPLY AND PLACE TOPSOIL IN ACCORDANCE WITH OPSS 570 TO A MINIMUM DEPTH OF 150mm UNLESS OTHERWISE SPECIFIED.
 - SUPPLY AND PLACE SOD IN ACCORDANCE WITH OPSS 571 UNLESS OTHERWISE SPECIFIED.
 - SUPPLY AND PLACE SEED IN ACCORDANCE WITH OPSS 572 UNLESS OTHERWISE SPECIFIED. ALL 5:1 OR GREATER SLOPES TO BE SEEDED WITH TACIFIER. CONTRACTOR TO PROVIDE NECESSARY EROSION CONTROL PROTECTION AS REQUIRED TO ENSURE SOIL STABILIZATION AND PROPER SEED GERMINATION.
 - ALL DIMENSIONS IN METRES UNLESS OTHERWISE NOTED.
 - IF DISCREPANCIES ARISE BETWEEN PLANT MATERIAL COUNT SHOWN ON DRAWING AND PLANT LIST, THE DRAWING SHALL BE CONSIDERED CORRECT.
 - CONTRACTOR TO PROVIDE MINIMUM TWO (2) YEAR WARRANTY FROM DATE ACCEPTED ON ALL WORK UNLESS OTHERWISE SPECIFIED.
 - ANY SITE PLAN OR GRADING AND SERVISING SHOWN IS FOR INFORMATION ONLY. REFER TO APPROVED DRAWINGS.
 - NOT FOR CONSTRUCTION UNLESS STAMPED, SIGNED AND DATED BY LANDSCAPE ARCHITECT.
 - DRAWINGS NOT TO BE REPRODUCED WITHOUT WRITTEN CONSENT FROM LANDSCAPE ARCHITECT.
 - APPROVAL OF LANDSCAPE PLAN TO BE OBTAINED FROM MUNICIPALITY.
 - FOR GRADING AND SERVISING INFORMATION REFER TO THE CONSULTING ENGINEER'S DRAWINGS.
 - FOR LIGHTING INFORMATION AND POWER DISTRIBUTION REFER TO THE ELECTRICAL CONSULTANT'S DRAWINGS.



D3 BUFFER A - 1.5m WIDE VEGETATIVE BUFFER
SCALE: 1:150



D4 BUFFER B - 3.0m WIDE VEGETATIVE BUFFER
SCALE: 1:150

BUFFER A - VEGETATIVE BUFFER PLANT LIST

KEY	BOTANICAL NAME	COMMON NAME	CAL.	SIZE	COND	MATURE HEIGHT (m)	MATURE SPREAD (m)	MIN. O.C. SPACING (m)	QNTY.	QNTY. TOTAL	
ac	<i>Amelanchier canadensis</i>	Serviceberry		175cm	B.B.	6.0	5.0	2.0	5	12	
cr	<i>Comus racemosa</i>	Gray Dogwood		175cm	B.B.	3.0	2.5	1.0	5	12	
vt	<i>Viburnum trilobum</i>	High Bush Cranberry		175cm	B.B.	3.0	3.0	2.0	2	5	
to	<i>Thuja occidentalis</i>	White Cedar		175cm	B.B.	20.0	2.5	2.0	13	30	
									TOTAL	25	59

BUFFER B - ENHANCED VEGETATIVE BUFFER PLANT LIST

KEY	BOTANICAL NAME	COMMON NAME	CAL.	SIZE	COND	MATURE HEIGHT (m)	MATURE SPREAD (m)	MIN. O.C. SPACING (m)	QNTY.	QNTY. TOTAL	
ac	<i>Amelanchier canadensis</i>	Serviceberry		175cm	B.B.	6.0	3.0	2.0	4	70	
cr	<i>Comus racemosa</i>	Gray Dogwood		100cm	B.B.	3.0	2.5	1.0	7	122	
vt	<i>Viburnum trilobum</i>	High Bush Cranberry		175cm	B.B.	3.0	3.0	2.0	3	53	
to	<i>Thuja occidentalis</i>	White Cedar		175cm	B.B.	20.0	2.0	2.0	25	438	
									TOTAL	39	683

3	2013-11-01	TB	SUBMITTED TO LOYALIST TOWNSHIP
2	2013-05-15	TB	SUBMITTED TO LOYALIST TOWNSHIP
1	2013-04-16	JB	SUBMITTED TO CLIENT FOR REVIEW
#1	DATE	BY	DESCRIPTION

REVISIONS

APPROVALS



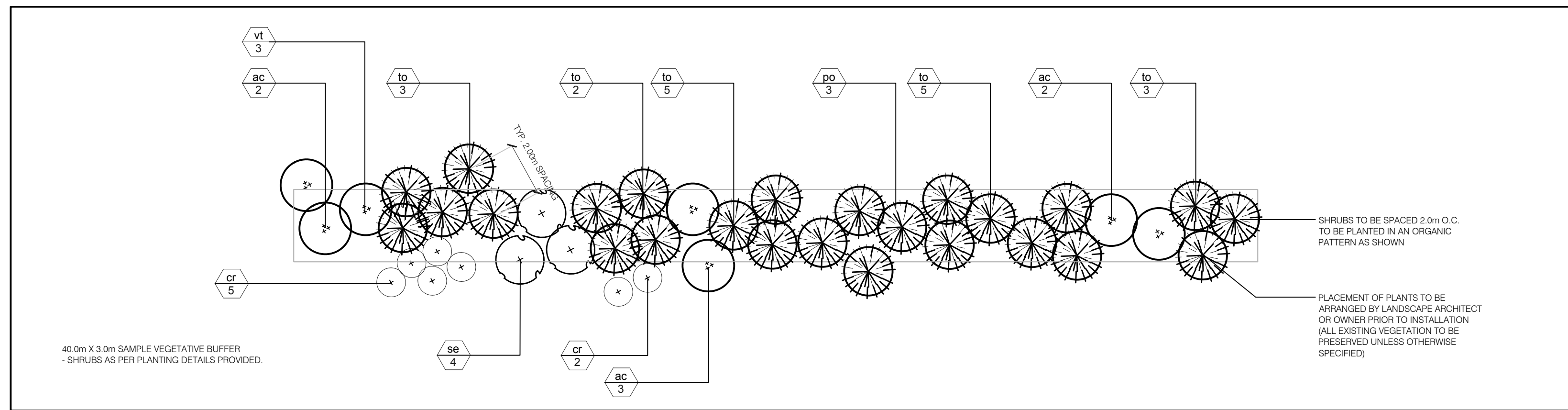
APPROVED _____ DATE _____

IBI GROUP
379 QUEEN STREET SOUTH
KITCHENER, ONTARIO
N2G 1W6
(519) 745-9455
www.ibigroup.com

KINGSTON SOLAR LP
SOL-LUCE KINGSTON SOLAR PV
ENERGY PROJECT
LOYALIST TOWNSHIP, ONTARIO

LANDSCAPE BUFFER DETAILS

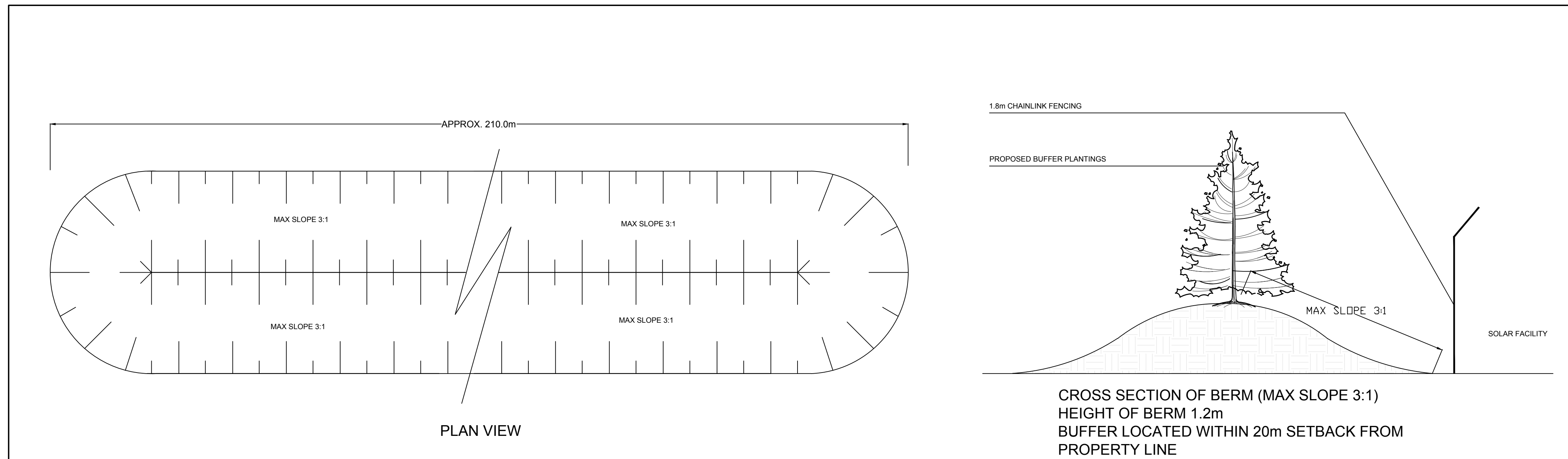
DESIGNED BY:	JB	SCALE:	--
DRAWN BY:	JB	DRAFT PLAN #:	--
CHECKED BY:	TB	FILE NUMBER:	33996L
DATE:	03/20/2013	SHEET NUMBER:	L-5



BUFFER C - ENHANCED VEGETATIVE BUFFER PLANT LIST

KEY	BOTANICAL NAME	COMMON NAME	CAL.	SIZE	COND.	MATURE HEIGHT (m)	MATURE SPREAD (m)	MIN. O.C. SPACING (m)	QNTY.	QNTY. TOTAL	
BUFFER B											
ac	Amelanchier canadensis	Serviceberry		175cm	B.B.	6.0	3.0	2.0	7	37	
cr	Cornus racemosa	Gray Dogwood		100cm	B.B.	3.0	2.5	1.0	7	37	
vt	Viburnum trilobum	High Bush Cranberry		175cm	B.B.	3.0	3.0	2.0	3	16	
to	Thuja occidentalis	White Cedar		175cm	B.B.	20.0	2.0	2.0	18	95	
sc	Sambucus canadensis	Elderberry		175cm	B.B.	4.0	3.0	2.0	4	21	
po	Physocarpus opulifolia	Ninebark		175cm	B.B.	2.0	2.0	2.0	3	16	
									TOTAL	42	222

D1 BUFFER C - 3.0m WIDE VEGETATIVE BUFFER ON TOP OF BERM
SCALE: 1:150



D2 1.2M HEIGHT SEEDED BERM ALONG PROPERTY Z3
N.T.S.

LANDSCAPE NOTES:

- ALL WORK TO BE CARRIED OUT IN ACCORDANCE WITH BY-LAWS AND CODES HAVING JURISDICTION OVER SITE LOCATION.
- COMPLETE ALL WORK TO THE SATISFACTION OF THE LANDSCAPE ARCHITECT.
- REPORT ANY CHANGES, DISCREPANCIES OR SUBSTITUTIONS TO THE LANDSCAPE ARCHITECT FOR REVIEW. OBTAIN APPROVAL FROM THE LANDSCAPE ARCHITECT BEFORE PROCEEDING.
- IT IS THE CONTRACTOR'S RESPONSIBILITY TO DETERMINE EXISTING SERVICE LOCATIONS.
- EXACT LOCATIONS OF PLANT MATERIAL WILL BE DETERMINED BY PLACEMENT OF SITE SERVICES SUCH AS HYDRO VAULTS, METERS, UTILITIES ROOF RAIN WATER LEADERS, DRIVEWAYS, LIGHT STANDARDS, ETC.
- ALL PLANT MATERIAL LOCATIONS TO BE STAKED OR MARKED OUT AND APPROVED BY LANDSCAPE ARCHITECT PRIOR TO INSTALLATION.
- SUPPLY ALL PLANT MATERIAL IN ACCORDANCE WITH THE CANADIAN STANDARDS FOR NURSERY STOCK (8th Ed.).
- INSTALL PLANT MATERIAL ACCORDING TO DETAILS SHOWN.
- DISTURBED SOIL AREAS AROUND TREES AND SHRUBS ARE TO BE COVERED WITH SHREDED CONIFER BARK MULCH SUCH AS CANADA RED OR GRID BARK 50M MULCH, OR APPROVED EQUIVALENT. ALTERNATIVE MULCHES MUST BE APPROVED BY THE LANDSCAPE ARCHITECT.
- CONTRACTOR TO UTILIZE LAYOUT DIMENSIONS WHERE PROVIDED.
- PROVIDE PLANTING BED AREA AS NOTED ON THE DRAWING OR TO ACCOMMODATE MATURE SIZE OF PLANT MATERIAL.
- ALL SUPPORT SYSTEMS MUST BE REMOVED BY THE CONTRACTOR AT TIME OF FINAL ACCEPTANCE. NO EXTRAS WILL BE PAID TO COMPLETE THIS WORK.
- SUPPLY AND PLACE TOPSOIL IN ACCORDANCE WITH OPSS 570 TO A MINIMUM DEPTH OF 150mm UNLESS OTHERWISE SPECIFIED.
- SUPPLY AND PLACE SOD IN ACCORDANCE WITH OPSS 571 UNLESS OTHERWISE SPECIFIED.
- SUPPLY AND PLACE SEED IN ACCORDANCE WITH OPSS 572 UNLESS OTHERWISE SPECIFIED. ALL 5:1 OR GREATER SLOPES TO BE SEEDED WITH TACIFER. CONTRACTOR TO PROVIDE NECESSARY EROSION CONTROL PROTECTION AS REQUIRED TO ENSURE SOIL STABILIZATION AND PROPER SEED GERMINATION.
- ALL DIMENSIONS IN METRES UNLESS OTHERWISE NOTED.
- IF DISCREPANCIES ARISE BETWEEN PLANT MATERIAL COUNT SHOWN ON DRAWING AND PLANT LIST, THE DRAWING SHALL BE CONSIDERED CORRECT.
- CONTRACTOR TO PROVIDE MINIMUM TWO (2) YEAR WARRANTY FROM DATE ACCEPTED ON ALL WORK UNLESS OTHERWISE SPECIFIED.
- ANY SITE PLAN OR GRADING AND SERVICING SHOWN IS FOR INFORMATION ONLY. REFER TO APPROVED DRAWINGS.
- NOT FOR CONSTRUCTION UNLESS STAMPED, SIGNED AND DATED BY LANDSCAPE ARCHITECT.
- DRAWINGS NOT TO BE REPRODUCED WITHOUT WRITTEN CONSENT FROM LANDSCAPE ARCHITECT.
- APPROVAL OF LANDSCAPE PLAN TO BE OBTAINED FROM MUNICIPALITY.
- FOR GRADING AND SERVICING INFORMATION REFER TO THE CONSULTING ENGINEER'S DRAWINGS.
- FOR LIGHTING INFORMATION AND POWER DISTRIBUTION REFER TO THE ELECTRICAL CONSULTANT'S DRAWINGS.

#	DATE	BY	DESCRIPTION
3	2013-11-01	TB	SUBMITTED TO LOYALIST TOWNSHIP
2	2013-05-15	TB	SUBMITTED TO LOYALIST TOWNSHIP
1	2013-04-16	JB	SUBMITTED TO CLIENT FOR REVIEW

REVISIONS

APPROVALS

APPROVED _____ DATE _____

379 QUEEN STREET SOUTH
KITCHENER, ONTARIO
N2G 1W6
(519) 745-9455
www.ibigroup.com

KINGSTON SOLAR LP

SOL-LUCE KINGSTON SOLAR PV ENERGY PROJECT
LOYALIST TOWNSHIP, ONTARIO

LANDSCAPE BUFFER DETAILS

DESIGNED BY: JB	SCALE: -
DRAWN BY: JB	DRAFT PLAN #: -
CHECKED BY: TB	FILE NUMBER: 33966L
DATE: 03/20/2013	SHEET NUMBER: 1-6