

Significant Noise Source Location - Partial (North End)

Sol-Luce Kingston Solar PV Energy Project - Kingston, Ontario



Project # TC111406

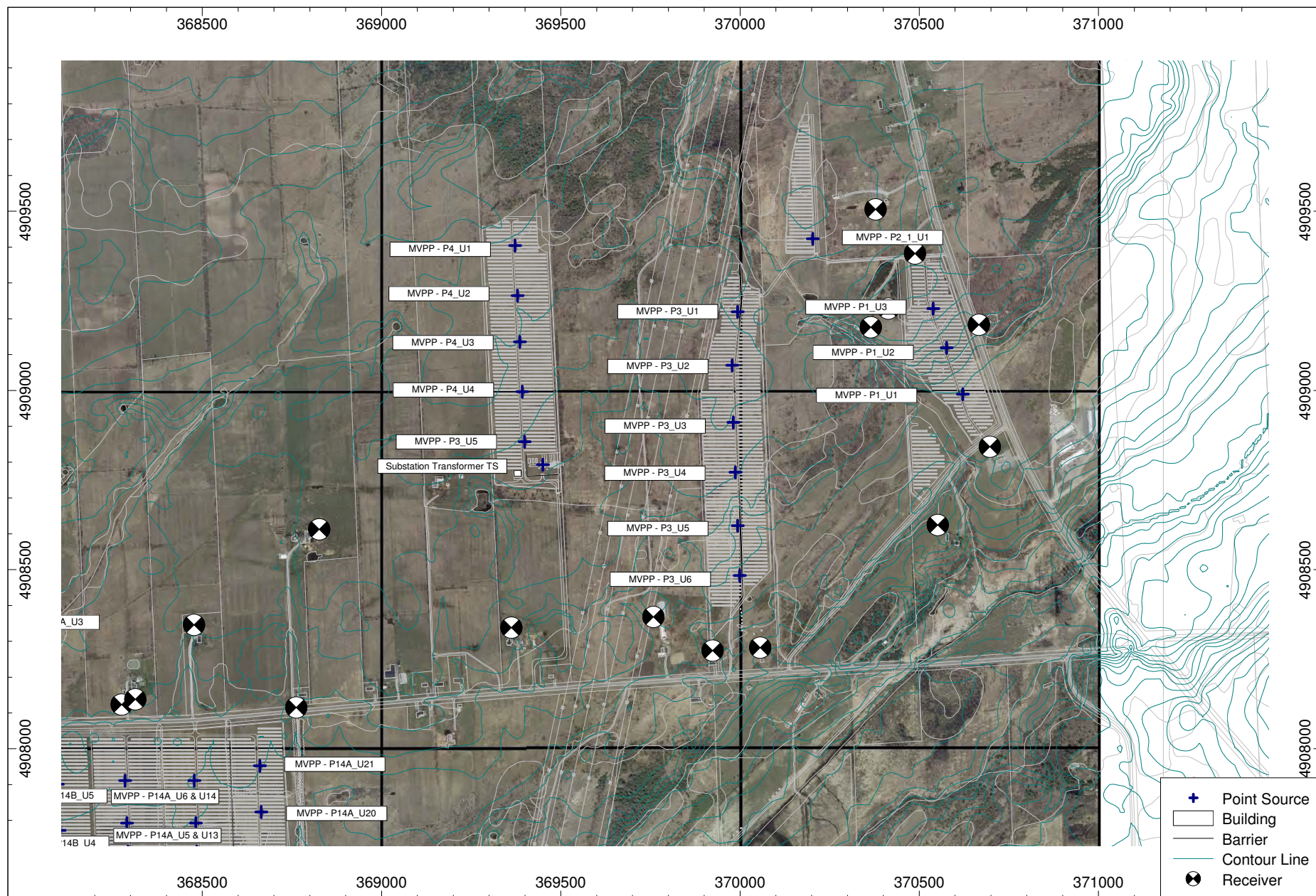
Drawn by: MS

Figure: 4

Approx. Scale: 1:15,000

Date: May 2012





Significant Noise Source Location - Partial (East End)

Sol-Luce Kingston Solar PV Energy Project - Kingston, Ontario



Project # TC111406

Drawn by: MS

Figure: 5

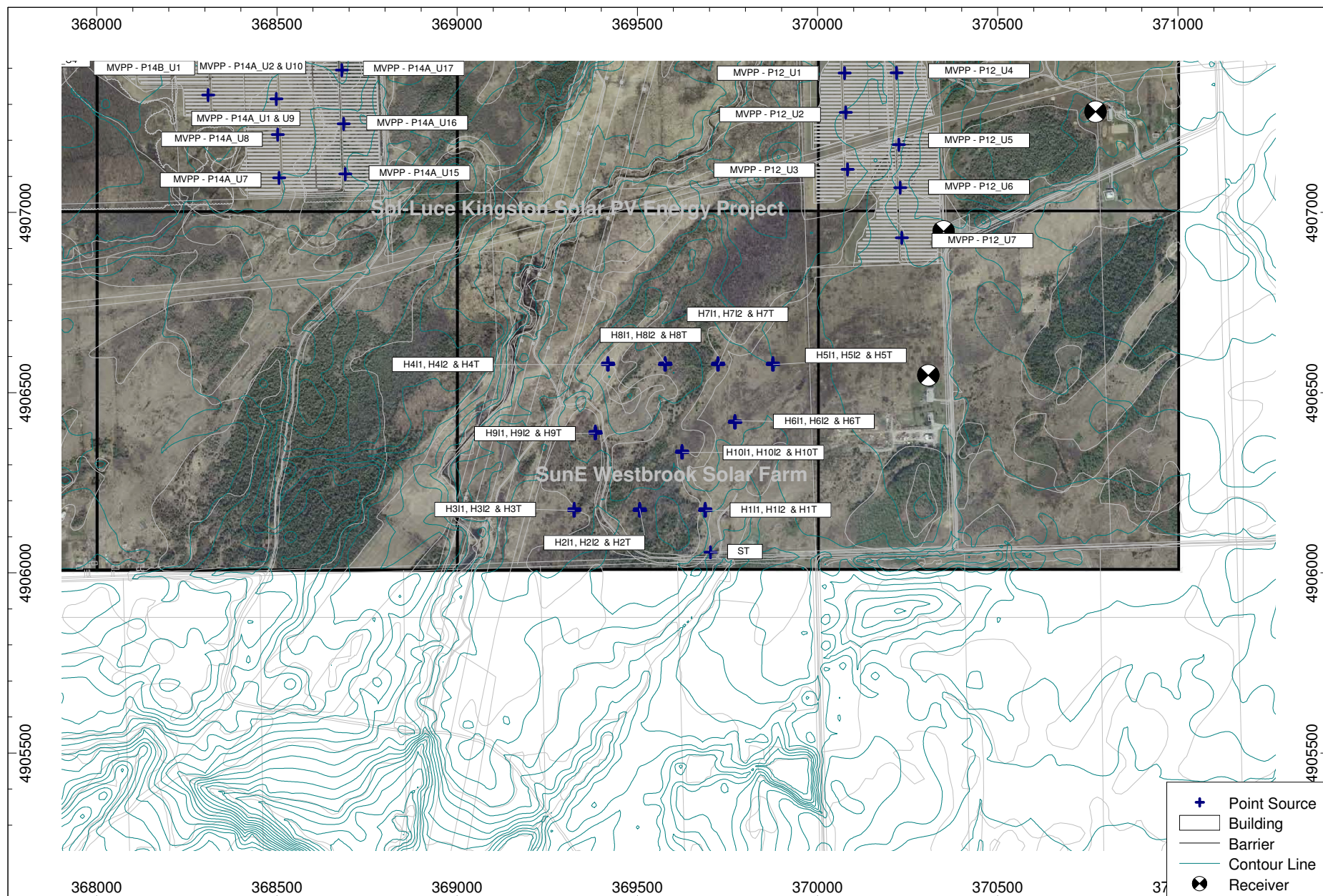
Approx. Scale:

1:15,000

Date:

May 2012





Significant Noise Source Location - Partial (South-East End)



Sol-Luce Kingston Solar PV Energy Project - Kingston, Ontario

Project # TC111406

Drawn by: MS	Figure: 6
Approx. Scale: 1:15,000	
Date: July 2012	

