

LEGEND

21 Properties Being Developed (Labelled with Reference Number)

- Other Features**
- TransCanada Natural Gas Pipeline ROW (Approx.)
 - Transmission Lines
 - Waterbody (LIO-MNR)
 - Watercourse/Waterbody (LIO-MNR)
 - Intermittent (CRCA-warm water stream)
 - Permanent (CRCA-warm water stream)

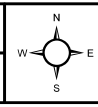
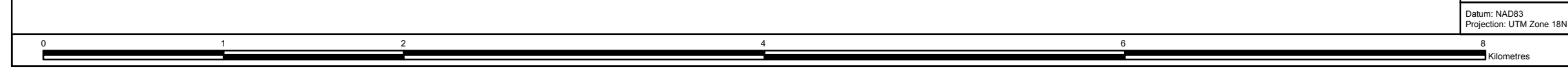
NOTES:

- Background topographic DRG map extracted from Geogratis.ca, 1:50k NTS, Natural Resources Canada
- Watercourse and Waterbody data extracted from Land Information Ontario, Ministry of Natural Resources, 2011

KINGSTON SOLAR LP

SOL-LUCE KINGSTON SOLAR PV ENERGY PROJECT

Properties Being Developed



Datum: NAD83
Projection: UTM Zone 18N

PROJECT N^o: TC121402

SCALE: 1:27,000

FIGURE: 1

DATE: June 2012

