

Significant Noise Source Location - Partial (North End)

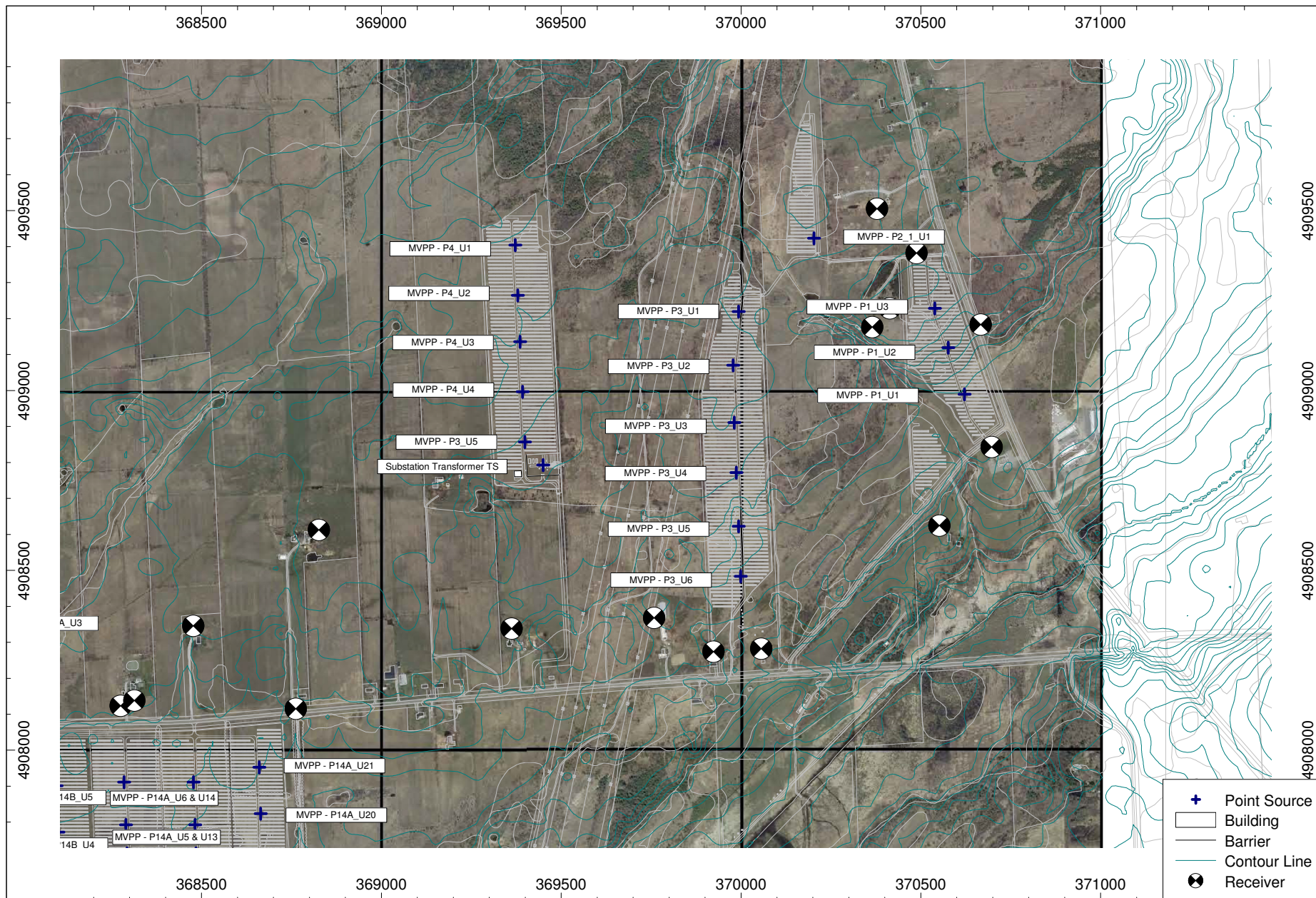
Sol-Luce Kingston Solar PV Energy Project - Kingston, Ontario



Project # TC111406

Drawn by: MS	Figure: 4
Approx. Scale: 1:15,000	
Date: May 2012	





- + Point Source
- Building
- Barrier
- Contour Line
- X Receiver

Significant Noise Source Location - Partial (East End)

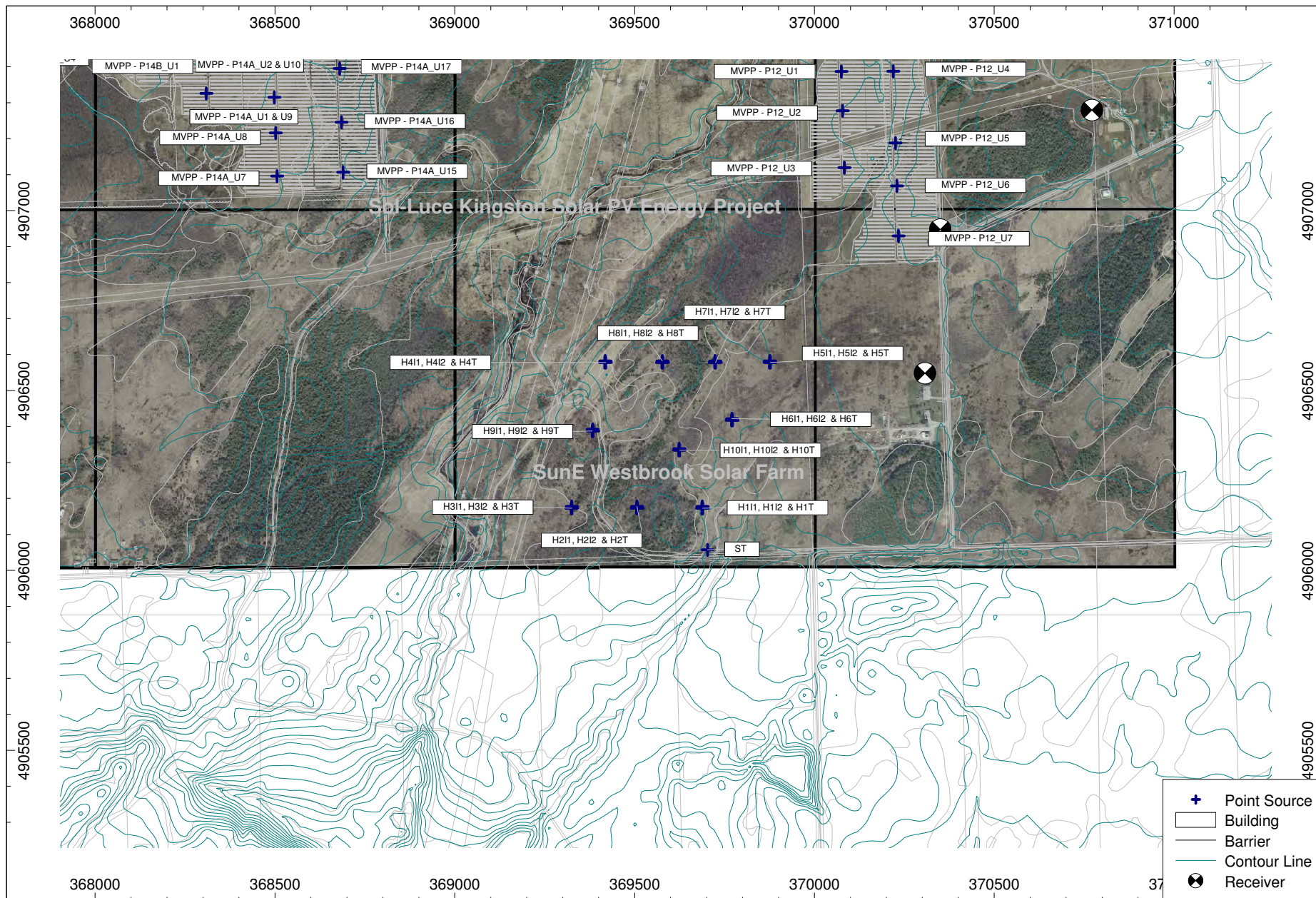
Sol-Luce Kingston Solar PV Energy Project - Kingston, Ontario



Project # TC111406

Drawn by: MS	Figure: 5
Approx. Scale: 1:15,000	
Date: May 2012	





Significant Noise Source Location - Partial (South-East End)

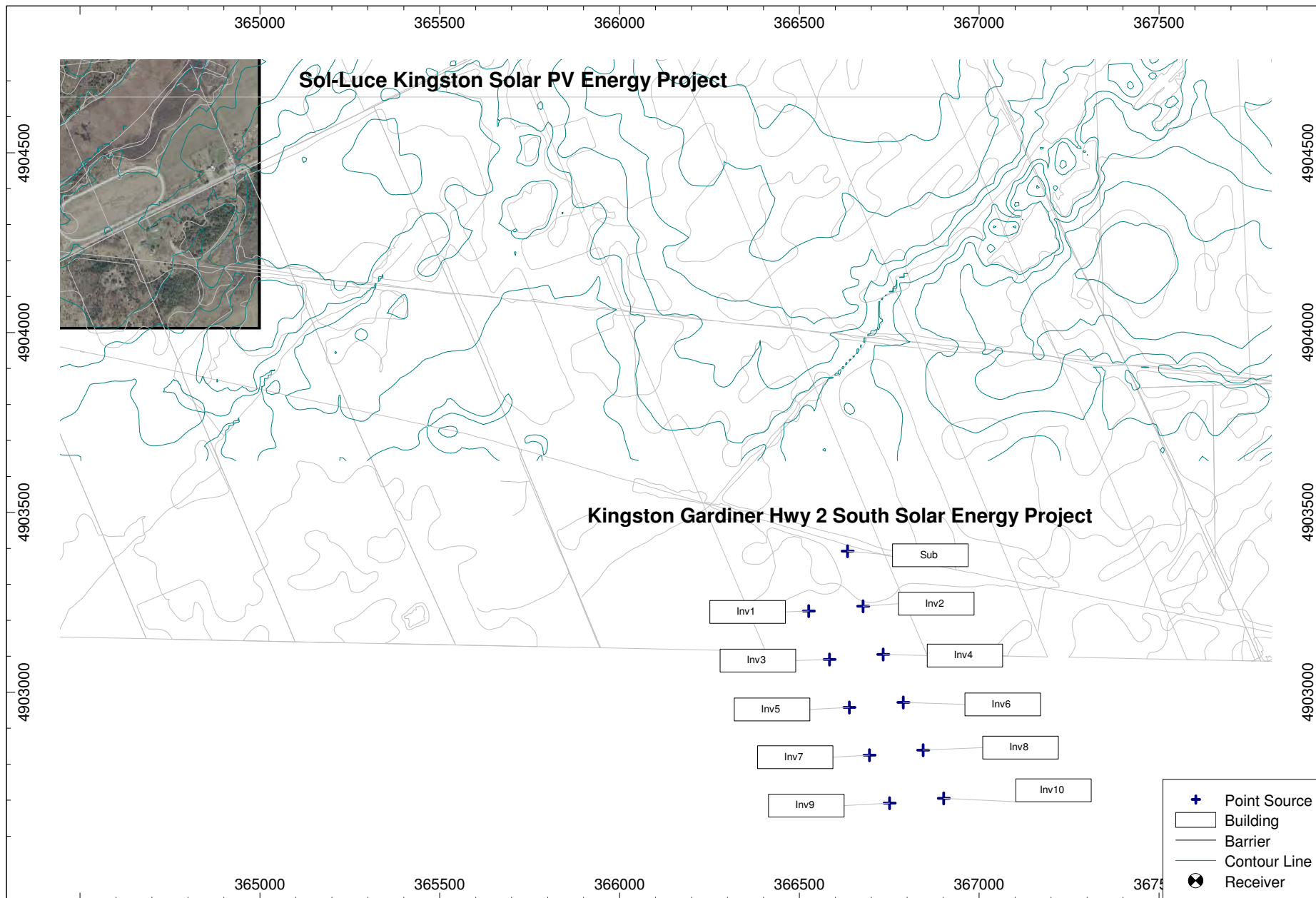


Drawn by: MS	Figure: 6
Approx. Scale: 1:15,000	
Date: July 2012	



Sol-Luce Kingston Solar PV Energy Project - Kingston, Ontario

Project # TC111406



Significant Noise Source Location - Kinston Gardiner Hwy2 South Solar Project



Drawn by: MS	Figure: 7
Approx. Scale: 1:15,000	
Date: July 2012	

