


	HE 3	HE 4
Heath Aster	✓	
Curled Dock	✓	
Red Pine	✓	
3 heads  Sensitive Fern		GC
Gray Dogwood		V
Bedstraw		GC
Carex sp		GC
Grass-leaved Goldenrod		GC

# Hedgerow Evaluation



AMEC Earth & Environmental  
160 Traders Blvd East, Mississauga, ON L4Z 3K7  
Tel: (905) 568-2929

Date:	04/18/2011	Field Personnel:	E.D., J.P.
Temperature:	10°	Cloud Cover:	100%
		Wind:	3.0
		Precipitation:	
Feature Name	#E-30	#E-37	
Minimum Height (m)	1.0m	0.5m	
Maximum Height (m)	15.0m	10.0m	
Average Height (m)	3.0m	3.0m	
Density of Understory:	M	M	
Length (width)	3m	5m	
Plant Species			
Alfalfa	GC	GC	
Aster	U	U	
Carex Sp.			
Chicory			
Enchanter's Nightshade			
Goldenrod sp.	U	U	
Milkweed sp.	U		
Oxalis sp. Wood Sorrel		GC	
Pencil flower			
Poison Ivy			
Ribes sp. Strawberry	U		
Rubus sp. (Almond)	GC	U	
St John's Wort			
Strawberry sp.	GC	GC	
Thistle		U	
Timothy	GC	U	
Vetch	GC	GC	
Virginia Creeper			
Wild Carrot	U	U	
Buckthorn sp.	U	SC	
Dogwood Red-osier	U	U	
Grape Wild Grape			
Honeysuckle sp.			
Juniper	U	U	
Lilac			
Plum Canada			
Prickly-Ash			
Raisin Wild			
Red-cedar Eastern		SC	
Sumac Staghorn			
Apple sp.	SC	SC	
Ash Red Ash			
Ash Green			
Ash Black			
Ash White			
Aspen Thrembling	U		
Basswood			
Beech American			
Blue-beech			
Cherry Black			
Cherry Choke	U	U	
Elm American	U	SC	
Hawthorn sp.	U	SC	
Hickory Shagbark			
Hickory Bitternut			
Ironwood			
Maple Red Maple			
Maple Sugar	C	U/SC	
Maple Manitoba			
Oak Red Oak			
Oak White Oak			
Oak Bur	SC		
ROSA EGLENT.	GC	U	
RED CLOVER	GC	GC	
BETULA SP.	U		
	GC	GC	
YARROW	GC		
GRASS DOGWOOD		U	
PONERTY RATS		U	
VIBURNUM RAF.	U	U	
POTENTILLA RECTA	GC		
PRICKLY ASH	U	U	
White Pine		SC	
White Cedar		C	

Vertical

Most from 2008  
(mostly Petiole)

→ 5m

1. GC = Ground Cover U = Understory sC = Sub-Canopy C = Canopy D = Dominant  
2. O = Open M = Moderate D = Dense

→ 2m → 10m over 10m

# Hedgerow Evaluation



AMEC Earth & Environmental  
160 Traders Blvd East, Mississauga, ON L4Z 3K7  
Tel: (905) 568-2929

Date: Oct 18, 2011	Field Personnel: Jan P. + Erin D
Temperature:	Cloud Cover: 90-100
	Wind: 3-4
	Precipitation: 0

Feature Name	HE-98								
Minimum Height (m)	0								
Maximum Height (m)	10								
Average Height (m)	10								
Density of Understory <sup>1</sup> :	0								
Length	Width	3m							
Plant Species <sup>2</sup>									
Alfalfa									
Aster NE	GC								
Carex Sp.									
Chicory									
Enchanter's Nightshade									
Goldenrod sp.	GC								
Milkweed sp.									
Oxalis sp.									
Pencil flower									
Poison Ivy									
Ribes sp.									
Rubus sp.									
St John's Wort									
Strawberry sp.									
Thistle									
Timothy									
Vetch Cow	GC								
Virginia Creeper									
Wild Carrot									
Buckthorn sp.									
Dogwood Red-osier	U								
Grape Wild Grape									
Honeysuckle sp.									
Juniper									
Lilac									
Plum Canada									
Prickly-Ash									
Raisin Wild									
Red-cedar Eastern	GC								
Sumac Staghorn									
Apple sp.									
Ash Red Ash									
Ash Green	C								
Ash Black									
Ash White									
Aspen Thrembling									
Basswood									
Beech American									
Blue-beech									
Cherry Black									
Cherry Choke									
Elm American	C(D)								
Hawthorn sp.									
Hickory Shagbark									
Hickory Bitternut									
Ironwood									
Maple Red Maple									
Maple Sugar									
Maple Manitoba									
Oak Red Oak									
Oak White Oak									
Oak Bur									
White Cedar	U								
Grasses	GC								
Red clover	GC								

1. GC = Ground Cover U = Understory sC = SubCanopy C = Canopy D = Dominant  
2. O = Open M = Moderate D = Dense

ALL WEATHER WRITING PAPER

Samsung Aug 2, 2011  
10 am. 10% cloud cover, wind 2-4

- Hedge row A - 12m wide, ~10m-12m high (semi-dec)
- green ash dominated, buckthorn
  - dense grasses - invasives timothy, Bromo grass, graminoid sp.
  - wild grape
  - Rubus sp - raspberry (black)
  - white ash, american blue oak, white oak
  - Goldenrod - S. canadensis
  - red-osier dogwood.
  - wild carrot, queen-Anne's lace
  - Carex sp. ; Virginia Creeper
  - Basswood, bitternut hickory
  - shagbark hickory, sugar maple
  - Vetch (cow), poison ivy, red clover
  - Hawthorn sp., wild strawberry
  - prickly ash, wild currant. (Ribes sp.)
- monarch, giant swallowtail
- small mammal burrow, possible bat roost in basswood
- BLJA, NOEL, TUVU
  - trees as high as 25m (oak)
  - hedgerow as wide as 15m

J. L. DARLING CORP. TACOMA, WA 98424-1017  
www.RiteInTheRain.com

No. 312

(1)

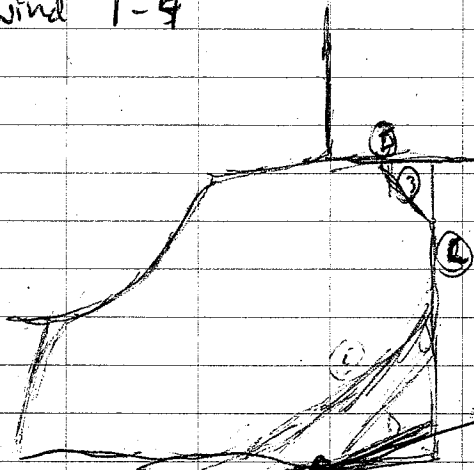
(A)

NLFR at rd.

August 3, 2011

06:30 - 17:00

100% overcast, light rain mid-day,  
wind 1-4



Picketal Frog

Debris pile wood + rock pile

B - Thick understory, 20m wide, 15-20m tall  
(Very dense)

C - 5-15m wide, cut in parts, 18-20m tall  
Small animal burrow, pathway.  
Moderate understory - seasonal drainage ditch

D - old wooden fence line - sparsely forest, 5m wide  
all areas 12-15m high, moderate - very thick/short understory

© 2000 Rainier Forest Products

August 3, 2011

J. L. DARLING CORP. TACOMA, WA 98424-1017  
www.RainierRain.com

No. 312

	①	②	③	④	E	F
American Elm	C	V	0	C	C	C
Red osier dogwood	U	V	0	U	U	U
wild grape	V	V		U		U
Green Ash	D, C, U	√U	√ 0	C(0)	C	C
prickly-ash	U					
white oak				√C		√R
Towering Aspen	C, D	√C	√			
Eastern red cedar			√-0	√		
Balsam poplar		U				U
white oak			√			
willow sp.		Dom.	√-0			
Canada goldenrod			√-0	√		
low velvet			√	√		
Narrow leaved greyhound			√-0			
juniper			√			
ragweed		√	√			
milkweed		√	√			
strawberry			√			
Spiraea			√			
E. cottonwood		√				
Buckthorn		√U		√	U	U
Queen-anne's lace				√		
virg creeper		√		√		
Black Oak				√		
Manitoba Maple				√		
Wild rose				√		U

(4)

→ monarch observed in fallow field.  
E - 6m wide - sporadic

Hedge row F - 3m wide x 20m high

- canopy exclusively Red Ash
- sub canopy - American Elm
- understory - buckthorn + r-o. dogwood.
- → slight to moderate.

Hedge row H

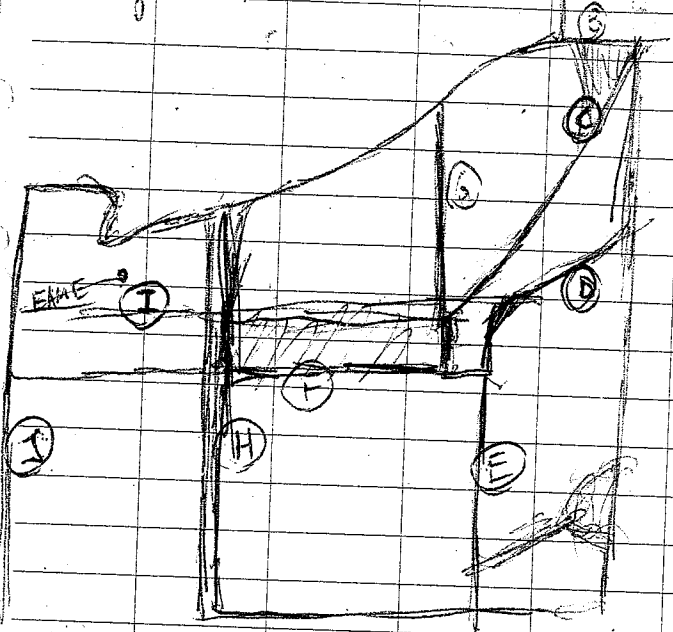
- old rd b/w 2 properties (house-fenced)
- rock "fence" along <sup>west</sup> length of rd.
- 15m wide, 10-19m high.
- Ironwood - lines inside edge of rd.
- few thin snags - unlikely to be root-site
- Red Ash is dominant canopy sp.
- Buckthorn is dominant understory sp.

Hedge row I - sporadic / thin / sparsely treed

- moderate understory (goldenrod dom.)
- Red Ash dom canopy
- 6-7m wide ~~xx~~ 10m tall, 15m
- S side is <sup>active</sup> soil field, N is plowed
- thin snags - cavity grasses
- Double hedge row

August 3, 2011

5



J. L. DARLING CORP. TACOMA, WA 98424-1017  
www.FitInTheRain.com

No. 312

Hedge row J - good corridor

- Dominant canopy species - Red Ash
- white ash, sugar maple (rare), basswood
- American elm
- understory - prickly-ash, red osier dogwood
- wild grape, junce grasses, buckthorn
- 10m wide

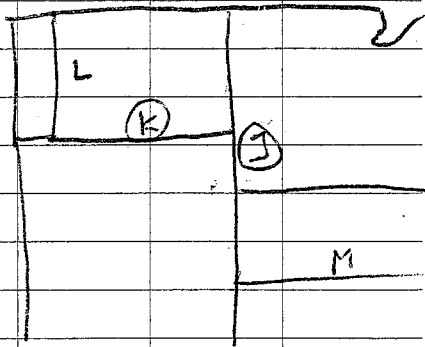


⑥

August 3, 2011

	H	I	K	L	M
wild grape	U		✓		U
wild raisin	U		✓		U
American Elm	sub C	U	C		✓ C
E. Buckthorn	U		U		
Red Ash	C	C	C	C	C
Virginia Creeper	U		✓		
Red-osier dogwood	U				U
Ironwood	west				
Sugar maple	U		U		
Basswood	C	C	C		
White oak	U				
Cottonwood	U				
Red oak	U				
Hawthorn	U	U	C		
goldenrod		GCover	GC		GC
Rubus allegh.		"			
<del>Bark</del> cherry		C			
Staghorn Sumac		U			
Queen Ann's lace		GC			
Bur oak			U		
Smartweed					GC
Apple					C
White Ash					C
Lilac	U				

August 3, 2011



Hedgerow K - 5m wide, sporadic - 5-18m tall  
- monarch caterpillars on milkweed  
- moderate understory

Hedgerow L - Red Ash dominated  
- open understory dominated by goldenrod.  
- 3m wide, 7-12m tall.

Hedgerow M - Red Ash dominated  
- open hedgerow  
- 15m tall, 3m wide.

(7)

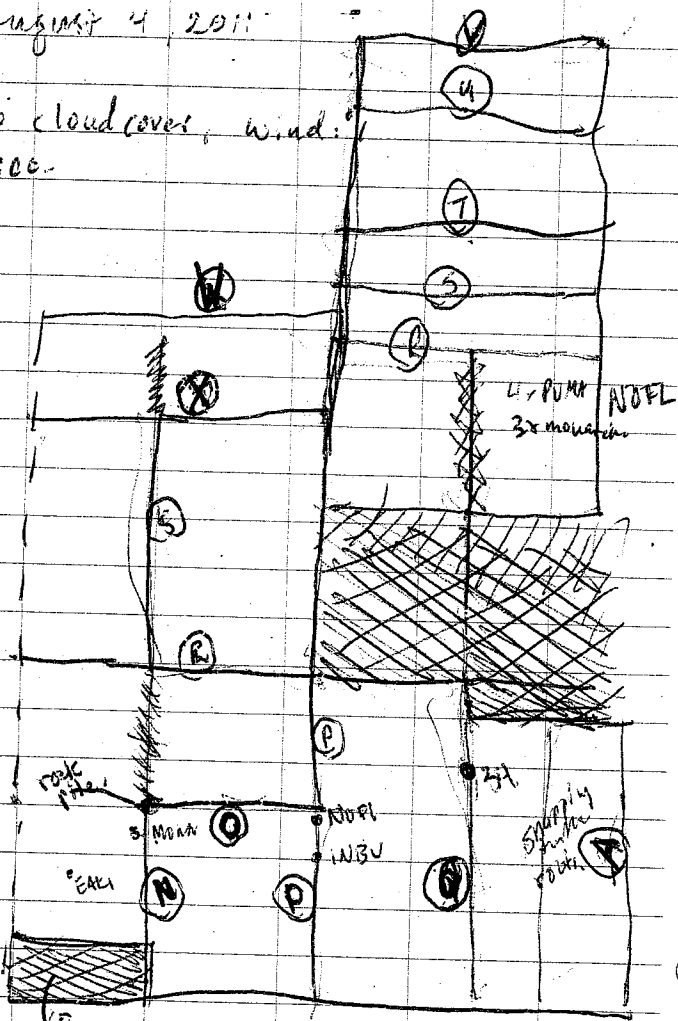
www.RiteintheRain.com

J. L. DARLING CORP. TACOMA, WA 98424-1017  
www.RiteintheRain.com

No. 312

August 4 2011

0% cloud cover, wind:  
07:00-



Feature B  
(woodlot)



(8) clouded sulphur.

ALWAYS WEATHER-PROOF

August 4, 2011

J. L. DARLING CORP. TACOMA, WA 98424-1017  
www.RiteInTheRain.com

No. 312

		E. WA									
		B	N	O	P	Q	(R)	S	T	U	V
GC	Milkweed	GC				U		U	U	U	U
GC	choke cherry	GC									
GC	Rubus sp	GC	GC	GC	GC	GC	GC	GC	GC	GC	GC
G	American Elm	C	U.C	C	C	SC	SC	ZC	UC	SC	
U	Wild Raisin	U	U	U				U	U	U	U
	Carex sp	GC									
C	Red Ash	CD	C	CD	VC	C	U	K	C	C	C
	Cow vetch	GC	GC						GC	GC	
U	Red osier dog	U	U	U	U	U		U		U	
	apple	C	C		SC	C					
U	wild grape	✓		U	U	U			U	U	
U	virginia creeper	✓			GC	U	GC		U	GC	
U	Hawthorn	U	U		U				U		
"C"	E Buckhorn	U	U	U	U	U	U	U	U	U	U
U	Bur Oak	C			SC	U					
	Shiny hick	C									
U	Thistle sp.	GC		GC					GC	GC	
E	Black cherry	U	U	GC	U				GC	GC	GC
	White Ash		U	C					U	U	
GC	Poison ivy	GC	GC		GC	GC	GC		GC	GC	GC
U	St. John's wort	GC	GC	GC							GC
	Plum sp		U								
	honeysuckle sp.			U		U					
E	sugar maple			U	U	SC	C	C	C	C	C
	Oxalis sp	GC			GC	GC					GC

Feature B (woodlot) - 12-15m tall

porcupine in Bur oak.

- Red Ash is low canopy sp. though  
shagbark hickory down at the east edge

Hedge row N - 8-13m wide, 10-12m

- few narrow snags
- American Elm dom canopy sp.
- veg density great at S end & patchy  
at N end (tapering)
- dense grasses
- ~~many~~

Hedge row O: 5-9m wide, 12-15m high.

- dense grasses
- hay bails along hedge row
- honeycreeper in berries being eaten  
by crows
- Red Ash dominated canopy
- moderate - dense cover



Hedgerow P - 15-20m high, 10m wide.  
- Oak dominated canopy  
- understory A. Elm, <sup>Chokeberry</sup> Cherry, oak, dogwood.

Hedgerow Q - 14m wide - rd. through middle  
- Great Spallowren, 1 snag.  
- turkey tracks, rock piles  
- 10-15m high, Red Ash down,  
- Am. Elm down sub, understory.

Down - Spoke w/ landowner John.  
- said he regularly saw  
snapping turtle travelling  
along sod field to road.

Hedgerow R - 10m wide, 15-20m tall.  
- snag.  
- large potential bat roosting cavity  
↳ basswood, 60cm, ~25m tall  
- cavity at 24 height; openings facing ERW  
- From 25m away - 31°

(12)

Hedge row S - <sup>small</sup> ~~rockpile~~ <sup>shaded</sup> - small mammal <sup>with snags</sup>  
 - hay bales along hedge row  
 - American Toad  
 - 8-15m wide, up to 20m  
 - monarch  
 - skinny snags at E end  
 (not suitable animal habitat (mammal))

Hedge row T - 8-12m wide - woodpecker <sup>noisy</sup>  
 - <sup>big</sup> ~~snags~~ <sup>cavities</sup> - too narrow <sup>for coats</sup>  
 - grey sq. <sup>mat. coast</sup>  
 - mammal bed (deer)  
 - mixed canopy - fairly broken  
 ↳ Red Ash, Basswood, Sugar maple

Monarch in Wild carrot field

Hedge row U: Ave. height ~15m, as high as 20m  
 = 10m wide.



- Visual post (small), with ladder
- cut wood.
- AMWD / Red Ash dominated

Hedgerow V. - 8-10 wide, 10-25m height  
(12 ave)

- Few snags - cavity.
- large snag w much loose bark, + large snag - no bird habitat

Hedgerow P (cont'd)

- ① - tall hazwood - potential bat roost  
~ 50m wide, 20m tall. (b/w T+U)
- ② - ~~hazwood - potential bat roost~~  
- HR opens up old Round Sones?

⑭



Hedge row W

- Dominated by Buckthorn  
↳ mostly ~ 5m high.
- Few taller Man. Maple + Am Elm  
(10-12m)

Start time 2:30-4:20

	AA	AD	AE
Apple	U		C
Red Ash	C	C	C
Red osier	U		U
Poison ivy	GL		GL
cow vetch	GL		
Buckthorn	U	U	U
lilac	U		
Bur oak	C	C	
American elm	C	C	C
Aralia nudicaulis	GL		
choke cherry	U		
Plum sp	U		
Wild grape	U	U	U
Red Pine	C		

(16)

ALL WEATHER FURNISHING OVER

J. L. DARLING CORP. TACOMA, WA 98424-1017  
www.RiteInTheRain.com

No. 312

	AA	AB	AE
Milkweed	✓		GC
wild Raisin	U		
Honeysuckle	U		U
<sup>sp.</sup> prickly-ash	U		
Virg. Creeper	GC		
E. Cottonwood	C		
E. Red-cedar "i"		C	
Common Juniper	GC		
Nightshade			
E. White-cedar	C		
Raspberry	GC	GC	
Basswood	GC		
<del>Hampden</del>	C	C	U
grasses			GC
Manitoba maple			U

(17)

- Hedgerow AA: width 3-4 sp., 12 high - 20m
- Canopy dom. by Red Ash, Am Elm.
  - Mourning Dove
  - Red-oxler dsm. understory.
  - drain with bullrushes

- Hedgerow AB
- ~ 12 trees - mostly Red Ash
  - Few Am Elm, couple of Hawthorn
  - patch of red-oxler dogwood.
  - max height - 18m - open understory.

- Fence Row AC
- ~ 10 well-spaced trees - mostly R. Ash
  - patches of r.o. dogwood, occasional Hawthorn.
  - am. elm.

- Hedgerow AD.
- Hawthorns adjacent to HR - 40 Sep For L-OSIA habitat.
  - monarchs
  - woodpile - old fence posts.
  - 4m max width, 4m - west half (AS2)
  - 8-15m - AD1 → just shrubs, w. ced.

(18)



Exposed Bedrock in middle of Field  
bordered by AA, AD

- potential snake hibernaculum
- old well - filled in with fence posts, rocks.

wpts 133-146.

Nest in Hawthorn

- sticks, wool, fine roots (mostly), grasses
- ↳ line
- ~ 20cm long.

- no mud used.
- 2 5m high in 3m Hawthorn

AE (Hedge row)

- 12m wide - 18m high
- many gaps in row ↳ ave 2-10m
- small wood piles.
- debris pile - snake basking site

Samsung

Aug 17, 2011

10:15

10% cloud cover, wind 2

Field F1:

- adjacent to shrubland.
- spoke to resident of area, said few deer in area.
- uncut hay field.
- old field in s. east corner.

F2:

- uncut hay field, 40cm tall Ash in field (5yr old)
- a little tall
- fairly contiguous with adjacent fields to N and S
- EAME habitat; EAKI
- bordered by fairly dense shrubby regeneration.
- Monarch seen in field, Gr. Swallowtail.

②

F3: Same as F2 - uncut hay field  
- good deer grazing habitat.

F5, F4: same as F2-F3

Barn at F5 - NE corner of field  
- potential BARS & EAPH  
nesting site.

F6 - meadow

- Monarch, G. Swallowtail, Praying Mantis
- W. Pine, ashes in meadow
- becomes open shrubland at north end.

F7 - uncut hay

- animal trail joining F6 to F7
- Tiger Swallowtail (Eastern)
- porcupine along W. hedgerow
- Viceroy, Monarch

F9 → Northern portion "newly" tilled.  
- pond/wet depression N of field  
↳ potential amphib. breeding pool.



F8: Small hayfield  
- hay cut this summer - bales in field.  
- wild Turkeys x2.

F9 - not tilled during bird surveys

F10 - Small~~est~~ tilled swath  
tilled after bird surveys.

F11 - Small field - cut hay (cut after breeding bird surveys)

F12 - Hay field at <sup>(SW)</sup> corner of  
Unity and Howes.

- Hay cut - after BBS.
- Island of Manitoba Maple which building had fallen (old chicken coop)  
↳ rock pile amongst rubble
- potential den under rockpile

F13 - Hay field - cut after BBS

- EANE
- E. red cedar growing in west portion

F14 - Hayfield

- regularly cut (apparently)
- Monarch

F15 - Old field

- E. red cedar, Ash, Milkweed
- tall grasses.
- Apparently uncut for few years.

Hayfield.

F16 - A few rounds cut along outer edge of field

- monarch

F17 - "Old" field, uncut

young juniper 1-1.5m tall.

F18 - Grass line - Dry yet wetland species. - uncut.

F19 - Hayfield - uncut for some time

- young juniper 50-60cm high.
- Monarch, G. Swallowtail.
- small grown-up patch of R.O. Dogwood, Rubus sp, and Red Ash.

F20 - Old Field adjacent to  
F19 - E. red-cedar + red ash  
up to 3m

F21 - old field - regem - Red Ash

F22 - Deciduous Regem - greater  
diversity + shrubby cover.

F23 - Uncut hayfield (small)

F24 - Small hayfield behind  
house. cut and bailed.

F25/ - ~~Small~~ Hayfield - only cut  
Feb. along edge - likely for  
vegetation passage.

Half cut - East side  
beyond <sup>half</sup> hedge row through  
it.

F27 - uncut field - some Red Ash  
~40cm tall.

F37 - Hay field - cut, round bails present

- bordered by woodland to the south and west,

F38 - smaller, fenced-in hay field

- contiguous with larger hay field to the N.

F39 - contiguous with F38

divided by ditch/swale  
- uncut hay

F40 - Hay field bordered to the west/  
NW by meadow marsh.

- Few outer rows cut, mostly uncut - unlikely to be cut again in 2019 as veg is mature.

F41 - Cow pasture

- currently used as grass is short.

F42: Juniper shrubland with occasional oaks

SSHA observed.

- Monarch

F43: uncut hay field

- left uncut for few years
- 2.5 m cottonwood, willow
- swale running E-W
- Monarch over adjacent sod field.
- Merlin flew over
- 2 cut portions at S of field

F44 cut hay.

F45: Pasture

- hummocky ground from cattle hoofs
- patches of exposed rock
- Wild carrot, goldenrod, penstemon, flower, aster dominated
- Only one Hawk Moth  
↳ Very limited LOSH habitat.
- Monarch Butterfly.
- Gray tree frog calling from woods to the S.

F46: Likely, uncut hay field  
wide tree along E hedgerow  
with large multi-opening cavity.

NOHA. - E. Quarter snake.

F48.  
- Stream with animal tracks.  
- G.S. Fritillary.

F49: Pasture - Few hay species

- Bordered by other open fields.

F50 - old field similar in composition to pasture in F49.

- No bordering fence.
- No young trees.

F51 - Sod

F52 - Old hay/pasture

EAME

- Few young trees up to 1.2 m tall
- E. red cedar, Trembling Aspen

F 55 - small pond<sup>1</sup> about 10x10m  
↳ Green Frogs and m. painted turtle

- 2nd small pond ~ 10x5m.  
↳ green frog

- Dried out to ~ half size

- possible pasture Area  
↳ cattle hoof-prints at pond bank

Pond - green frog - painted turtle.

F: 56 - old field.

F: 56: Inactive sod field  
- Dominated by Ragweed  
- BOBD (x 3-4) in N hedgerow



Patricia A. ...  
of ...

10%

Aug 19, 2011

F62 - Old regenerating pasture

- Horse pasture cut into  
landscapes -

- small patches of exposed  
rocks.

- old field bird species composition

EATD, COYE, HOWR, BCUH BARS, AMGC

- Monarch

EAEI

F63 -

15-20 BARS - young sitting  
on branches of dead tree adults  
foraging and feeding them.

J. L. DARLING CORP. TACOMA, WA 98424-1017  
www.RiteInTheRain.com

No. 312

①

Aug 19, 2011

- F67: - Pastureland - flat, hummocks from  
- PUMA (2x) overhead. <sup>leaf springs</sup>  
- UPSA habitat (one seen in June during  
BBS.

①



AS WEATHER WEATHERPAPER

J. L. DARLING CORP. TACOMA, WA 98424-1017  
www.FiteintheRain.com

No. 312

October 12-2011 - Samsung ①					
Rain / Orizzle					
	HE-5	HE-6	HE-7	HE-8	HE-20
W. Raisin	U				U
R cedar	U			U	
Strawberry	GC		GC	GC	GC
Rubus	GC				GC
Wh. Pine	C				
Buckham	U			SC/U	
R Oak	GC				
FRAX PEN	SC/C	SC/D	SC-D	SC	
Vib. rafin	U				U
R.O. Dog.	U			U	
cow vetch	GC/U	GC/U	U		
Viola sp.	GC				Elecampone <sup>U</sup>
choke cherry	U				U
Plantain	GC				Sugar Maple <sup>SC</sup>
R.F. Clague	GC				
Shrub sp.	U				
Narrow leaf Gd.	GC		GC		
Bar Oak	GC, U				SC
Hawthorn sp.	U				
Ribes sp.	U				U
W. Elm		SC/D		SC	C
Scirpus sp.	GC				
Ped. Osier		GC/U			
Staghorn Sumac					U, SC

②

HE-5

4.5m wide

Dense shrub understory - Dogwood, Ruckhous  
+ wild raisin

- Mammal trail through centre - connects
- 2 natural features
- No sig habs such as snags,  
rock piles, sizeable logs.
- Old wooden fence - has fallen down

HE-6 - swain/shallow drain through  
hayfield

- hay field partially cut
- 10m wide HR - grassy/open tree  
and shrubs → sedges
- wetland?
- Photos 30-46
- light path through HR. - Open understory
- Max 10 - average 7-8.

HE-7 Photos 47-49

moderate open understory - max 10m  
average 6m

- not a corridor - does not join nat. features
- no evidence of wildlife.

ALUMINUM

J. L. DARLING CORP. TACOMA, WA 98424-1017  
www.FitInTheRain.com

No. 312

	HE-6	HE-7	HE-8	HE-20
Willow sp	U	U		Can. Thistle Thistle sp. U
Tree-pewee	U			
Grasses	GC	GC-D	GC	
Curled bark	GC			
Aster sp	GC		GC	GC
Solidago	GC	GC	GC	GC
Purple loostima	GC			
Red clover	GC			
Cattail	U (few)			
Carex	GC			Prickly Ash SC
Poison ivy		GC		
Trem. sp		U/SC		
W. Aster		GC	GC	
Wild carrot		GC		GC
Cornus		GC		Boggy's Tree GC
Wild Plum?			SC	
↳ wild Raisin?				
Shrub sp.			SC	U
Black cherry			SC	
River Grape			U	U
Honeysuckle sp.			U	
Man. Maple			SC	
Meadow Rue			GC	
Bittersweet				C
W. Oak				SC

(3)

(4)

HE-8

- Max ht 12m
- Average ht 7-8m
- Dense → mod-dense understory
- grassy edges
- cherry, Ash, Man. Maple canopy  
↑ Dim
- No sig. wildlife habitat.
- Does not joint any nat. features.
- No wildlife obs.

HE-20 - Largely Sumac + Grass dominated

- moderate dense - open undercover
- Max height = 12m min = 1m
- average ht. 4-5m, 3-20 m wide
- abuts Highway, connects weakly to forest to the west.
- rubble rock throughout HR
- no other sig. nat. features
- no sp. SC. habitat, other than

- w. elm is primary tree species

		Samsung - Jan P										October 13, 2011	
		HE-9	10	11	12	13	14	15	16	17	18	19	
Common Jun.	U	U-D				GC	GC	GC					
Chokecherry	U	U	U	U	U	U	U	U	U	U		U	
Sugar Maple	<del>SC</del>		U/SC	<del>U/SC</del>	U							SC	
Red Cedar	U	SC	U	U	U			U	U	U	U/SC	SC	
Vib. cassin.	U		U		U	U	U			U	U		
Rubus	GC	GC	GC	GC	GC	GC/U	GC	GC	GC	GC	GC	GC	
Grasses	GC	GC	GC	GC	GC	GC	GC	GC	GC	GC	GC	GC	
Strawberry	GC	GC	GC	GC	GC		GC	GC	GC	GC			
Catnip	GC	GC				GC				GC			
Poison Ivy	GC				GC	U		GC		GC		GC	
Bur Oak	SC				SC		U					U	
Curly Dock	GC		GC	GC			GC	GC					
Buckthorn	U	U	U		U	U	U/SC	U	U	U	U/SC		
Red clover	GC	GC		GC	GC								
Dandelion	GC	GC	GC	GC		GC	GC		GC		GC		
FRAX PEN	SC		SC	SC	C	C	C	SC	SC	SC	SC	SC	
Wild Carrot	GC	GC	GC		GC			GC					
Cow Vetch	GC	GC		GC		GC	GC	GC	GC	GC			
R. F. Gingon	GC		GC			GC		GC	GC	GC			
Prickly Ash	GC				U		U		U		GC		
Burdock	GC												
W. Elm	SC	SC	SC	SC	U/SC	SC	U/SC	SC	SC	SC	SC		
Apple	SC	U			SC								
R.O. Dogwood	U		U	U		U	U/SC	U	U	U	U	U	

J. L. DARLING CORP. TACOMA, WA 98424-1017  
www.FilterInk.com

No. 312



HE-9 - Photos 57-60

- 4m wide, Max ht 10m, min 1m
- moderately-open/open understory
- largely grassy ground cover
- does not connect 2 natural features

- no amphib. habitat - log + rock piles
- av. ht. - 7.9m → prob snake nesting

HE-10 - Photos 61-64

- juniper dominated fence row
- av. ht. 1m - 3m wide, max 8m
- bc down by wild carrot + grass
- few shrubs + w. Elm
- ~~not~~ sig. wildlife corridor
- no sig features
- does not join 2 ~~nat.~~ features
- occasional Buckhorn + Red cedar.

HE-11 max width = 7m, min 1m  
max ht = 15m min ht = 0, open  
Photos 65-71

(2)

AS WA STATE UNIVERSITY

J. L. DARLING CORP. TACOMA, WA 98424-1017  
www.FillintheRain.com

No. 312

	9	10	11	12	13	14	15	16	17	18
Unknown shrub sp		U			U	U		U	U	
Willow Raisin		U		U	U					
Milkweed		GC				U		GC		
NE Aster		GC	GC			GC		GC	GC	GC
Aster sp		GC		GC	GC	GC	GC	GC		
B. Cherry			C							
S. latifolia			GC		GC					
Hawthorn			U			UKC	U	U		
Agrimonia			GC		GC		GC		GC	GC
River Bank grape			U	U	GC, SL	U	U	U		U
Spiraea alba				U						
<del>Sp.</del>			GC	GC					GC	GC GC
Rosa sp			<del>U</del> GC	GC		U	U			GC
Cattail				U						
Scirpus				U	GC					
Grass-leaved				GC						
Goldenrod					SC					
White Oak										
Viola sp					GC		*	<del>*</del>	*	
Solidago sp					GC	GC	GC	GC	GC	GC GC
<del>P.</del>					GC					
Black nutmeg					GC		GC			
Wild ginger					GC		*		*	
Basswood			GC, SL	<del>GC</del>						
Bittersweet			GC	<del>GC</del>						

(3)

HE-11C - <sup>sugar</sup> Maple dom. canopy - max 15m  
av. 12m high

- open under., sumacs, black cherry  
Vib. raf., Bitt. nut Hickory (c)

HE-12 - Photos 72-80

- ~~white~~ FRAX PEN dominated in 13 elm
- width - 5m, max ht. 12m
- average ht - 10m
- relatively dense understory
- channel (ephemeral) through middle
- Dogwood/spirea/tall grass dom. understory
- connects 2 large hedgerows
- no sp. sc.
- wet area to the south - likely  
via fluxes moisture levels.

HE-13 - Photos 81-83

- Max ht 15m high, average 10m, min - 10
- width - 3-5m
- Ash dominated

(4)

- Dense shrub understory - Dogwood + Buckthorn  
Dom.

Plants of the Pacific Northwest

J. L. DARLING CORP. TACOMA, WA 98424-1017  
www.RiteintheRain.com

No. 312

	11	12	13	14	15	16	17	18
Bitternut	U				SC	SC		
Staghorn Sumac						U		
Vetch sp.						GC		
Rubus alle.				U	U	GC	U	U
Common Lilac						<del>SC</del>	U	
Asparagus						U		
Ribes				U				
Man. Maple				SC			SC	
Honeysuckle				U	U			
Herb Robert					GC			
Com. Nettle					GC		GC	
Lobelia sp.							GC	
Black Cherry							SC	
Serviceberry?					SC			
Shagbark Hick.					SC			
Canada Bluejoint								GC/U
Carex sp.								GC
ML Viburnum								GC
mint-like sp.								GC
Sensitive Fern								GC
wood Fern?								GC
White Pine								SC

(5)

HE-13 cont'd

- NO sign of animal use
- no trails or channels
- no sp. SC. habitat or sig features
- joins 2 HRs.

HR-16 - narrow HR - width ~ 3-4m

- sporadic tree/shrub cover.
- dominated by grasses
- not sig. corridor - 1 snag w cavity
- photos 87-88
- NOT linking nat features
- abuts Howe's Rd.
- separates pasture + hay.

HE-14 - 3-7m wide

- channelled through middle
- few rubble piles
- partially wide open, partially densely covered by understory.
- open areas grassy, clo seed - not
- does not join nat features
- 1m deep ditch through HR

(6)

HE-15 - recent logging along fence row.

HE-15A - 6-7m wide, 6-15m high - 10ave.

- Dense Dogwood/Wild Lam Understory
- dense grassy edges
- channel through middle - great corridor
- small forest at S end. old field/wicket at west aspect.
- No sig habitat features.

HE-15-B - Hawthorn Buckthorn down

- Woodcock
- BHWI, SWSP

BECK, DOLB

HE-17 Photos 101-110.

- areas of dense understory, areas of open understory
- width 0-6m - 5 average
- Ash dominant tree
- Understory down by RD Dogwood + Buckthorn
- Bordering CUT on 2 sides
- Natural fissure in rock - snake hib?
- average ht - 7-8m - highest - 10m, low 0
- narrow channel through HE - animal trail present.

⑦

Jon P

ERC - Feature 20-G

Oct 13, 2011

- Fresh Moist Forest - Deciduous
- Ash Dominated up to 10m

(2-10m)

sub canopy: Ash >> w. Elm, Buckhorn - 70%

0.5-2m : R.O. Dogwood > Buckhorn > w. elm - 40%

0-0.5m : Grasses >> aster sp. > strawberry - 90%

- Table land

- <sup>little</sup> human disturbance, no logging.

- No sig. snags, vernal pools,

- Few non-natives - widespread.

wildlife - AMWD

- RUGR

(8)

Jon P.

Cloud cover 80-100% Precip. - little mist at start of Day.

Wind: 3

	1	2	3	4		1	2	3	4
FRAXIN	A-D →				Moss				A
W. Ash	A →				Grasses				A
Bur Oak		0			Aster Sp.				A
Buckhorn			A		mint-like sp. Pres				R
Rosier Dog.			A		* Violet sp				● A
Vib. rafin.			0		Strawberry				A
Haw Horn			R		Dandelion				0
Chokeberry			0		Agimonia				0
Maple-leaf virginian			R		Com. Juniper				0
					Rubus sp				A
					Prickly Ash				0
					Herb Robert				0
					NE Aster				0
					Rue-bark Group				A
					Solidago sp				A
					Carrot sp.				0
					Bittersweet				R
					Nightshade				0
					Wild Carrot				0
					Scirpus sp.				0
					Wild Rats			A	

9



HR-18

- wet depression - wpts 463-469
- Very dense dogwood/Viburnum understory with open canopy cover
- Wet depression likely amphib. breeding habitat
- NLFR seen, WCFR heard.
- max tree height 70m - average 7m
- No sp. SC habitat.
- No other sig. features.

HR-19

- max ht - 15m min ht 4m, aver. 7m - 4m west
- Dense understory of Buckthorn + Viburnum
- Broken canopy - mainly Ash (F. penn)
- grassy edges, yet no grass in ht.
- Deer scrapes on cedar?
- no evidence of avian usage
- No sp. SC habitat.
- no sig. nat. features.

⑩

Return to the Rain  
www.ReturntotheRain.com

J. L. DARLING CORP. TACOMA, WA 98424-1017  
www.ReturntotheRain.com

No. 312

Oct 13, 2011

10:45-11:05

Jan P

- Srike observed in area 20-north portion
- it flew along hedgerows, chased Starlings, and called.
- calls includes
  - ① Quick gargling twitters
  - ② Quick nasal magpie/jay-like calls
  - ③ Rasps.
- Overall shape agreed in Northern
- Observed at a distance for 20m-
- Dark overcast sky made observing plumage difficult.
- Very poor photos taken.
- way about 45° - BT 365605 4906766
- Scrubland + Hawthorn Hedgerow nearby, though Srike not seen using Hawthorns

11



	21	22	23	24	25	26	27	28	29	30
Strawberry	GC	GC	GC	GC		GC		GC	GC	
Milkweed	GC			GC					GC	
W. Elm	SC	SC	SC		C	SC	SC	SC	SC	*C
Chickory	GC									
Apple	SC	SC								
Yellow Wood-sorrel	GC									
"Goats beard"	GC									
<del>St. John's Wort</del>	GC				GC			GC	GC	
Black Snake-root		GC		GC						
Poison Ivy		GC		GC			GC			
Wild Raisin		U								
Bitternut Hick	C	SC	SC							
River Grape		SC		U		U		U		
Pinus sp.		SC								
Burdock		U								
Curled Dock		GC	GC	GC	GC		GC	GC		
Com. Juniper		GC	GC	U		U	U		U	
Moss sp.		GC	GC	GC						GC
Shrub sp.			U	U	U					
Shagbark Hick (C)			C							
Ironwood (B)			C							
Red Cedar			U	U			U		SC	
W. Oak			C				SC		SC	
Catnip			GC							

J. L. DARLING CORP. TACOMA, WA 98424-1017  
www.rhishornrain.com

ALWAYS USE RECYCLED PAPER

HE-21A Photos: 132, 139, 141, 142.

- Separates 2 sod fields
- channel in middle - 1.5m wide, 1m deep
  - ↳ wet, cattails - apparently dug out.
- Max height - 15m, min - 0, Av 10-12
- Elm, Ash main Tree species
- Dogwood dom. understory at Wedge
- Rubus dominates at Edge.
- Good mixture of groundcover
- wooden fence + rocks in HR.
- ~ 10m wide
- no sig. wildlife habitat, not connected to any natural features of note
- abuts roadway
- coyote scat. (see 21B)

HE-22 - Photos - 146

- FRAXPEN dominates canopy, some w. Elm.
- Grasses, asters + Rubus dominates groundcover
- moderately dense <sup>to open</sup> understory - R. once Dogwood
- 5m wide, average 10m high, 12m max
- No sign of wildlife
- No sig. hab. features, No sp. SC habitat.
- Does not join any nat. features.
- no water channels.

## HE-23A - Photo 143

- Patch of R-O. Dogwoods - 2.5m tall
- Strawberry, Rosa, Grasses, Rubus, 1 ~~tree~~ <sup>FRAX PEN</sup>
- ~ 10x10m
- No sig wildlife habitat, not attached to any natural features.

## HE-23B - Photo 144 - 145

- max ht 15m, Av. 10-12m - Hickory (Shag) + Basswood <sup>Dominated</sup>
- open understory
- 10-20m wide, ~ 180m long.
- Short HE - not connected to any nat. features
- No evidence of wildlife usage.
- No sig. hab. features.
- grasses + dogwood dominate understory.
- No sp. SC habitat.

## HE-24 - Photos 146 - 148

- sparsely covered HE.
- Primarily Grasses, R-O. Dogwood + C. Juniper
- occasional trees mostly FRAX PEN
- rock pile upon which Deer blind is built
- Max ht - 10m, av. ht. 2m, 5m width
- No sig. wildlife habitat features

HE-24 cont'd.

- borders hay field + meadow
- No signs of wildlife

HE-26 - Photos 150-159

- Fence row - open, sparse tree cover
- patches of dense dogwood + open grassy patches.
- Grasses + typical ground cover species dominate
- a <sup>mammal</sup> trail observed, no wildlife obs.
- very small <sup>maple</sup> forest at E. end
- Only 1-3m wide, 10m max height
- 2m average ht.
- no sig. wildlife hab. features present
- no sp. SC habitat.

HE-27 Photos: 150-155

- max tree ht 10m, av ~ 8m, 15m wide
- animal trails across HR and along.
- shrub dominated HR - P-O dogwood.
- Ash + elm dom. tree species.
- grasses line edges + asters sp., Rubus

October 24, 2011

Im P

Samsung

HE-28. Photos 162-168

- Primarily a grassy wooden fence-row.
- some patches of moderately dense dogwood.
- Few larger white elms, trees generally sparse
- 1-3 m wide - 15m at tallest, average 1.5m or 10m
- No wildlife habitat within, does not connect natural features.
- no sp. SC habitat.
- Perching for winter raptors / SEOW

HE-29-B Photos 169-170

- Separates <sup>adjunct</sup> pasture from old hayfields
- wooden fence-row with patchy (mod-dense) dogwood and hickory.
- Trees are regularly spaced and are somewhat sparse
- grasses + forbs dominate
- little cover greater than surrounding lands
- one large cavity snag at S tip.  
(see pic from previous trips)

①



## HE-27 cont'd

- No sig wildlife habitat
- No connected natural features
- likely used as a corridor, but not a sign. <sup>ow.</sup>
- no sp. SC habitat

## HE-25 photo 156-

- max ht - 15m min 2m, av. 8m 5-6m wide
- Dense shrubbery in understory - (RO Dogwood + Buckthorn)
- Rubus & grass/aster sp. dom. in open areas.
- meadow vole, WCSP, BICH, PCKI
- No sig wildlife habitat.
- No connected nat. features.

## HE-21-B photos:

- small snagged Hickory / Ironwood Forest - similar to 23.
- open understory, grassy ground cover.
- no sig. wildlife habitat. Features
- no sp. SC habitat.
- max ht 20m, ave 15m
- 100m x 20m size.
- no wildlife observed

→ suitable perching for SEOW/winter raptor

- more suitable as perches for birds than as a corridor
- Ash and elm are dom. tree sp.
- av. 1-2 m wide - tallest: 12m 4m average.

HE-29A

- wooden fence row
- tallest tree 15m, ave. 8-10
- generally open understory; few patches of moderately dense.
- grassy ground cover
- elm, ash dominant tree species
- does not connect to nat features.
- dug out channel crosses at one pt.   
 → cattails to the east of HR.
- 1 cavity snag dbh ~ 40cm
- no other sig. hab. features.
- divides <sup>active</sup> sod field and inactive, overgrown sod field.
- potential perching habitat for SEOW/winter raptors

③

waypoint 491.

Nest in Hawthorn - RT 368109, 490777

- 1m high in 2.5m tree
- twig nest with leaves lined w few grasses
- relatively new (last 2 seasons)
- Photos 179-184.
- Hedgerow 31
- Tree standing alone bordered by 2 sod fields.

HE-31 Photos.

- Narrow drain/ditch, Half is accompanied by HR.
- HR portions are open, patches of moderately dense shrubbery.
- Patch of Hawthorn at n. end.
- stand alone <sup>Hawthorn</sup> tree in nest (see above)
- 12m at tallest, 7m aw.
- grassy edges
- 
- No other sig. wild. hab. Features
- 2.5m wide
- Divides sod fields.

⑤

## HE-32. Photos: 190-197

- Man-made Ditch - trend on E side.
- trees dom. Ash, few small elm
- Max ht 12m, ave = 10m, 10m wide
- Tree veg spaced, dogwood.
- open to moderate understory cover
- grasses, dominate ground cover, aster, alfalfa, cinquefoil
- Ditch 1.5m x 1m
- no sig. hab. features
- Good perching hab for raptors.
- no connecting wet. features
- Separates sod fields.

## HE-33 - Photo 198

- 10m<sup>tall</sup> FRAX PEN thicket
- tall grass g cover, patches of moderate density R.O. dogwood.
- separates wet, meadow marshy ecosite from old hay field.
- raptor perching habitat
- connects to forest at S.
- no sig.  $\rightarrow$  habi features
- like others no cover advantages compared to surrounding lands.

④

HE-30 Photos. 174, 175, 199

- Max/Ave Ht - 10m - all Ashes
- Grassy ground cover - little understory
- wooden fence row
- no sig. hab. features
- not connected to and nat. features
- no SAR habitat.
- borders apparent remains of old building (homestead?)

HE-34 Photos 200-208

- Max 13m, Ave ht. 10m - FRAX PEN
- moderately ~~dense~~ understory 3-4m wide
- ↳ R.O. Dogwood is buckthorn
- Aster, grasses, dominate gc.
- no significance,

HE-35

- 3m - 10m wide - 5 ave. max 17, ave 12m
- overall <sup>low</sup> ~~moderate~~ understory cover
- patches of Dogwood
- relatively diverse tree cover. Predom. Ash
- 5 end perhaps forest remnant Oak.  
as forest species present (in blu-beech)

(5)

HE-35

- Areas of open grass, oak canopy with grassy groundcover
- areas of tree cover + forest groundcover in violet sp, snake root, etc
- No sig. hab features
- Discontinuous cover suggests poor corridor
- no evidence of wildlife usage

Oct. 14, 2011

50% cloud, Wind 5-6<sup>+</sup>, 0 precip.

	31	32	34	35
Grasses	GC	GC	GC	GC
w. Elm	SC	SC		SC
FRAX PEN	C	D(-)	C(0)	SC/L
Rubus alle	U		U	
Solidago	GC	GC	GC	
Beckthorn	SC	SC	U	U/R
Wild Camot	GC	GC	GC	GC
Low Vetch	GC	GC	GC	GC
NE Aster	GC	GC		
Dandelion	GC	GC	GC	
Hawthorn	SC	SC	SC	SC
RO Doge	U	U	U	U
Bullthistle	U			
Rosa sp	GC			U
E. Red cedar	U		SC	
Prickly Ash	U			
Milkweed	GC	GC	GC	
Spiraea alba	U	U		
Stag. Sumac	U			
Cattails	U			
Vib. Faf.	U			U
Alfalfa	GC	GC		
Shrub sp		U		U
Strawberry	GC	GC	GC	GC

	32	34	35
Bur Oak	SL		Ux
Red Clover	GL		
Chokecherry	U	U	
Rubus sp.	GL		
Canada Thistle	U		
Riverbank Grange	U		U
Mullein	U		
Curled Dock	U	U	U
R. F. cinque	GL		
Thistle sp.	GL		
* - Three leaved Shrubby cinquefoil	GL		
Moss sp.	GL		GL
Grass leaved <sup>Golden</sup> <del>grass</del>	GL		GL
Large Thistle		U	
Poison Ivy		GL	
Aster sp.	GL	GL	GL
Wheat		GL	GL
Alon		GL	GL
Elecampane		U	<del>GL</del>
Carex <del>sp.</del>			GL
Tarrow			GL
Viola sp*			GL
Beggars Tick			GL <del>GL</del>

No. 312

J. L. DARLING CORP. TACOMA, WA 98424-1017  
www.fishintheRain.com

ALL OTHERS ARE THE PROPERTY OF J. L. DARLING CORP.



35

Unid sp. Photo

( Trem Asp. SC

Blue-beech SC

Salix sp. SC

( Black Sycamore GC

Ribes sp. W

Agrostis GC

( W. Oak GC

Basswood C

"Coats band" GC

Oct 19, 2011

Jon P.

# Hedgerow Evaluation

## Animal Movement Corridors



AMEC Earth & Environmental  
160 Traders Blvd East, Mississauga, ON L4Z  
3K7  
Tel: (905) 668-2929

Feature Name: HE-36 (✓)

### Signs of Animal Usage?

- Faint narrow trail through denser portions of HR
  - No sig. habitat features
  - woodpecker holes on broken off, 2m tall, snag. - 1 snag. no cavities.
- Relative size compared to other potential corridors
- narrow, short

### Presence of contiguous features

- ends at Unity + at alvar/meadow area ∴ no continuity.

### Are there known or potential seasonal concentration habitats nearby?

### Does the corridor link ANSIs or wetlands?

No

### Are species of conservation concern present or possible?

- Piches for grassland birds
- Hawthorns occur along HR.

### Do roads cross the corridor?

Yes - fallow old field across rd.

### What human activities occur in adjacent lands?

Hay field to the east - old field to the west.

### Other Notes:

- Varying height.
- Wooden fence

# Hedgerow Evaluation

## Animal Movement Corridors



AMEC Earth & Environmental  
160 Traders Blvd East, Mississauga, ON L4Z  
3K7  
Tel: (905) 568-2929

Feature Name: HE-8637

### Signs of Animal Usage?

- Wilson's Snipe.
- faint mammal trail.

### Relative size compared to other potential corridors

Fairly wide yet with open understory - grassy ground cover.

### Presence of contiguous features

Yes - Forest to the west + dug-out to surrounding HRS to the east.

### Are there known or potential seasonal concentration habitats nearby?

### Does the corridor link ANSIs or wetlands?

No.

### Are species of conservation concern present or possible?

### Do roads cross the corridor?

No.

### What human activities occur in adjacent lands?

Old hay fields - not used in several years

### Other Notes:

- Exposed + cracked bedrock = basking areas for snakes
- Relatively large width would provide migration passage for songbirds.
- Wet depressions near cracked rock perhaps suitable amphibian movement corridor b/w dugout + forest.

# Hedgerow Evaluation

## Animal Movement Corridors



AMEC Earth & Environmental  
160 Traders Blvd East, Mississauga, ON L4Z  
3K7  
Tel: (905) 568-2929

Feature Name: HE-48

### Signs of Animal Usage?

None

### Relative size compared to other potential corridors

Thin - very open understory

### Presence of contiguous features

No. - understory too open - though HR does meet mixed forest to the west (other HR to the E)

### Are there known or potential seasonal concentration habitats nearby?

No

### Does the corridor link ANSIs or wetlands?

No

### Are species of conservation concern present or possible?

### Do roads cross the corridor?

No

### What human activities occur in adjacent lands?

Unused agri. fields - Hay

### Other Notes:

- Very open understory
- 1 broken snag (Trembling Aspen) - no markings
- No sig. wildlife habitat features.

#  
OCTOBER 19/2011

E.D.

H.E. #38

HEDGEROW EVALUATION

RED CEDAR

Sc

BUCKTHORN SP.

Sc ← most common

AMERICAN ELM

Sc

GRASSES (incl. Timothy)

U

HONEYSUCKLE SP.

U

MAX HT 15-20m

MIN HT 5m

AVG HT 8m

DENSITY OF UNDERSTORY - Low

- can easily  
see through the row  
- not very dense

LENGTH (WIDTH) - 4-5m

H.E. # 39

RED CEDAR	Sc	- DOMINANT ALONG ONE EDGE (DRIER EDGE)
AMERICAN ELM	C	- DOMINANT ALONG WETTER EDGE (ALONGSIDE)
ALFALFA	6C	(WOOL GRASS)
WOOL GRASS	U	
BIRDS FOOT TREFOIL	6C	

MAX HT - 16.0m

MIN HT - 2.0m

AUG HT - 4.0m

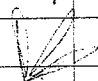
DENS OF UNDERSTORY - LOW

- VERY WIDE ROW
- SPARSELY OCCUPIED BY UNDERSTORY
- WIDE + OPEN

WIDTH - ~15.0m

OCT 19/2011 - E.D.

H.E. #40.

- C EASTERN <sup>U AND</sup> WHITE CEDAR - SC/DOMINATE  
OTHERS INCLUDE: SPECIES IN ROW
- C AMERICAN ELM - C  
VARIOUS GRASSES - GC. <sup>seed pod</sup>  
BIRD'S FOOT TREFOIL - GC. 
- C ASTER SP. <sup>60</sup> leaves  
(NEWENGLAND?) - U

MAX HT - 20.0m

MIN HT - 0.50m

AVG HT - ~ 10m

UNDERSTORY DENSITY - MODERATE IN SPOTS

- C WHERE YOUNG WHITE CEDARS ARE  
LOW in random SPOTS
- C WHERE LOW # OF YOUNG CEDARS.

WIDTH - ~ 20.0m

C

7

H.E. # 4

TREMBLING ASPEN - C

BUCKHORN SP. - SC

GREY DOGWOOD - U

- LARGE PATCHES OF DOGWOOD DOMINANT

AMERICAN ELM - SC

GRASSES SP + BIRDS FOOT TREFOIL - GC

(i.e. TIMOTHY)

MAX HT - 15.0m

MIN HT - 2.0m

AVG HT - 5.0m

UNDERST. DENSITY - MOD

WIDTH - 6.0m



Samsung

October 19

Northern Shrike.

- observed at 08:30 by Jon P +  
Elin O from 100m away.

- calling from top of 15m tree  
- Proportions like a NOSH, calls of  
NOSH + tail bobbing.

HE-38

- Row of shrubs - primarily buckthorn  
- short in length, 4-5m wide  
- borders artificial dugout + meadow  
- no snags, vernal pools, etc

Dug out pond.

- painted turtle, green frogs observed  
in previous visits

- Potential snapping turtle hab.  
- cattails on E bank.

E-39

Ash HR. - Lower along HR

Rubrushes - marshy

- to the S - driver strip

w tall grasses + E. Red cedars.

- altogether - confluence b/w Fields to the N and S.

→ same ELC

HE-40

no fowl

- Half white cedars, half fence row

- <sup>small</sup> clumps of cedars, without AC

underneath, few junipers around clumps

- Half marshy - sparse oaks - no

understorey - transition from meadow

- trail of smaller/wild sized mammal <sup>to above</sup>

- cedar stands may provide SEOW habitat.

- Perhaps lump cedars into alvar

- HE-41 - North end - scirpus  
 marsh/meadow marsh  
 - ephemeral pool at 534 (wpt  
 + photo  
 - 25m long + 4m wide  
 - amphibian corridor?  
 Overall - open centre of hedgerow <sup>can</sup> <sup>see on</sup> <sup>map.</sup>  
 - Fall well worn mammal  
 trail through centre

### Meadow

- Mixed - grass dominated  
 - Bird's Foot aster (NE)  
 - few thistles, timothy, solidago  
 - wild carrot, strawberry, potuliki  
 - narrow, ~~young dogwood~~ <sup>recta.</sup> (F.O.)  
 - anemone? vetch  
 - narrow (grass) - lowed goldenrod

HE-42

- south portion - <sup>moderate</sup> open understory
- <sup>frax</sup> Few snags

- no signs of wildlife.

- connects to forest at the S.

- wooden fence along row

- Varied along its length - never does dense

- unsuitable for amphibians, door wide portions occur

HE-45 - wooden fence row - 1.2 m wide

- overall very open + continuous

w/ bordering meadows

- sporadic patches of dogwood

Buckhorn, wild cherry

- Few FRAX YEN at E side

- No sig wildlife hab. features

- No wildlife observed

- No connection of nat. features

OCT 19/2011 E.D.

H.E. #42

( BUCKTHORN - Sc ) } Row DOMINATED BY  
GREY DOGWOOD - U } ROW OF BUCKTHORN  
BLACK RASPBERRY } + SHORTER GREY  
DOGWOOD ALONGSIDE  
OF BUCKTHORN

( ~~RUBUS OCCIDENTALIS~~ )

AMERICAN ELM - C

BULL THISTLE - U

( ASTER spp - U

GRASS spp - U + C

MAX HT (m) - 18-20.0m

MIN HT (m) - 1.0m

AVG HT (m) - 6.0m

UNDERSTORY DENSITY - HIGH

WIDTH (m) - 10.0m

C

C

C

H.E. #47

ULMUS AMERICANA - Jd

QUERCUS MACROCARPA - C

FRAXINUS PENNSYLVANICA - Sc

ASTER SPP. - U

GRASS SPP. - bc

MAX HT (m) - 15.0m

MIN HT (m) - 1.5m

AVG HT (m) - 5.0m

UNDERSTORY DENSITY - LOW - wide +  
quite open  
hedgerow

WIDTH (m) - 15.0m

HE-43 - occasional trees - max 15m

- ave. 7m - 6m wide

- Ash, elm

- open understory - patches of ~~o-d.~~ <sup>o-d.</sup> dogwood

+ Bluejoint grass

- grasses dominate row

- Few goldensrod + wild carrot + bull thistle

HE-44

- grassy swath with <sup>small</sup> patches of red-osier dogwood

- good habitat and passage area for sparrows, migrating birds

- 15m wide - mostly 3m and under in ht - few ash tree, couple elms

- few buckthorn, ele campagne

- rubble piles - old farm machinery

- no SAR habitat, no connectivity to other forested areas or nat.

features - no big wildlife features.

HE-46

- patches of dense understory - dogwood dominated.
- patches of open understory
- elms most common, FRAX PEN, Blw Oak.
- Golden rods, grasses, "bluejoints" common in ground layer
- other typical species
- wooden fence line
- no wildlife observed, NO sig features
- 4 m wide, ave 7 m tall, 17 m max

HE-47

- North end - ~~rough~~ forest remnant
- Ash dominated, Few oak (black) + trembling Aspen
- midway few trees - exposed bedrock + boulders, rubble
- overall - ave/max ht = 12-15 m
- mostly grassy ground layer + open + moderately open understory
- 20 m wide - ~~connects to forest south~~
- no connections to natural features
- surrounded by cultural meadow + pasture



Site 1 Poly R.

- Old Hayfield
- E. Red Cedar - up to 1m
- Dom. Grass sp. A.
- Grass species B.
- Sporadic Asters + Goldenrods
- Rubus, Dandelion.
- Cinquefoil
- NE Aster

Site 1 Polygon 3P 17

- Woodland?
- Grassy w shrubs and trees
  - Ash + Elm
  - Patches of Prickly Ash
  - Sumac, Rubus amongst grassy matrix
  - Grass C dominant
  - Shallow soils
  - More thicket than other
  - Red Cedars sporadic

Oct 19, 2011

HE-47 - rocky area - snake nesting  
habitat - woodpile

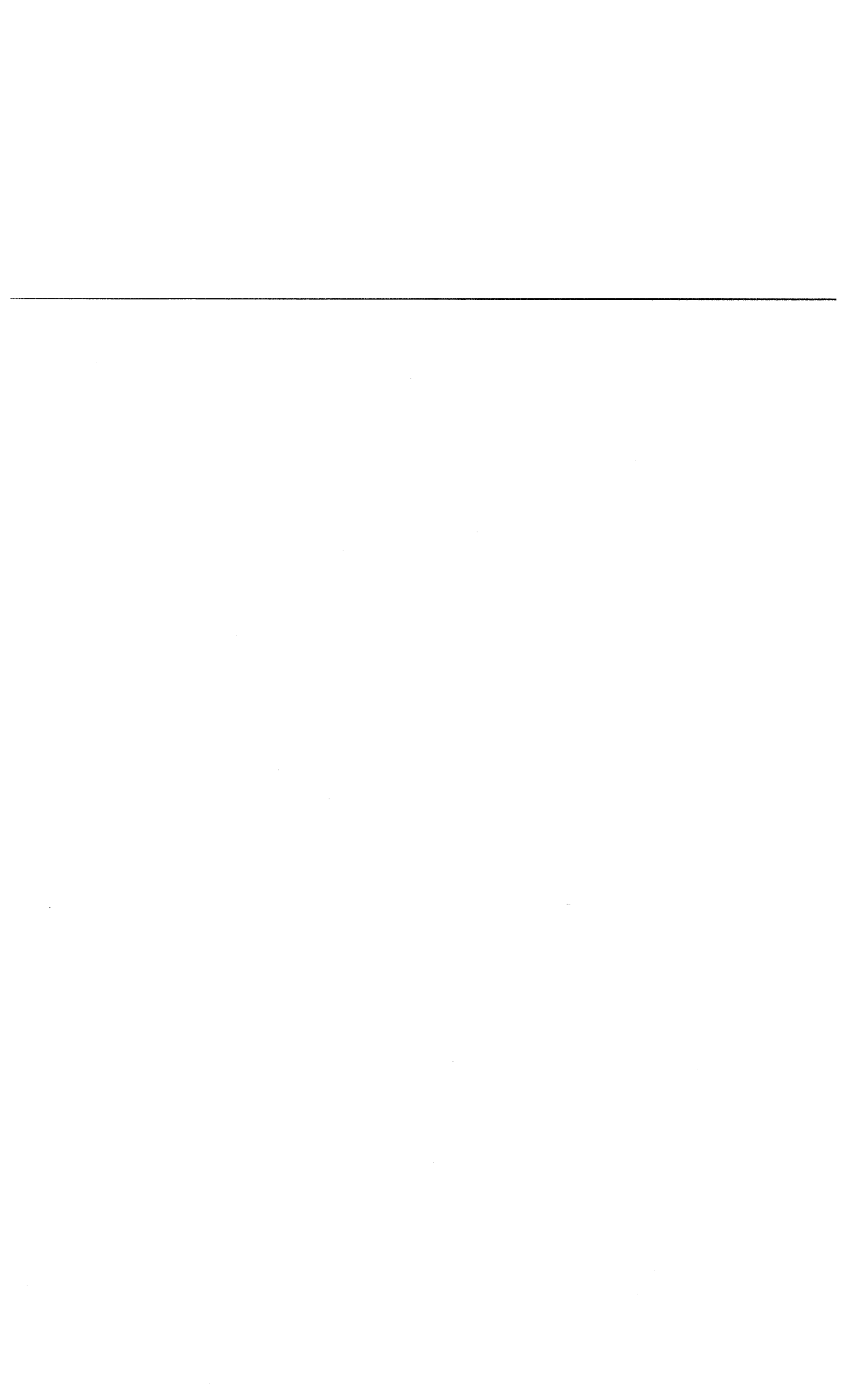
Polygon 14B-2

- Drainage area - wet meadow
- Soil has been washed away in localized areas to form channels over bedrock.
- wide variety of grasses throughout
- patches of mixed grasses/forbs, patches of bluejoint, patches of sedges
- cattails
- Moist Graminoid Meadow site
- sporadic small trees - mostly FRAX PEN
- NOHA <sup>nesting</sup> habitat - winter raptor <sup>nesting</sup> habitat.
- Few willows.

AT WEATHERMOUNTAIN

J. L. DARLING CORP. TACOMA, WA 98124-1017  
www.RainInTheRain.com

No. 312



# Hedgerow Evaluation

## Animal Movement Corridors



AMEC Earth & Environmental  
160 Traders Blvd East, Mississauga, ON L4Z  
3K7  
Tel: (905) 568-2929

Feature Name: HE-1

1

Signs of Animal Usage?

None - very little understory - no real cover for animal passage

Relative size compared to other potential corridors

greater than <sup>the</sup> meadow it divides

Very Small

Presence of contiguous features

No

Are there known or potential seasonal concentration habitats nearby?

Does the corridor link ANSIs or wetlands?

No

Are species of conservation concern present or possible?

No

Do roads cross the corridor?

No

What human activities occur in adjacent lands?

Old Barn/Shed at N. end, fence row along HR

Other Notes:

Photo 1.

↳ Basically a treed fence row.

# Hedgerow Evaluation

## Animal Movement Corridors



AMEC Earth & Environmental  
160 Traders Blvd East, Mississauga, ON L4Z  
3K7  
Tel: (905) 568-2929

Feature Name: HE-2

### Signs of Animal Usage?

- Patted-down grass in drainage ditch
- Cottontail Rabbit

### Relative size compared to other potential corridors

Wide

### Presence of contiguous features

Thicket to the East

### Are there known or potential seasonal concentration habitats nearby?

### Does the corridor link ANSIs or wetlands?

No

### Are species of conservation concern present or possible?

### Do roads cross the corridor?

No

### What human activities occur in adjacent lands?

Horse Paddock to the west

### Other Notes:

- Seasonal drainage channel within ~~Feature~~ hedgerow
- Photos 2-6

# Hedgerow Evaluation

## Animal Movement Corridors



AMEC Earth & Environmental  
160 Traders Blvd East, Mississauga, ON L4Z  
3K7  
Tel: (905) 568-2929

Feature Name: HE-3

### Signs of Animal Usage?

Few trampled trails nearby

### Relative size compared to other potential corridors

Narrow - sparse cover along E. half

### Presence of contiguous features

No - corner of shrubland to W, cultural thicket to the E,  
→ sparse hedgerow yet old field probably acts as contiguous habitat  
for many species.

### Are there known or potential seasonal concentration habitats nearby?

### Does the corridor link ANSIs or wetlands?

No

### Are species of conservation concern present or possible?

No -

### Do roads cross the corridor?

No

### What human activities occur in adjacent lands?

Horse paddock to the W

### Other Notes:

Photos 9-10

# Hedgerow Evaluation

## Animal Movement Corridors



AMEC Earth & Environmental  
160 Traders Blvd East, Mississauga, ON L4Z  
3K7  
Tel: (905) 568-2929

Feature Name: HEA

likely Animal Corridor  
(candidate)

### Signs of Animal Usage?

Yes clear trail through seasonal channel

### Relative size compared to other potential corridors

### Presence of contiguous features

Yes.

### Are there known or potential seasonal concentration habitats nearby?

### Does the corridor link ANSIs or wetlands?

No

### Are species of conservation concern present or possible?

GOUNA heard in thicket lands to the west of HR during breeding  
bird season.

### Do roads cross the corridor?

No

### What human activities occur in adjacent lands?

None - Old fields separated by HR

### Other Notes:

Photos 11-14

Ephemeral Drains channel through HR.

# Hedgerow Evaluation

## Animal Movement Corridors



AMEC Earth & Environmental  
160 Traders Blvd East, Mississauga, ON L4Z  
3K7  
Tel: (905) 568-2929

Feature Name: HE-5

Signs of Animal Usage?

Relative size compared to other potential corridors

Presence of contiguous features

Are there known or potential seasonal concentration habitats nearby?

Does the corridor link ANSIs or wetlands?

Are species of conservation concern present or possible?

Do roads cross the corridor?

What human activities occur in adjacent lands?

Other Notes:

- Sparse HR - Elm "Dominant"
- Mostly Shrub sp.



# Hedgerow Evaluation

## Animal Movement Corridors



AMEC Earth & Environmental  
160 Traders Blvd East, Mississauga, ON L4Z  
3K7  
Tel: (905) 568-2929

Feature Name: \_\_\_\_\_

Signs of Animal Usage?

Relative size compared to other potential corridors

Presence of contiguous features

Are there known or potential seasonal concentration habitats nearby?

Does the corridor link ANSIs or wetlands?

Are species of conservation concern present or possible?

Do roads cross the corridor?

What human activities occur in adjacent lands?

Other Notes:

## SAMSUNG SOLAR - KINGSTON

15-JUN-11

- AMPHIBSTAN +

START: 9:25

CREPUSCULAR DARK

JEFF BOSSARD + TRACY  
SHUTE

SURVEY

T = W = 1 C = 0 P = 1

FULL MOON

~~AMPHIBSTAN~~

① 9:25 - GTR - 3 - NO CREPS

- GPS #101

② 9:40 - GTR - 3 - NO CREPS

- GPS #102

③ 9:50 - GTR - 3 - NO CREPS

GPS #103

④ 9:59 - GTR - 3 - NO CREPS

GPS #104

⑤ 10:09 - GTR - 3 - NO CREPS

WOFR - 1-1

- GPS #105

⑥ 10:20 - GTR - 3

GPS #106

⑦ 10:30 - GTR - 3 - NO CREPS

GPS #107

⑧ 10:39 - GTR - 3 - NO CREPS

GPS #108

CONTINUED ... JUNE 15, 2011

9 10:48 - GTR 3 - NO CREPS  
GPS # 109

10 11:00 - GTR-3 - NO CREPS  
GPS # 110

11 11:09 - GTR-3 - NO CREPS  
GPS # 111

12 11:22 - GTR-3 - ~~NO CREPS~~  
BULL-1-1 - ~~NO CREPS~~ 1 WPWI  
GPS # 112  
WOFB-2-4-5 (VERY DISTANT)

13 11:31 - GTR-3  
BULL-1-1 - 2 WPWI  
~~GPS # 113~~  
GPS # 113

14 11:42 - GTR-3 - 2 WPWI  
BULL-1-1  
GPS # 114

15 11:51 - GTR-3 - 1 WPWI  
GPS # 115

~~GPS # 116~~

- TRIANGULATED AND PROVIDED ON  
MAP THE ESTIMATED AREAS HEARD

SATURN SOLAR - KINGSTON

16 - JUN - 11 JEFF B + TROOP 3.

AMPHIB. + CREPUSCULAR PING SWAY

T - W 1.2 C 506 P 1

16 9:28 - GTR-3 - 1 AMWO  
GPS # 116

17 9:38 - GTR-3 - NO CREPS  
GPS # 117  
GPS # 111

18 9:56 - GTR-3 - NO CREPS  
GTR-3  
GPS # 118

19 10:04 - GTR-3 - NO CREPS  
GPS # ~~119~~ 120

20 10:12 - GTR-3 - NO CREPS  
GTR-2 (6-7)  
GPS # 119

21 10:24 - GTR-3 - NO CREPS  
GPS # 121

22 10:34 - GPS # 122  
GTR-3 - 1 AMWO  
GPS # 1-1

23 10:45 - GTR-3 - NO CREPS  
GPS # 123

24 10:55 - GTR-3  
GPS # 124

June 16/2011 - NIGHT SURVEYS  
CONTINUED

(25) 11:07 - GTR-3 - 1 WPWT  
GPS # 125 (see map)

(26) 11:20 - GTR-3 - NO CREPS  
GPS # 126

(27) 11:29 - GTR-3 - NO CREPS  
WORK - (4)

DONE - 11:35

Site: KINGSTON, ON

Observer (s): S. MOHAMMED

Date: NOV

Field No: 20 Wetland Type: hts Site Type: P Dominant Form: h

% Open Water: \_\_\_\_\_ Water Depth (cm): 35 Depth of Organics (cm): \_\_\_\_\_

Soil: A \_\_\_\_\_ Depth to Mottles (cm): \_\_\_\_\_ Gley (cm): \_\_\_\_\_

B \_\_\_\_\_ Depth to Mottles (cm): \_\_\_\_\_ Gley (cm): \_\_\_\_\_

Presence of Seepage:  <sup>N</sup> Presence of Iron Precipitates:  <sup>N</sup>

Forms % (Circle those ≥25%) Species (dominant species<sup>1</sup>, secondary species<sup>2</sup>, present species<sup>3</sup>)

(h) Acer x francanii, Ulmus americana

c \_\_\_\_\_

dc, dh, ds \_\_\_\_\_

ts Cornus stolonifera

ls \_\_\_\_\_

gc \_\_\_\_\_

ne Poa palustris, Phalaris arundinacea

be \_\_\_\_\_

re \_\_\_\_\_

ff \_\_\_\_\_

f \_\_\_\_\_

su \_\_\_\_\_

m \_\_\_\_\_

Rare Species (Local, Regional, Provincial): \_\_\_\_\_ Wildlife Notes: \_\_\_\_\_

\_\_\_\_\_

\_\_\_\_\_

\_\_\_\_\_

\_\_\_\_\_

\_\_\_\_\_

Field No: 20 Wetland Type: \_\_\_\_\_ Site Type: P Dominant Form: h

% Open Water: \_\_\_\_\_ Water Depth (cm): 30 Depth of Organics (cm): \_\_\_\_\_

Soil: A \_\_\_\_\_ Depth to Mottles (cm): \_\_\_\_\_ Gley (cm): \_\_\_\_\_

B \_\_\_\_\_ Depth to Mottles (cm): \_\_\_\_\_ Gley (cm): \_\_\_\_\_

Presence of Seepage:  Presence of Iron Precipitates:

Forms % (Circle those ≥25%) Species (dominant species<sup>1</sup>, secondary species<sup>2</sup>, present species<sup>3</sup>)

(h) Acer x francanii, Fraxinus pennsylvanica

c \_\_\_\_\_

dc, dh, ds \_\_\_\_\_

ts \_\_\_\_\_

ls \_\_\_\_\_

gc \_\_\_\_\_

ne \_\_\_\_\_

be \_\_\_\_\_

re \_\_\_\_\_

ff \_\_\_\_\_

f \_\_\_\_\_

su \_\_\_\_\_

m \_\_\_\_\_

Rare Species (Local, Regional, Provincial): \_\_\_\_\_ Wildlife Notes: \_\_\_\_\_

\_\_\_\_\_

\_\_\_\_\_

\_\_\_\_\_

\_\_\_\_\_

Site: KINGSTON, ON

Observer (s): S. MOHAMED

Date: OCT. 2011

Field No: 23 Wetland Type: TS Site Type: \_\_\_\_\_ Dominant Form: h

% Open Water: \_\_\_\_\_ Water Depth (cm): \_\_\_\_\_ Depth of Organics (cm): \_\_\_\_\_

Soil: A \_\_\_\_\_ Depth to Mottles (cm): \_\_\_\_\_ Gley (cm): \_\_\_\_\_

B \_\_\_\_\_ Depth to Mottles (cm): \_\_\_\_\_ Gley (cm): \_\_\_\_\_

Presence of Seepage:

Presence of Iron Precipitates:

Forms % (Circle those ≥25%) Species (dominant species<sup>1</sup>, secondary species<sup>2</sup>, present species<sup>3</sup>)

h Fraxinus pennsylvanica, Ulmus americana, Fraxinus nigra

c Tilia occidentalis

dc, dh, ds \_\_\_\_\_

ts Cornus stolonifera

ls Spiraea alba

gc \_\_\_\_\_

ne Carex crinita, Carex lupulina, Poa palustris

be \_\_\_\_\_

re \_\_\_\_\_

ff \_\_\_\_\_

f \_\_\_\_\_

su \_\_\_\_\_

m \_\_\_\_\_

Rare Species (Local, Regional, Provincial):

Wildlife Notes:

Field No: 23 Wetland Type: M Site Type: \_\_\_\_\_ Dominant Form: sc

% Open Water: 106 Water Depth (cm): \_\_\_\_\_ Depth of Organics (cm): \_\_\_\_\_

Soil: A \_\_\_\_\_ Depth to Mottles (cm): \_\_\_\_\_ Gley (cm): \_\_\_\_\_

B \_\_\_\_\_ Depth to Mottles (cm): \_\_\_\_\_ Gley (cm): \_\_\_\_\_

Presence of Seepage:  N

Presence of Iron Precipitates:  N

Forms % (Circle those ≥25%) Species (dominant species<sup>1</sup>, secondary species<sup>2</sup>, present species<sup>3</sup>)

h \_\_\_\_\_

c \_\_\_\_\_

dc, dh, ds \_\_\_\_\_

ts Cornus stolonifera

ls \_\_\_\_\_

gc \_\_\_\_\_

ne Phalaris arundinacea

be \_\_\_\_\_

h Typha latifolia

ff \_\_\_\_\_

f \_\_\_\_\_

su \_\_\_\_\_

m \_\_\_\_\_

Rare Species (Local, Regional, Provincial):

Wildlife Notes:

None observed

Site: KINGSTON, ON

Observer (s): S. MOHAMED Date: \_\_\_\_\_

Field No: 2 Wetland Type: TcMM Site Type: \_\_\_\_\_ Dominant Form: \_\_\_\_\_

% Open Water: 5% Water Depth (cm): 40 Depth of Organics (cm): \_\_\_\_\_

Soil: A \_\_\_\_\_ Depth to Mottles (cm): \_\_\_\_\_ Gley (cm): \_\_\_\_\_

B \_\_\_\_\_ Depth to Mottles (cm): \_\_\_\_\_ Gley (cm): \_\_\_\_\_

Presence of Seepage:  N Presence of Iron Precipitates:  N

Forms % (Circle those ≥25%) Species (dominant species<sup>1</sup>, secondary species<sup>2</sup>, present species<sup>3</sup>)

h Larix laricina

c \_\_\_\_\_

dc, dh, ds \_\_\_\_\_

ts Salix petiolaris, Cornus stolonifera

is Spiraea alba

gc \_\_\_\_\_

ne Carex sp, Phalaris arundinacea

be \_\_\_\_\_

re Typha latifolia

ff \_\_\_\_\_

f \_\_\_\_\_

su \_\_\_\_\_

m \_\_\_\_\_

Rare Species (Local, Regional, Provincial):

Wildlife Notes:

Field No: 4 Wetland Type: \_\_\_\_\_ Site Type: \_\_\_\_\_ Dominant Form: \_\_\_\_\_

% Open Water: \_\_\_\_\_ Water Depth (cm): \_\_\_\_\_ Depth of Organics (cm): \_\_\_\_\_

Soil: A \_\_\_\_\_ Depth to Mottles (cm): \_\_\_\_\_ Gley (cm): \_\_\_\_\_

B \_\_\_\_\_ Depth to Mottles (cm): \_\_\_\_\_ Gley (cm): \_\_\_\_\_

Presence of Seepage:  Presence of Iron Precipitates:

Forms % (Circle those ≥25%) Species (dominant species<sup>1</sup>, secondary species<sup>2</sup>, present species<sup>3</sup>)

h \_\_\_\_\_

c \_\_\_\_\_

dc, dh, ds \_\_\_\_\_

ts \_\_\_\_\_

is \_\_\_\_\_

gc \_\_\_\_\_

ne Carex tribuloides, Juncus effusus, Scirpus arvensis

be \_\_\_\_\_

re \_\_\_\_\_

ff \_\_\_\_\_

f \_\_\_\_\_

su \_\_\_\_\_

m \_\_\_\_\_

Rare Species (Local, Regional, Provincial):

Wildlife Notes:

*delude?*



Site: KINGSTON, ON

Observer (s): S. MOHAMED

Date:

Field No: GA <sup>WF-01</sup> Wetland Type: \_\_\_\_\_ Site Type: \_\_\_\_\_ Dominant Form: \_\_\_\_\_  
 % Open Water: \_\_\_\_\_ Water Depth (cm): \_\_\_\_\_ Depth of Organics (cm): \_\_\_\_\_  
 Soil: A \_\_\_\_\_ Depth to Mottles (cm): \_\_\_\_\_ Gley (cm): \_\_\_\_\_  
 B \_\_\_\_\_ Depth to Mottles (cm): \_\_\_\_\_ Gley (cm): \_\_\_\_\_  
 Presence of Seepage:  Presence of Iron Precipitates:   
 Forms % (Circle those ≥25%) Species (dominant species<sup>1</sup>, secondary species<sup>2</sup>, present species<sup>3</sup>)  
 (h) Acer xfraxanum, Acer Saccharinum  
 c Thuja occidentalis  
 dc, dh, ds \_\_\_\_\_  
 ts Cornus Stolonifera, Cornus foemina lacunosa  
 ls \_\_\_\_\_  
 gc \_\_\_\_\_  
 ne Carex - Sp, Carex lupulina  
 be \_\_\_\_\_  
 re \_\_\_\_\_  
 ff \_\_\_\_\_  
 f \_\_\_\_\_  
 su \_\_\_\_\_  
 m \_\_\_\_\_

Rare Species (Local, Regional, Provincial):

Wildlife Notes:

Field No: GA <sup>WF-02</sup> Wetland Type: \_\_\_\_\_ Site Type: \_\_\_\_\_ Dominant Form: \_\_\_\_\_  
 % Open Water: \_\_\_\_\_ Water Depth (cm): \_\_\_\_\_ Depth of Organics (cm): \_\_\_\_\_  
 Soil: A \_\_\_\_\_ Depth to Mottles (cm): \_\_\_\_\_ Gley (cm): \_\_\_\_\_  
 B \_\_\_\_\_ Depth to Mottles (cm): \_\_\_\_\_ Gley (cm): \_\_\_\_\_  
 Presence of Seepage:  Presence of Iron Precipitates:   
 Forms % (Circle those ≥25%) Species (dominant species<sup>1</sup>, secondary species<sup>2</sup>, present species<sup>3</sup>)  
 h Fraxinus pennsylvanica  
 c Thuja occidentalis  
 dc, dh, ds \_\_\_\_\_  
 ts Cornus Stolonifera  
 ls \_\_\_\_\_  
 gc \_\_\_\_\_  
 ne Carex Sp  
 be \_\_\_\_\_  
 re \_\_\_\_\_  
 ff \_\_\_\_\_  
 f \_\_\_\_\_  
 su \_\_\_\_\_  
 m \_\_\_\_\_

Rare Species (Local, Regional, Provincial):

Wildlife Notes:



Site: Kingston ON,

Observer (s): Said Mohamed Date: Nov 02/01

LOOK ETC Data Sheet 01

Field No: 7 Wetland Type: M Site Type: \_\_\_\_\_ Dominant Form: vine  
 % Open Water: 10% Water Depth (cm): 8 cm Depth of Organics (cm): 5 cm  
 Soil: A Sandy loam Depth to Mottles (cm): 15 Gley (cm): \_\_\_\_\_  
 B loamy ver. coarse + coarse Depth to Mottles (cm): 5 cm Gley (cm): \_\_\_\_\_  
 Presence of Seepage:  N/A Presence of Iron Precipitates:  N/A  
 Forms % (Circle those ≥25%) Species (dominant species<sup>1</sup>, secondary species<sup>2</sup>, present species<sup>3</sup>)  
 h (in) PRAPENN. UKMAMER. (Sample) ACEX 47C  
 c \_\_\_\_\_  
 dc, dh, ds \_\_\_\_\_  
 ts \_\_\_\_\_  
 ls Spirea alba, WTSTO  
 gc Poa piza, moss  
 ne Carex lupulina, Carex vulpina, Carex bebbii  
 be Typha latifolia  
 re \_\_\_\_\_  
 ff \_\_\_\_\_  
 f \_\_\_\_\_  
 su \_\_\_\_\_  
 m \_\_\_\_\_

Rare Species (Local, Regional, Provincial):

None observed

Wildlife Notes:

AMCO - vocalized  
BOCH - OB and vocalized  
Eastern Squirrel observed

Field No: \_\_\_\_\_ Wetland Type: \_\_\_\_\_ Site Type: \_\_\_\_\_ Dominant Form: \_\_\_\_\_  
 % Open Water: \_\_\_\_\_ Water Depth (cm): \_\_\_\_\_ Depth of Organics (cm): \_\_\_\_\_  
 Soil: A \_\_\_\_\_ Depth to Mottles (cm): \_\_\_\_\_ Gley (cm): \_\_\_\_\_  
 B \_\_\_\_\_ Depth to Mottles (cm): \_\_\_\_\_ Gley (cm): \_\_\_\_\_  
 Presence of Seepage:  Presence of Iron Precipitates:   
 Forms % (Circle those ≥25%) Species (dominant species<sup>1</sup>, secondary species<sup>2</sup>, present species<sup>3</sup>)  
 h \_\_\_\_\_  
 c \_\_\_\_\_  
 dc, dh, ds \_\_\_\_\_  
 ts \_\_\_\_\_  
 ls \_\_\_\_\_  
 gc \_\_\_\_\_  
 ne \_\_\_\_\_  
 be \_\_\_\_\_  
 re \_\_\_\_\_  
 ff \_\_\_\_\_  
 f \_\_\_\_\_  
 su \_\_\_\_\_  
 m \_\_\_\_\_

Rare Species (Local, Regional, Provincial):

Wildlife Notes:

## **APPENDIX J**

### **FIVE YEAR HISTORIES OF AGRICULTURAL FIELDS IN THE PROJECT LOCATION**





**Five Year Histories of Agricultural Lands in the Project Location**

<b>Landowner</b>	<b>Parcel #</b>	<b>Total Acres</b>	<b>Approx. Usable Acres</b>	<b>Current Land Use</b>	<b>Land Use 5 Years Ago</b>
Barbara Margaret Taylor	1	30.36	15.0	Hayfield	Hayfield
Brian Wilson	2	122.67	20.0	Hayfield	Hayfield
Wilbert Glenn Clarke	3	54.12	40.0	Not in use	Not in use
Brenda Ann Vrooman	4	109.01	35.0	Pasture land	Pasture land
Wanda Babcock	5	40.95	40.0	Hayfield	Hayfield
Gary Howard Somerville	6a	107.05	70.0	Hayfield	Hayfield
Gary Howard Somerville	6b	163.63		Hayfield	Hayfield
Joseph Stasko	7	241.52	25.0	Hayfield	Hayfield
John Philip Rives	9	25.01	10.0	Sod farm	Sod farm
Mark Brooks & Anne Routhier	10	25.21	10.0	Sod farm	Sod farm
Gary Howard Somerville	11a	27.02	50.0	Sod farm and hayfields	Sod farm and hayfields
Gary Howard Somerville	11b	25.63		Sod farm and hayfields	Sod farm and hayfields
Julie Grimwood	12	138.02	45.0	Hayfield	Hayfield
Antoni Joseph Abreu & Donna Patricia Abreu	13	88.18	5.0	Pasture land	Pasture land
Barbara Margaret & John Alan & Sandra Jane Taylor	14a	145.60	175.0	Sod farm and hayfields	Sod farm and hayfields
Barbara Margaret & John Alan & Sandra Jane Taylor	14b	146.72		Sod farm and hayfields	Sod farm and hayfields
Barbara Margaret & John Alan & Sandra Jane Taylor	14c	24.41		Sod farm and hayfields	Sod farm and hayfields
Jewell Margaret & Ronald Merilees Cameron	15	24.66	15.0	Pasture land	Pasture land
Leonard Rose	16	49.27	20.0	Pasture land	Pasture land



<b>Landowner</b>	<b>Parcel #</b>	<b>Total Acres</b>	<b>Approx. Usable Acres</b>	<b>Current Land Use</b>	<b>Land Use 5 Years Ago</b>
Dale Williams	17	89.72	26.5	Pasture land	Pasture land
Robert David Neil Chapman	18	50.01	10.0	Pasture land	Pasture land
Donald Paul & Elizabeth Chapman	19	89.85	30.0	Hayfields	Hayfields
Gloria McCrimmon	20	51.71	22.0	Hayfields	Hayfields
William & Christina Laird	21	72.56	40.0	Not in use	Not in use
Fred W Vrooman	22	50.44	30.0	Not in use	Not in use
Robert A. Martin	23	66.26	40.0	Hayfields	Hayfields
Ronald Dale & Helen Margaret Boyce	24	73.43	5.0	Not in use	Not in use

## **APPENDIX K**

### **PLANT LIST**



### Plant List

Common Name	Latin Name	Coefficient of Conservatism	Wetness Index	Weediness Index	Provincial SRANK	COSEWIC Status	OMNR Status	Global GRANK	National NRANK	Ontario General Status
<b>Flowering Herbaceous</b>										
Agrimony Hooked	<i>Agrimonia gryposepala</i>	2	2	-	S5	-	-	G5	N?	SECURE
Yarrow Common	<i>Achillea millefolium var. millefolium</i>	-	3	-1	SNA	-	-	G5T5?	NE	EXOTIC
Snakeroot White	<i>Ageratina altissima var. altissima</i>	5	3	-	S5	-	-	G5T5	N?	SECURE
Garlic Mustard	<i>Alliaria petiolata (A. officinalis)</i>	-	0	-3	SNA	-	-	GNR	NE	EXOTIC
Pigweed sp.	<i>Amaranthus sp.</i>	-	-	-	-	-	-	-	-	-
Ragweed Annual	<i>Ambrosia artemisiifolia</i>	0	3	-	S5	-	-	G5	N?	SECURE
Hog- Peanut American	<i>Amphicarpaea bracteata</i>	4	0	-	S5	-	-	G5	N?	SECURE
Anemone Canada	<i>Anemone canadensis</i>	4	-3	-	S5	-	-	G5	N?	SECURE
Thimbleweed	<i>Anemone virginiana var. virginiana</i>	4	5	-	S5	-	-	G5	N?	SECURE
Sarspirilla Wild	<i>Aralia nudicaulis</i>	4	3	-	S5	-	-	G5	N?	SECURE
Burdock Common	<i>Arctium minus ssp. minus</i>	-	-	-	SNA	-	-	GNRTNR	N?	EXOTIC
Wild-ginger Canada	<i>Asarum canadensis</i>	6	5	-	S5	-	-	G5	N5	SECURE
Milkweed Common	<i>Asclepias syriaca</i>	0	5	-	S5	-	-	G5	N?	SECURE
Milkvetch Canadian	<i>Astragalus canadensis</i>	8	-1	-	S4	-	-	G5	N?	SECURE
Beggarticks Nodding	<i>Bidens cernua</i>	2	-5	-	S5	-	-	G5	N?	SECURE
Beggarticks Swamp	<i>Bidens discoidea</i>	6	-3	-	S4	-	-	G5	N3N4	SECURE
Beggarticks Devil's	<i>Bidens frondosa</i>	3	-3	-	S5	-	-	G5	N?	SECURE
Beggarticks sp.	<i>Bidens sp.</i>	-	-	-	-	-	-	-	-	-
Mustard sp.	<i>Brassica sp.</i>	-	-	-	-	-	-	-	-	-
Knapweed Spotted	<i>Centaurea biebersteinii</i>	-	5	-	SNA	-	-	GNR	NE	EXOTIC
Knapweed Brown	<i>Centaurea jacea</i>	-	5	-	SNA	-	-	GNR	NE	EXOTIC
Chicory	<i>Cichorium intybus</i>	-	5	-1	SNA	-	-	GNR	NE	EXOTIC
Enchanter's Nightshade sp.	<i>Circaea sp.</i>	-	-	-	-	-	-	-	-	-
Thistle Canada	<i>Cirsium arvense</i>	-	3	-	SNA	-	-	GNR	NE	EXOTIC
Thistle sp.	<i>Cirsium sp.</i>	-	-	-	-	-	-	-	-	-
Thistle Bull	<i>Cirsium vulgare</i>	-	4	-1	SNA	-	-	GNR	NE	EXOTIC
Goldthread	<i>Coptis trifolia ssp. groenlandica</i>	7	-3	-	S5	-	-	G5	N?	SECURE
Wild Carrot	<i>Daucus corata</i>	-	5	-2	SNA	-	-	GNR	NE	EXOTIC



Common Name	Latin Name	Coefficient of Conservatism	Wetness Index	Weediness Index	Provincial SRANK	COSEWIC Status	OMNR Status	Global GRANK	National NRANK	Ontario General Status
Aster Flat-topped White	<i>Doellingeria umbellata</i> var. <i>umbellata</i>	6	-3	-	S5	-	-	G5T5	N?	SECURE
Viper's-bugloss Common	<i>Echium vulgare</i>	-	5	-	SNA	-	-	GNR	NE	EXOTIC
Fleabane Daisy	<i>Erigeron strigosus</i>	10	-3	-	S5	-	-	G5	N?	SECURE
Boneset Common	<i>Eupatorium perfoliatum</i>	2	-4	-	S5	-	-	G5	N5	SECURE
Aster Large-leaved	<i>Eurybia macrophyllus</i>	5	5	-	S5	-	-	G5	N?	SECURE
Goldentop Common	<i>Euthamia graminifolia</i>	2	-2	-	S5	-	-	G5	N?	SECURE
Goldenrod Grassleaved	<i>Euthamia graminifolia</i>	2	-2	-	S5	-	-	G5	N?	SECURE
Strawberry sp.	<i>Fragaria</i> sp.	-	-	-	-	-	-	-	-	-
Strawberry Wild	<i>Fragaria virginiana</i>	2	1	-	S5	-	-	G5	N?	SECURE
Bedstraw Marsh	<i>Galium palustre</i>	5	-5	-	S5	-	-	G5	N?	SECURE
Bedstraw sp.	<i>Galium</i> sp.	-	-	-	-	-	-	-	-	-
Closed Gentian	<i>Gentiana andrewsii</i>	6	-3	-	S4	-	-	G5?	N?	SECURE
Herb-robert	<i>Geranium robertianum</i>	-	5	-2	SNA	-	-	G5	N3N5	EXOTIC
Avens White	<i>Geum canadense</i>	3	0	-	S5	-	-	G5	N?	SECURE
Avens sp.	<i>Geum</i> sp.	-	-	-	-	-	-	-	-	-
Hepatica Round-lobed	<i>Hepatica nobilis</i> var. <i>obtusata</i>	6	5	-	S5	-	-	G5T5	-	SECURE
Cow-parsnip	<i>Heracleum maximum</i>	3	-3	-	S5	-	-	G5	N?	SECURE
St. Johnswort Common	<i>Hypericum perforatum</i>	-	5	-3	SNA	-	-	GNR	NE	EXOTIC
Elecampane	<i>Inula helenium</i>	-	5	-2	SNA	-	-	GNR	NE	EXOTIC
Iris Blueflag	<i>Iris versicolor</i>	5	-5	-	S5	-	-	G5	N5	SECURE
Mint sp.	<i>Lamiaceae</i> sp.	-	-	-	-	-	-	-	-	-
Birds-foot Trefoil	<i>Lotus corniculatus</i>	-	1	-2	SNA	-	-	GNR	NE	EXOTIC
Loosestrife Purple	<i>Lythrum salicaria</i>	-	-5	-3	SNA	-	-	G5	NE	EXOTIC
Solomen's Seal Starry False	<i>Maianthemum stellatum</i>	6	1	-	S5	-	-	G5	N?	SECURE
Black Medic	<i>Medicago lupulina</i>	-	1	-1	SNA	-	-	GNR	NE	EXOTIC
Alfalfa	<i>Medicago sativa</i> ssp. <i>sativa</i>	-	5	-1	SE5	-	-	G?T?	NE	EXOTIC
Sweet- clover White	<i>Melilotus alba</i>	-	3	-3	SNA	-	-	G5	NE	EXOTIC
Sweet- clover Yellow	<i>Melilotus officinalis</i>	-	3	-	SNA	-	-	GNR	NE	EXOTIC
Indian-pipe	<i>Monotropa uniflora</i>	6	3	-	S5	-	-	G5	N5	SECURE
Catnip	<i>Nepeta cataria</i>	-	1	-	SNA	-	-	GNR	NE	EXOTIC
Evening- primrose Common	<i>Oenothera biennis</i>	0	3	-	S5	-	-	G5	N?	SECURE

Common Name	Latin Name	Coefficient of Conservatism	Wetness Index	Weediness Index	Provincial SRANK	COSEWIC Status	OMNR Status	Global GRANK	National NRANK	Ontario General Status
Wood Sorrel sp.	<i>Oxalis sp.</i>	-	-	-	-	-	-	-	-	-
Plantain Common	<i>Plantago major</i>	-	-1	-1	SNA	-	-	G5	NE	EXOTIC
Solomen's Seal Hairy	<i>Polygonatum pubescens</i>	5	5	-	S5	-	-	G5	-	-
Lady's- thumb	<i>Polygonum persicaria</i>	-	-3	-1	SNA	-	-	G3G5	NE	EXOTIC
Smartweed sp.	<i>Polygonum sp.</i>	-	-	-	-	-	-	-	-	-
Cinquefoil Rough-Fruited	<i>Potentilla recta</i>	-	5	-2	SNA	-	-	GNR	NE	EXOTIC
Cinquefoil sp.	<i>Potentilla sp.</i>	-	-	-	-	-	-	-	-	-
Self-heal	<i>Prunella vulgaris ssp. Lanceolata</i>	5	5	-	S5	-	-	G5T5	N?	SECURE
Buttercup Tall	<i>Ranunculus acris</i>	-	-2	-	SNA	-	-	G5	NE	EXOTIC
Buttercup sp.	<i>Ranunculus sp.</i>	-	-	-	-	-	-	-	-	-
Blackberry Allegheny	<i>Rubus allegheniensis</i>	2	2	-	S5	-	-	G5	N5	SECURE
Dock Curly	<i>Rumex crispus</i>	-	-1	-2	SNA	-	-	GNR	NE	EXOTIC
Snakeroot Black	<i>Sanicula marilandica</i>	5	3	-	S5	-	-	G5	N?	SECURE
Early Saxifrage	<i>Saxifraga virginiana</i>	6	1	-	S5	-	-	G5	N?	SECURE
Stonecrop Mossy	<i>Sedum acre</i>	-	5	-	SNA	-	-	GNR	NE	EXOTIC
Stonecrop sp.	<i>Sedum sp.</i>	-	-	-	-	-	-	-	-	-
Goldenrod Canada	<i>Solidago canadensis var. canadensis</i>	-	-	-	S5	-	-	G5T5	N?	SECURE
Goldenrod Zig-zag	<i>Solidago flexicaulis</i>	6	3	-	S5	-	-	G5	N?	SECURE
Goldenrod Smooth	<i>Solidago gigantea</i>	4	-3	-	S5	-	-	G5	N?	SECURE
Goldenrod Early	<i>Solidago juncea</i>	3	5	-	S5	-	-	G5	N?	SECURE
Aster Upland White	<i>Solidago ptarmicoides</i>	9	5	-	S5	-	-	G5	N?	SECURE
Goldenrod Rough-leaf	<i>Solidago rugosa ssp. rugosa</i>	4	-1	-	S5	-	-	G5	N5	SECURE
Goldenrod sp.	<i>Solidago sp.</i>	-	-	-	-	-	-	-	-	-
Nettle Hedge	<i>Stachys pilosa</i>	8	-4	-	SU	-	-	G5	N?	MAY BE AT RISK
Nettle Smooth Hedge	<i>Stachys tenuifolia</i>	7	-4	-	S4S5	-	-	G5T4Q	-	SECURE
Pencil Flower	<i>Stylosanthes biflora</i>	-	-	-	-	-	-	-	-	-
Aster Heart-leaf	<i>Symphotrichum cordifolium</i>	5	5	-	S5	-	-	G5	N5	SECURE
Aster Heath	<i>Symphotrichum ericoides var. ericoides</i>	-	-	-	S5	-	-	G5T5	N?	SECURE
Aster Panicked	<i>Symphotrichum lanceolatum ssp. lanceolatum</i>	-	-	-	S5	-	-	G5T5	N?	SECURE

Common Name	Latin Name	Coefficient of Conservatism	Wetness Index	Weediness Index	Provincial SRANK	COSEWIC Status	OMNR Status	Global GRANK	National NRANK	Ontario General Status
Aster Calico	<i>Symphyotrichum lateriflorus var. hirsuticaulis</i>	3	-2	-	S4?	-	-	G5T4T5	N?	SECURE
Aster New England	<i>Symphyotrichum novae-angliae</i>	2	-3	-	S5	-	-	G5	N?	SECURE
Aster sp.	<i>Symphyotrichum sp.</i>	-	-	-	-	-	-	-	-	-
Dandelion sp.	<i>Taraxacum sp.</i>	-	-	-	-	-	-	-	-	-
Meadowrue sp.	<i>Thalictrum sp.</i>	-	-	-	-	-	-	-	-	-
Poison Ivy	<i>Toxicodendron radicans ssp. Negundo</i>	5	-1	-	S5	-	-	G5T5	N?	SECURE
Goat's Beard Meadow	<i>Tragopogon dubius</i>	-	5	-	SNA	-	-	GNR	NE	EXOTIC
Star-flower	<i>Trientalis borealis ssp. borealis</i>	6	-1	-	S5	-	-	G5	N?	SECURE
Clover Red	<i>Trifolium pratense</i>	-	2	-2	SNA	-	-	GNR	NE	EXOTIC
Nettle American Stinging	<i>Urtica dioica ssp. Gracilis</i>	2	-1	-	S5	-	-	G5T5	N?	SECURE
Mullein Great	<i>Verbascum thapsus</i>	-	5	-2	SNA	-	-	GNR	NE	EXOTIC
Vervain sp.	<i>Verbena sp.</i>	-	-	-	-	-	-	-	-	-
Speedwell	<i>Veronica catenata</i>	7	-5	-	S4	-	-	G5	-	SECURE
Vetch Cow	<i>Vicia cracca</i>	-	5	-1	SNA	-	-	GNR	NE	EXOTIC
Vetch Spring	<i>Vicia sativa</i>	-	4	-	SNA	-	-	GNR	NE	EXOTIC
Violet sp.	<i>Viola sp.</i>	-	-	-	-	-	-	-	-	-
Hawkweed sp.	<i>Hieracium sp.</i>	-	-	-	-	-	-	-	-	-
<b>Mosses/Lichens</b>										
Lichen spp.	<i>Lichen spp.</i>	-	-	-	-	-	-	-	-	-
Moss Club sp.	<i>Lycopodium sp.</i>	-	-	-	-	-	-	-	-	-
Moss Feather sp.	<i>Hylocomium sp.</i>	-	-	-	-	-	-	-	-	-
Moss spp.		-	-	-	-	-	-	-	-	-
<b>Grasses/Sedges/Rushes</b>										
Grass Redtop	<i>Agrostis stolonifera</i>	0	-3	-	S5	-	-	G5	N?	SECURE
Brome-grass Smooth	<i>Bromus inermis ssp. inermis</i>	-	5	-3	SNA	-	-	G5TNR	NE	EXOTIC
Sedge Bebb's	<i>Carex bebbii</i>	3	-5	-	S5	-	-	G5	N?	SECURE
Sedge sp.	<i>Carex sp.</i>	-	-	-	-	-	-	-	-	-
Sedge Tussock	<i>Carex stricta</i>	4	-5	-	S5	-	-	G5	N?	SECURE
Sedge Fox	<i>Carex vulpinoidea</i>	3	-5	-	S5	-	-	G5	N?	SECURE
Grass Orchard	<i>Dactylis glomerata</i>	-	3	-1	SNA	-	-	GNR	NE	EXOTIC

Common Name	Latin Name	Coefficient of Conservatism	Wetness Index	Weediness Index	Provincial SRANK	COSEWIC Status	OMNR Status	Global GRANK	National NRANK	Ontario General Status
Grass Poverty Oat	<i>Danthonia spicata</i>	5	5	-	S5	-	-	G5	N?	SECURE
Grass Quack	<i>Elymus repens</i>	-	3	-3	SNA	-	-	GNR	NE	EXOTIC
Rush Canada	<i>Juncus canadensis</i>	6	-5	-	S5	-	-	G5	N?	SECURE
Rye Grass sp.	<i>Lolium sp.</i>	-	-	-	-	-	-	-	-	-
Grass Witch Panic	<i>Panicum capillare</i>	0	0	-	S5	-	-	G5	N?	SECURE
Grass Reed-canary	<i>Phalaris arundinacea</i>	0	-4	-	S5	-	-	G5	N?	SECURE
Timothy	<i>Phleum pratense</i>	-	3	-1	SNA	-	-	GNR	NE	EXOTIC
Bluegrass Canada	<i>Poa compressa</i>	0	2	-	SNA	-	-	GNR	NE	SECURE
Bluegrass Fowl	<i>Poa palustris</i>	5	-4	-	S5	-	-	G5	N?	SECURE
Bluegrass Kentucky	<i>Poa pratensis spp. pratensis</i>	0	2	-	S5	-	-	G5T5	N?	SECURE
Bulrush Dark-green	<i>Scirpus atrovirens</i>	3	-5	-	S5	-	-	G5?	N?	SECURE
Wool-grass	<i>Scirpus cyperinus</i>	4	-5	-	S5	-	-	G5	N?	SECURE
Bulrush sp.	<i>Scirpus sp.</i>	-	-	-	-	-	-	-	-	-
Cattail	<i>Typha latifolia</i>	3	-5	-	S5	-	-	G5	N?	SECURE
Grass spp.		-	-	-	-	-	-	-	-	-
<b>Ferns and Allies</b>										
Fern Spinulus Wood	<i>Dryopteris carthusiana</i>	5	-2	-	S5	-	-	G5	N?	SECURE
Fern Wood sp.	<i>Dryopteris sp.</i>	-	-	-	-	-	-	-	-	-
Horsetail sp.	<i>Equisitum sp.</i>	-	-	-	-	-	-	-	-	-
Fern Sensitive	<i>Onoclea sensibilis</i>	4	-3	-	S5	-	-	G5	N?	SECURE
Fern Bracken	<i>Pteridium aquilinum</i>	2	3	-2	S5	-	-	G5	N5	SECURE
<b>Vines</b>										
Dog-Strangling Vine	<i>Cynanchum rossicum</i>	-	-	-	SNA	-	-	GNR	NE	EXOTIC
Virginia Creeper	<i>Parthenocissus quinquefolia</i>	6	1	-	S4?	-	-	G5	N?	SECURE
Bittersweet Nightshade	<i>Solanum dulcamara</i>	7	-5	-	SNA	-	-	GNR	NE	EXOTIC
Grape Riverbank	<i>Vitis riparia</i>	0	-2	-	S5	-	-	G5	N?	SECURE
<b>Coniferous Trees and Shrubs</b>										
Fir Balsam	<i>Abies balsamea</i>	5	-3	-	S5	-	-	G5	N5	SECURE
Juniper Common	<i>Juniperus communis</i>	4	3	-	S5	-	-	G5	N5	SECURE
Cedar Eastern Red	<i>Juniperus virginiana</i>	4	3	-	S5	-	-	G5	N4?	SECURE
Tamarack	<i>Larix laricina</i>	7	-3	-	S5	-	-	G5	N5	SECURE

Common Name	Latin Name	Coefficient of Conservatism	Wetness Index	Weediness Index	Provincial SRANK	COSEWIC Status	OMNR Status	Global GRANK	National NRANK	Ontario General Status
Spruce White	<i>Picea glauca</i>	6	3	-	S5	-	-	G5	N5	SECURE
Pine Red	<i>Pinus resinosa</i>	8	3	-	S5	-	-	G5	N5	SECURE
Pine Eastern White	<i>Pinus strobus</i>	4	3	-	S5	-	-	G5	N?	SECURE
Cedar Eastern White	<i>Thuja occidentalis</i>	4	-3	-	S5	-	-	G5	N5	SECURE
<b>Deciduous Shrubs</b>										
Alder Speckled	<i>Alnus incana ssp. rugosa</i>	6	-5	-	S5	-	-	G5	N?	SECURE
Bittersweet	<i>Celastrus scandens</i>	3	3	-	S5	-	-	G5	N5	SECURE
Dogwood Silky	<i>Cornus amomum ssp. obliqua</i>	5	-4	-	S5	-	-	G5T5	N?	SECURE
Dogwood Grey	<i>Cornus foemina ssp. racemosa</i>	2	-2	-	S5	-	-	G5	N5	SECURE
Dogwood Red-osier	<i>Cornus sericea</i>	5	-4	-	S5	-	-	G5	-	SECURE
Hawthorn sp.	<i>Crataegus sp.</i>	-	-	-	-	-	-	-	-	-
Winterberry	<i>Ilex verticillata</i>	5	-4	-	S5	-	-	G5	N?	SECURE
Honeysuckle Tartarian	<i>Lonicera tatarica</i>	-	3	-3	SNA	-	-	GNR	NE	EXOTIC
Plum Canada	<i>Prunus nigra</i>	4	4	-	S4	-	-	G4G5	N4N5	SECURE
Cherry Choke	<i>Prunus virginiana ssp. Virginiana</i>	2	1	-	S5	-	-	G5	N?	SECURE
Buckthorn Common	<i>Rhamnus cathartica</i>	-	3	-3	SNA	-	-	GNR	NE	EXOTIC
Sumac Staghorn	<i>Rhus typhina</i>	1	5	-	S5	-	-	G5	N?	SECURE
Currant Wild Black	<i>Ribes americanum</i>	4	-3	-	S5	-	-	G5	N5	SECURE
Gooseberry Prickly	<i>Ribes cynosbati</i>	4	5	-	S5	-	-	G5	N?	SECURE
Currant sp.	<i>Ribes sp.</i>	-	-	-	-	-	-	-	-	-
Gooseberry sp.	<i>Ribes sp.</i>	-	-	-	-	-	-	-	-	-
Rose sp.	<i>Rosa sp.</i>	-	-	-	-	-	-	-	-	-
Blackberry Allegheny	<i>Rubus allegheniensis</i>	2	2	-	S5	-	-	G5	N5	SECURE
Raspberry Common Red	<i>Rubus idaeus ssp. Idaeus</i>	-	-	-	SE1	-	-	G5T5	N?	EXOTIC
Raspberry Black	<i>Rubus occidentalis</i>	2	5	-	S5	-	-	G5	N?	SECURE
Raspberry sp.	<i>Rubus sp.</i>	-	-	-	-	-	-	-	-	-
Elderberry sp.	<i>Sambucus sp.</i>	-	-	-	-	-	-	-	-	-
Narrow-leaved Meadow-sweet	<i>Spiraea alba</i>	3	-4	-	S5	-	-	G5	N?	SECURE
Lilac Common	<i>Syringa vulgaris</i>	-	5	-2	SNA	-	-	GNR	NE	EXOTIC
Viburnum Maple-leaved	<i>Viburnum acerifolium</i>	6	5	-	S5	-	-	G5	N?	SECURE
Wild- raisin Northern	<i>Viburnum cassinoides</i>	7	3	-	S5	-	-	G5T5	-	SECURE

Common Name	Latin Name	Coefficient of Conservatism	Wetness Index	Weediness Index	Provincial SRANK	COSEWIC Status	OMNR Status	Global GRANK	National NRANK	Ontario General Status
Arrow-wood Downy	<i>Viburnum rafinesquianum</i>	7	5	-	S5	-	-	G5	N?	SECURE
Prickly- ash Northern	<i>Zanthoxylum americanum</i>	3	5	-	S5	-	-	G5	N?	SECURE
Viburnum sp.	-	-	-	-	-	-	-	-	-	-
<b>Deciduous Trees</b>										
Maple Manitoba	<i>Acer negundo</i>	0	-2	-	S5	-	-	G5	N?	SECURE
Maple Red	<i>Acer rubrum</i>	4	0	-	S5	-	-	G5	N?	SECURE
Maple Sugar	<i>Acer saccharum var. saccharum</i>	4	3	-	S5	-	-	G5T5	N?	SECURE
Maple Freeman's	<i>Acer x freemanii</i>	-	-	-	SNR	-	-	GNA	HYB	UNDETERMINED
Birch White	<i>Betula papyrifera</i>	2	2	-	S5	-	-	G5	N?	SECURE
Blue-Beech	<i>Carpinus caroliniana ssp. virginiana</i>	6	0	-	S5	-	-	G5	N?	SECURE
Hickory Bitternut	<i>Carya cordiformis</i>	6	0	-	S5	-	-	G5	N?	SECURE
Hickory Shagbark	<i>Carya ovata</i>	6	3	-	S5	-	-	G5	N?	SECURE
Beech American	<i>Fagus grandifolia</i>	6	3	-	S4	-	-	G5	N?	SECURE
Ash White	<i>Fraxinus americana</i>	4	3	-	S5	-	-	G5	N?	SECURE
Ash Black	<i>Fraxinus nigra</i>	7	-4	-	S5	-	-	G5	N?	SECURE
Ash Green (Red)	<i>Fraxinus pennsylvanica</i>	3	-3	-	S5	-	-	G5	N?	SECURE
Apple sp.	<i>Malus sp.</i>	-	-	-	-	-	-	-	-	-
Ironwood	<i>Ostrya virginiana</i>	4	4	-	S5	-	-	G5	N?	SECURE
Cottonwood Plains	<i>Populus deltoides ssp. Deltoides</i>	4	-1	-	S5	-	-	G5	N?	SECURE
Aspen Large-tooth	<i>Populus grandidentata</i>	3	5	-	S5	-	-	G5	N?	SECURE
Aspen Trembling	<i>Populus tremuloides</i>	2	0	-	S5	-	-	G5	N?	SECURE
Cherry Black	<i>Prunus serotina</i>	3	3	-	S5	-	-	G5	N5	SECURE
Oak White	<i>Quercus alba</i>	6	3	-	S5	-	-	G5	N?	SECURE
Oak Bur	<i>Quercus macrocarpa</i>	5	1	-	S5	-	-	G5	N?	SECURE
Oak Northern Red	<i>Quercus rubra</i>	6	3	-	S5	-	-	G5	N?	SECURE
Willow sp.	<i>Salix sp.</i>	-	-	-	-	-	-	-	-	-
Basswood American	<i>Tilia americana</i>	4	3	-	S5	-	-	G5	N?	SECURE
Elm White	<i>Ulmus americana</i>	3	-2	-	S5	-	-	G5?	N?	SECURE

Reference: Ontario Natural Heritage Information Centre (NHIC). 2010

Total: 201, Native: 160 (80%), Exotic: 41 (20%)

**Global GRANK**

G3	Rare to Uncommon
G4	Common
G5	Very common
T#	Rank applies to a subspecies or variety (# corresponds to GRANK)
?	Inexact Numeric Range
G?	Unranked or tentatively assigned rank (if placed after a ranking)
Q	Questionable Taxonomic Status
GNR	Unranked
GNA	Not Applicable

**NHIC Provincial SRANK**

S2	Imperiled
S3	Vulnerable
S4	Apparently Secure
S5	Secure
S?	Not Ranked Yet: if follow a rank, rank uncertain
SE	Exotic
SNR	Unranked
SNA	Not Applicable

**National NRANK**

N3	Vulnerable
N4	Apparently Secure
N5	Secure
N?	Inexact Numeric Range
NE	Exotic
HYB	Hybrid