

Path: P:\EIM\Projects\2011\TC121402\Samsung Solar REAG\GIS\NHA\_Report\IMXD\_Maps\FINAL\_4\Site\_Seasonal\_Concentration\_Habitat\_4.mxd

**LEGEND**

**Significant Wildlife Seasonal Concentration Habitat (Labelled with ID)**

- SH3 Snake Hibernaculum
- WR3 Winter Raptor Area

**Proposed Development Features**

- Project Location, 120 m Setback Investigation Area \*
- Collector Line (Overhead)
- Collector Line (Underground)
- Access Road
- Substation Location
- Development Area (Solar Panels)

**NOTES:**  
 - Watercourse and Waterbody data extracted from Land Information Ontario, Ministry of Natural Resources, 2011  
 \* Investigation area includes the 120m buffer from the proposed fence line for development sites, overhead and underground collector lines and access roads (Site Plan April 20, 2012)

Datum: NAD83  
 Projection: UTM Zone 18N



**KINGSTON SOLAR LP**



**SOL-LUCE KINGSTON SOLAR PV ENERGY PROJECT**

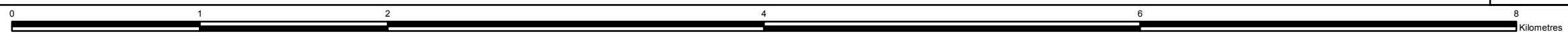
**Significant Habitat of Seasonal Concentrations of Animals**

PROJECT N<sup>o</sup>: TC121402

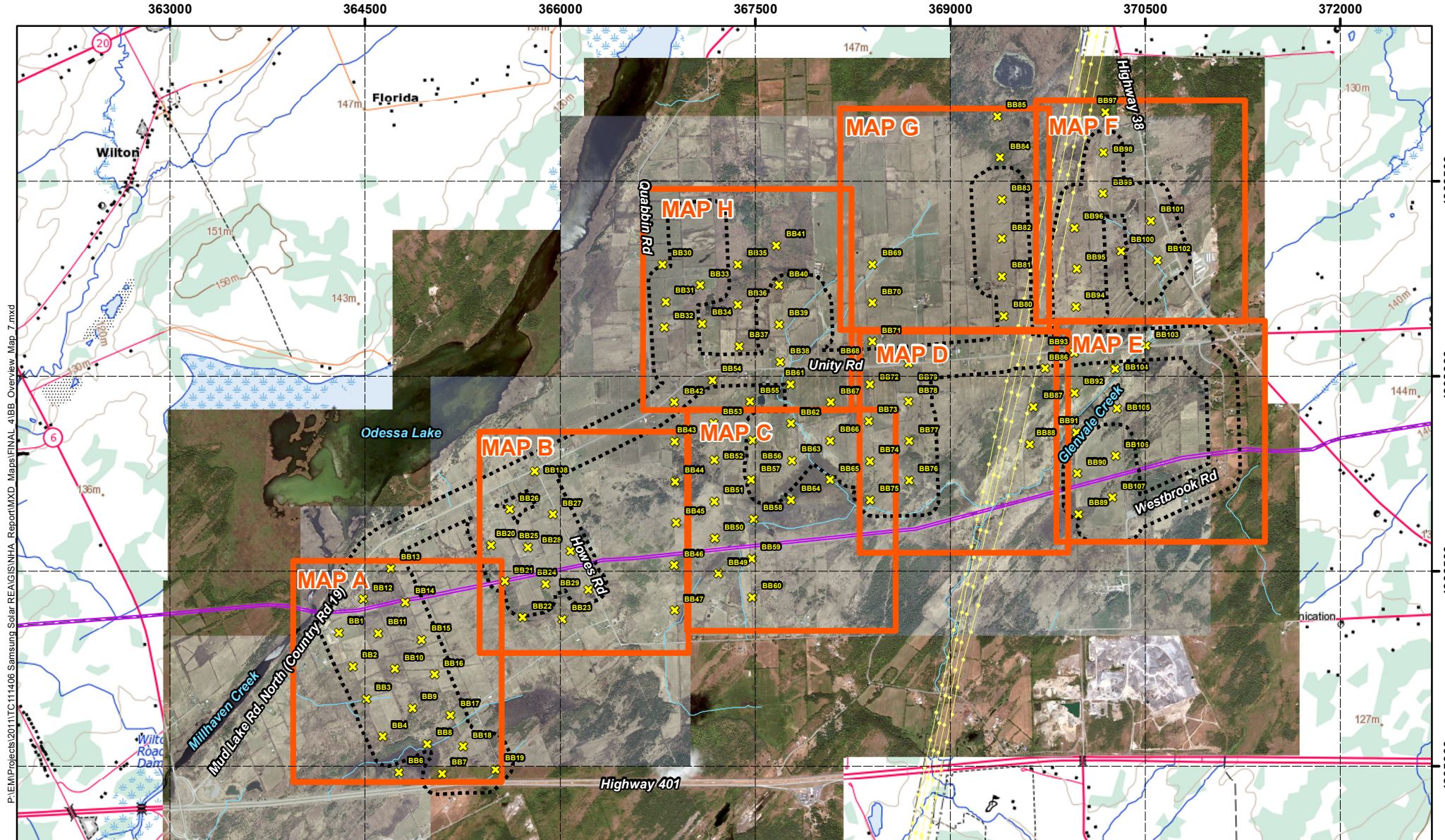
FIGURE: 4-3

SCALE: 1:27,000

DATE: June 2012







P:\EIP\Projects\2011\TC121406 Samsung Solar REAGS\NHA\_Report\MXD\_Maps\FINAL\_4\BB\_Overview\_Map\_7.mxd

**LEGEND**

- Project Location, 120 m Setback Investigation Area \*
- X Breeding Bird Station
- Large Scale Map Extent (Figures 4-4a - 4-4h)
- Transmission Lines
- TransCanada Natural Gas Pipeline ROW (Approx.)
- Municipal / County Boundary

0    0.5    1    2    3    4    5  
 Kilometres

**NOTES:**

- Background topographic DRG map extracted from Geogratis.ca, 1:50k NTS
- Breeding Bird Point Count surveys conducted in June-July 2011
- \* Investigation area includes the 120m buffer from the proposed fence line for development sites, overhead and underground collector lines and access roads (Site Plan April 20, 2012)

Datum: NAD83  
 Projection: UTM Zone 18N

**KINGSTON SOLAR LP**

**SOL-LUCE KINGSTON SOLAR PV ENERGY PROJECT**

**Breeding Bird Point Count Survey Stations Overview Map**

PROJECT N<sup>o</sup>: TC121402

SCALE: 1:41,000

FIGURE: 4-4

DATE: June 2012



