

P:\E\Projects\2011\TC121402\Samsung Solar REA\GIS\NHA_Report\Map\XD_Maps\FINAL_4\Sig_NaturalFeatures_Woodland_Wetlands_7.mxd

LEGEND

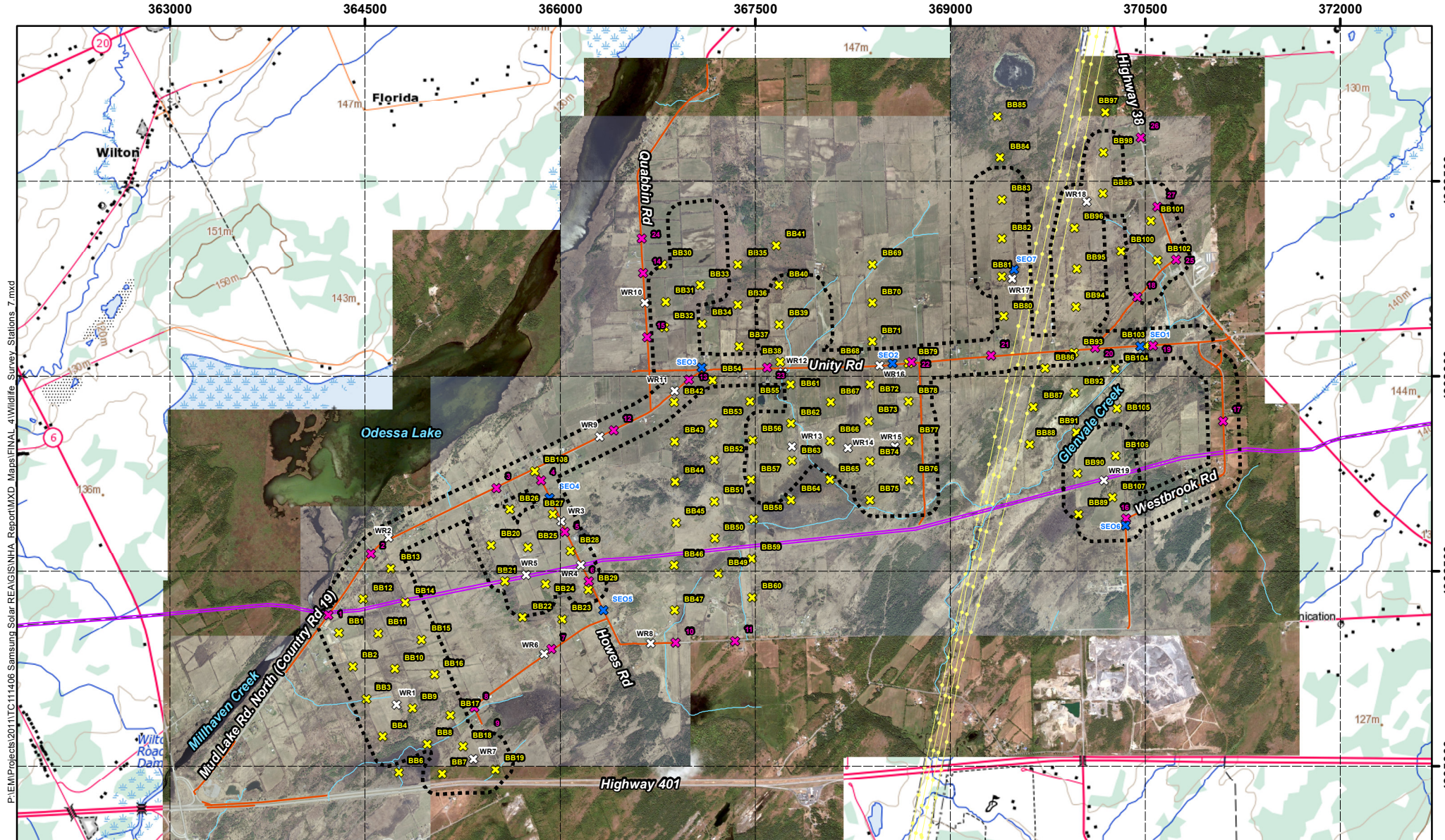
Significant Natural Features		Proposed Development Features	
	Significant Woodland Area (Labelled with ID)		Development Area (Solar Panels)
	Wetland Area Delineations (Labelled with ID)		Access Road
			Collector Line (Overhead)
			Collector Line (Underground)
			Substation Location
			Project Location, 120 m Setback Investigation Area *

0 1 2 4 6 8
Kilometres

NOTES:
 - Watercourse and Waterbody data extracted from Land Information Ontario, Ministry of Natural Resources, 2011
 * Investigation area includes the 120m buffer from the proposed fence line for development sites, overhead and underground collector lines and access roads (Site Plan April 20, 2012)

Datum: NAD83
 Projection: UTM Zone 18N

KINGSTON SOLAR LP		
SOL-LUCE KINGSTON SOLAR PV ENERGY PROJECT		
Significant Natural Features: Woodlands and Wetlands		
PROJECT N ^o : TC121402	FIGURE: 4-1	
SCALE: 1:27,000	DATE: June 2012	



P:\EIP\Projects\2011\TC121406 Samsung Solar REAGS\NHA_Report\MXD_Maps\FINAL_4\Wildlife_Survey_Station_7.mxd

LEGEND

	Crepuscular Bird / Amphibian Station		Short-eared Owl Station
	Breeding Bird Station		Winter Raptor Station
	Transmission Lines		
	Project Location, 120 m Setback Investigation Area *		
	Roads		
	TransCanada Natural Gas Pipeline ROW (Approx.)		
	Municipal / County Boundary		

0 0.5 1 2 3 4 5 Kilometres

NOTES:

- Background topographic DRG map extracted from Geogratis.ca, 1:50k NTS
- Breeding Bird Point Count surveys conducted in June-July 2011
- Fields investigated in August 2011
- Investigation area includes the 120m buffer from the proposed fence line for development sites, overhead and underground collector lines and access roads (Site Plan April 20, 2012)

Datum: NAD83
Projection: UTM Zone 18N

KINGSTON SOLAR LP 	
SOL-LUCE KINGSTON SOLAR PV ENERGY PROJECT	
Wildlife Survey Stations	
PROJECT N ^o : TC121402	FIGURE: 4-2
SCALE: 1:41,000	DATE: June 2012

