

P:\EM\Projects\2011\TC121402\Samsung Solar REA\GIS\NHA_Report\Map\XD_Maps\FINAL_4\wetland_overview_8.mxd

LEGEND

- Wetland Natural Features**
- 25 Wetland Area Delineations (Labelled with ID)
 - Wetland Area Sub-category Delineation (Labelled with Type, see below)
 - hS = Deciduous Swamp
 - M = Marsh
 - mM = Meadow Marsh
 - mS = Mixed Swamp
 - tS = Thicket Swamp
 - W = Open Water / Pond

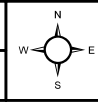
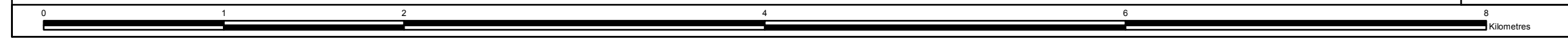
- Layout Features**
- Project Location, 120 m Setback Investigation Area *
 - Collector Line (Overhead)
 - Collector Line (Underground)
 - Access Road
 - Substation Location
 - Development Area (Solar Panels)

NOTES:
 - Watercourse and Waterbody data extracted from Land Information Ontario, Ministry of Natural Resources, 2011
 * Investigation area includes the 120m buffer from the proposed fence line for development sites, overhead and underground collector lines and access roads (Site Plan April 20, 2012)
 - For minimum distances between natural features and project components please refer to Table 3-6

KINGSTON SOLAR LP

SOL-LUCE KINGSTON SOLAR PV ENERGY PROJECT

**Natural Features:
Wetlands**



Datum: NAD83 Projection: UTM Zone 18N	PROJECT N ^o : TC121402 FIGURE: 3-4
SCALE: 1:27,000	DATE: June 2012

